

THIS MAP WAS PREPARED FOR ASSESSMENT PURPOSE ONLY

SECTION 27 T
YAMHILL

Attachment EL-1

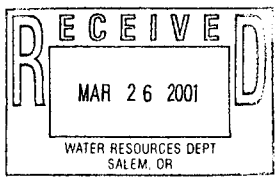
Application of Eric D. Lemelson,
DBA Comucopia Vineyards L.L.C.
To appropriate groundwater
for drip irrigation of 22 acres
of winegrapes

Willamette Basin, Yamhill City

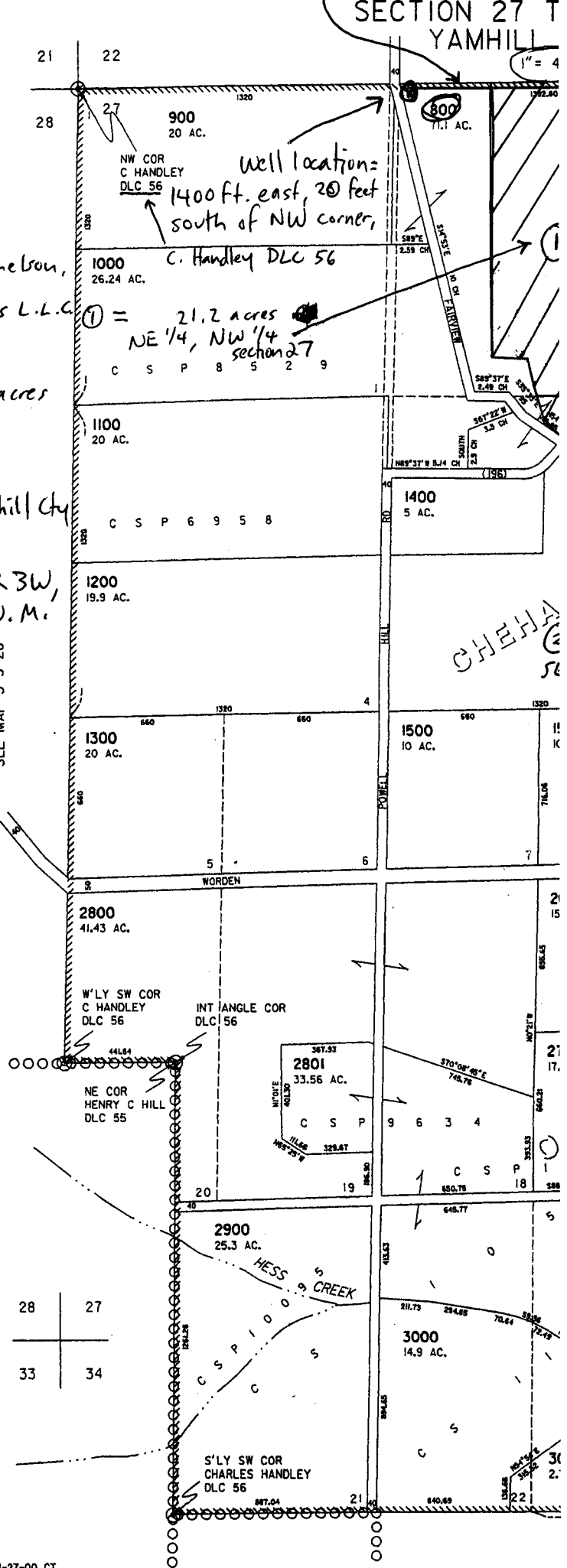
Tax Lot 800, T3S, R3W,
Section 27

Crosshatched = area ^{to be} irrigated

SEE MAP 3 3 28



Application No. 915456
Permit No.



S R3W W.M.
COUNTY

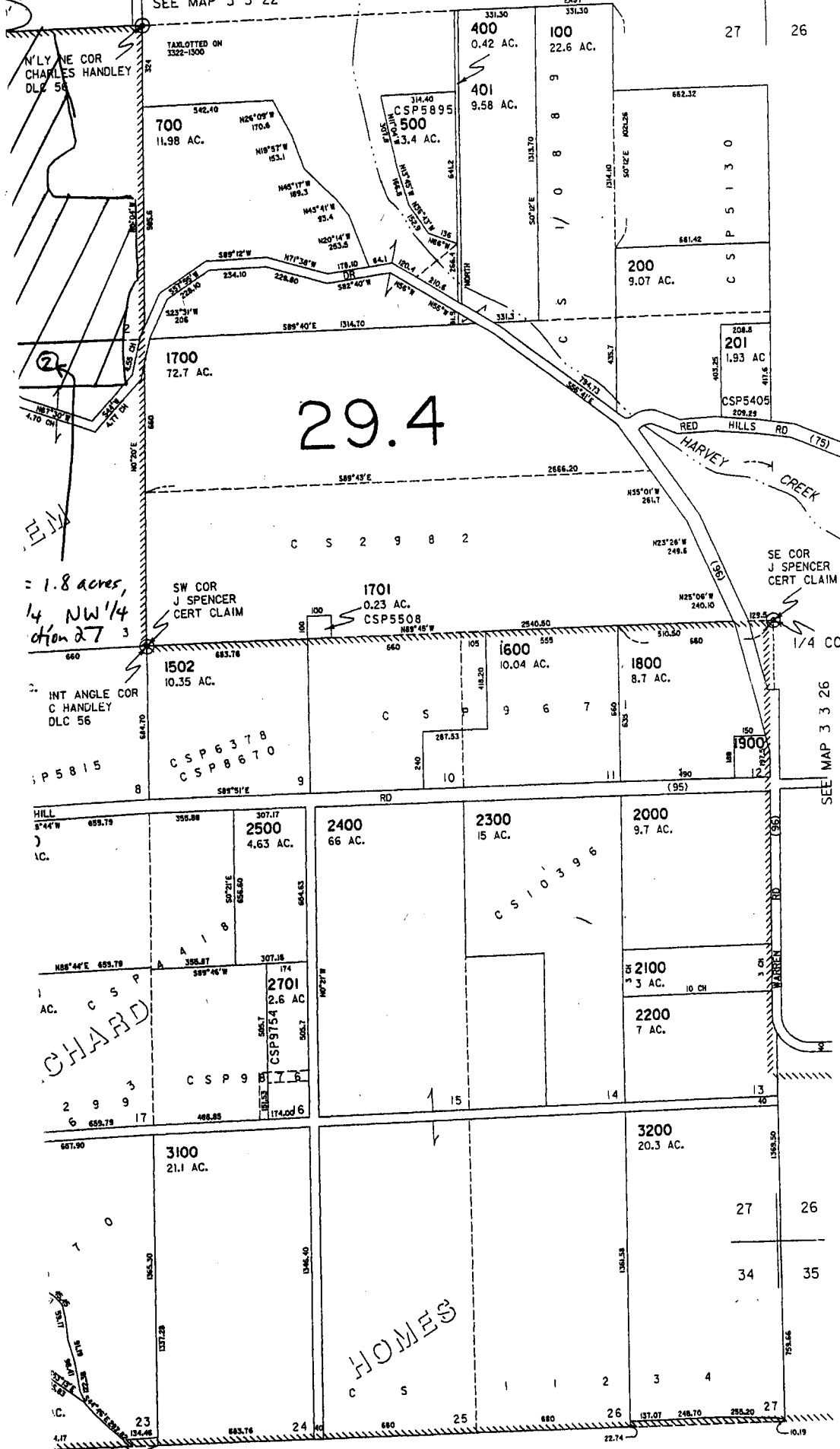
app # 6-15456
Permit # 6-15234

3 3 27

22 23
27 26

FILE COPY

CANCELLED
101
300
600 REF



= 1.8 acres,
1/4 NW 1/4
of section 27 3

CSP 6378
CSP 8670

CHARD

HOME'S

SEE MAP 3 3 34

SEE MAP 3 3 26

3 3 27