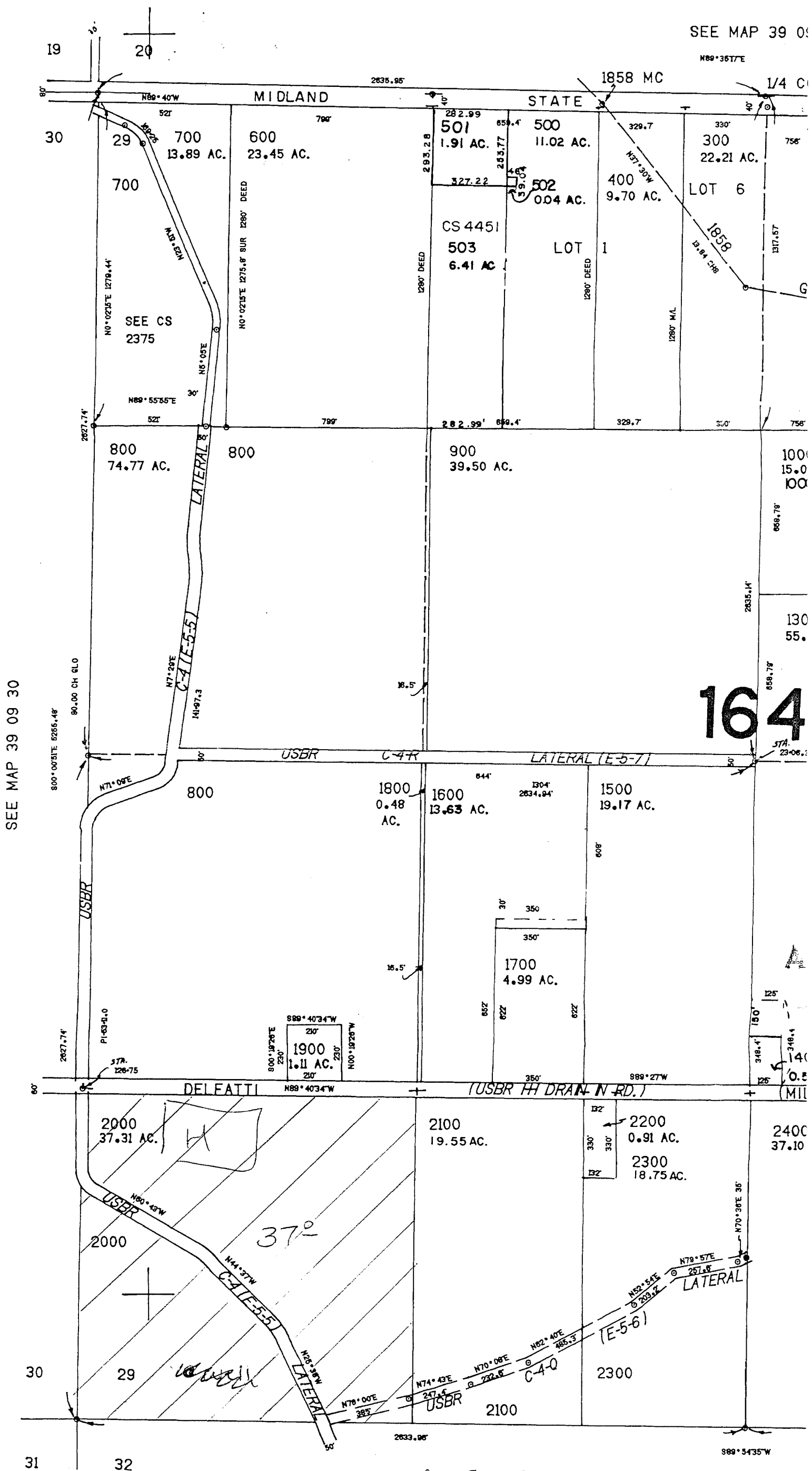


THIS MAP WAS PREPARED FOR ASSESSMENT PURPOSE ONLY

SECTION 20 T. 1. S. KLAMATH

SEE MAP 39 09



SEE MAP 39 09 30

164

app # 6-15601
Permit # 6-15238

SEE MAP 39 09 3

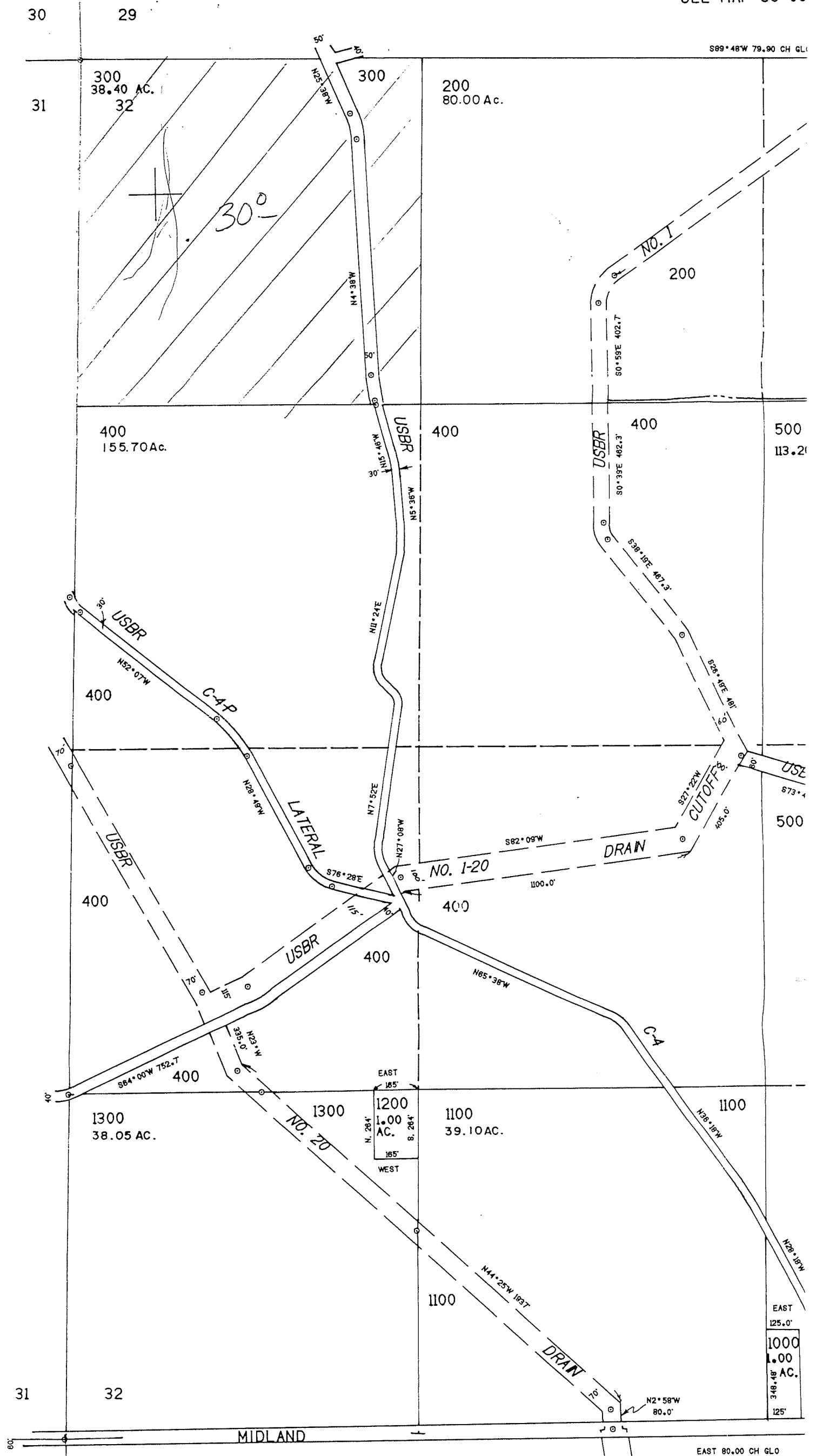
SECTION 32 T.3
KLAMATH

1-40

THIS MAP WAS PREPARED FOR
ASSESSMENT PURPOSE ONLY.

SEE MAP 39 09

SEE MAP 39 09 31



app# G-15601
Permit # G-15238

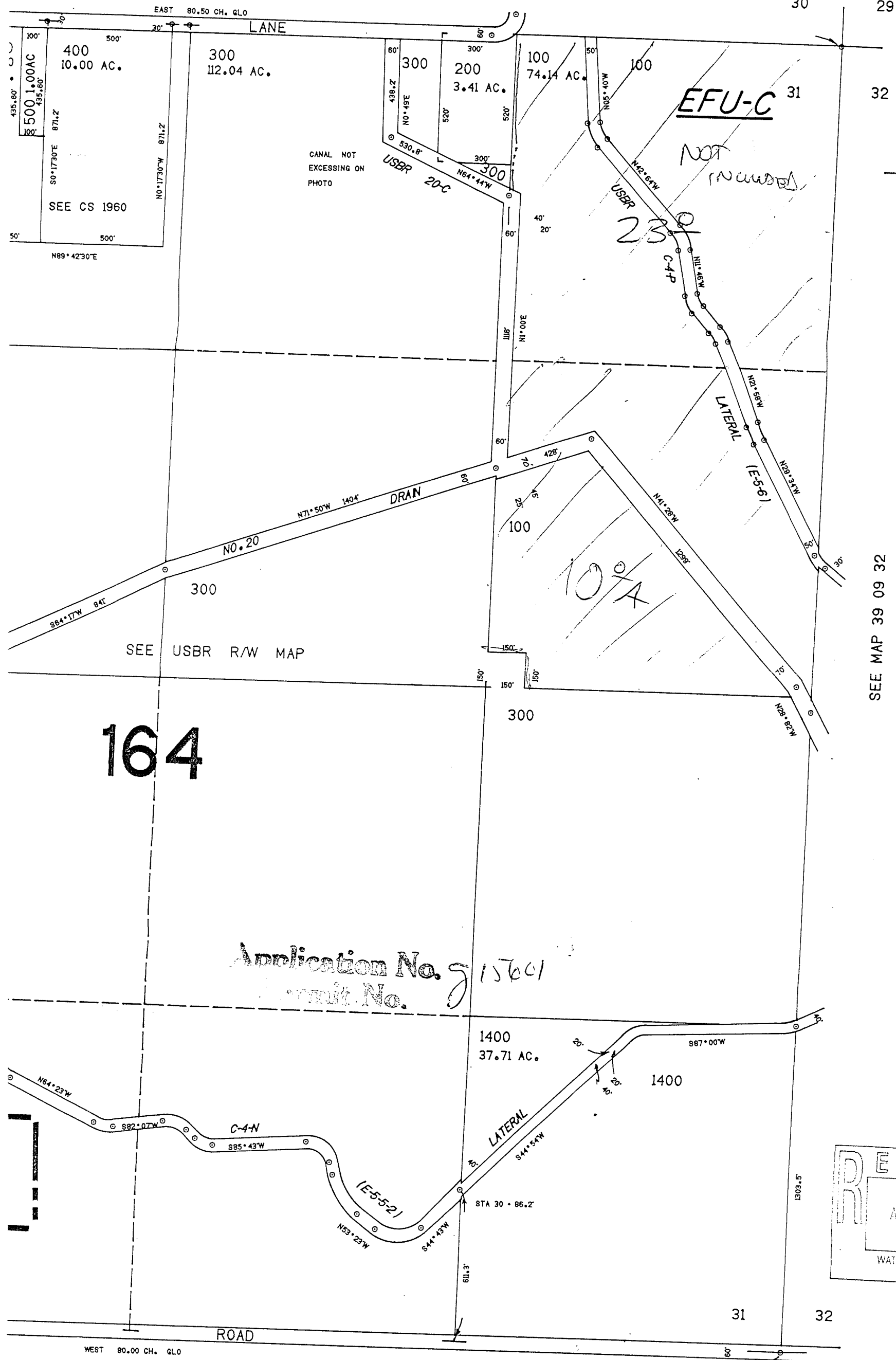
SEE MAP 40

KLAMATH COUNTY

1"=400'

39 09 31
& INDEX

SEE MAP 39 09 30

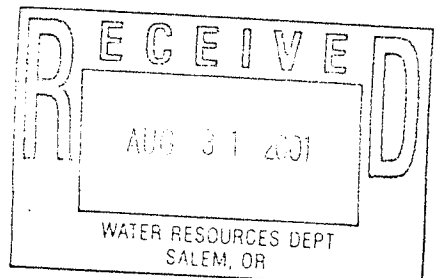


175.000

SEE MAP 39 09 32

164

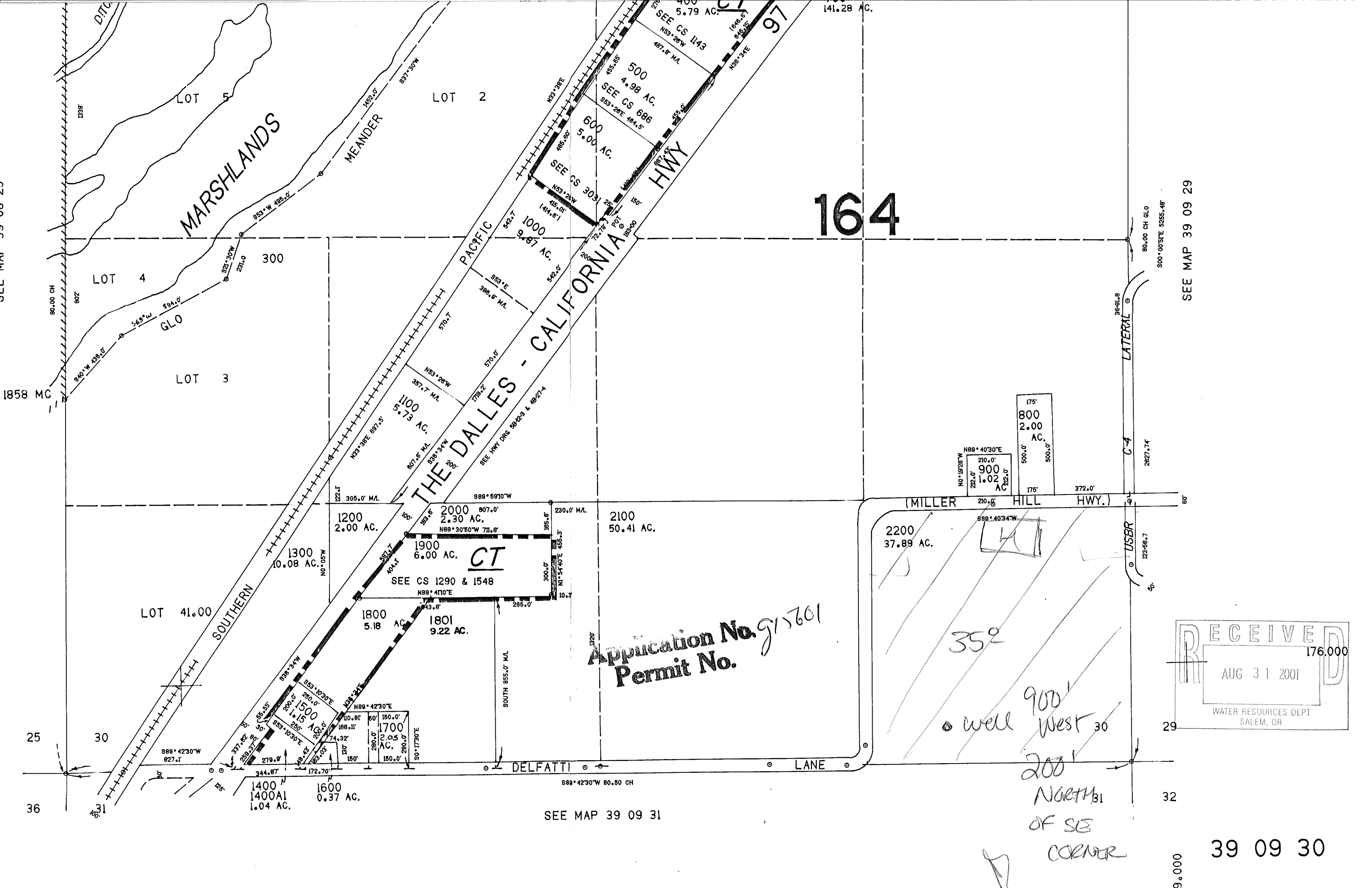
Application No. 6-15601
Permit No.



SEE MAP 40 09 06

app # 6-15601
Permit # 6-15238

39 09 31
& INDEX



164

SEE MAP 39 09 29

Application No. 915601
 Permit No.

RECEIVED
 176.000
 AUG 31 2001
 WATER RESOURCES DEPT
 SALEM, OR

352
 well 900 West 30
 NORTH OF SE
 CORNER

SEE MAP 39 09 31

39 09 30

9.000