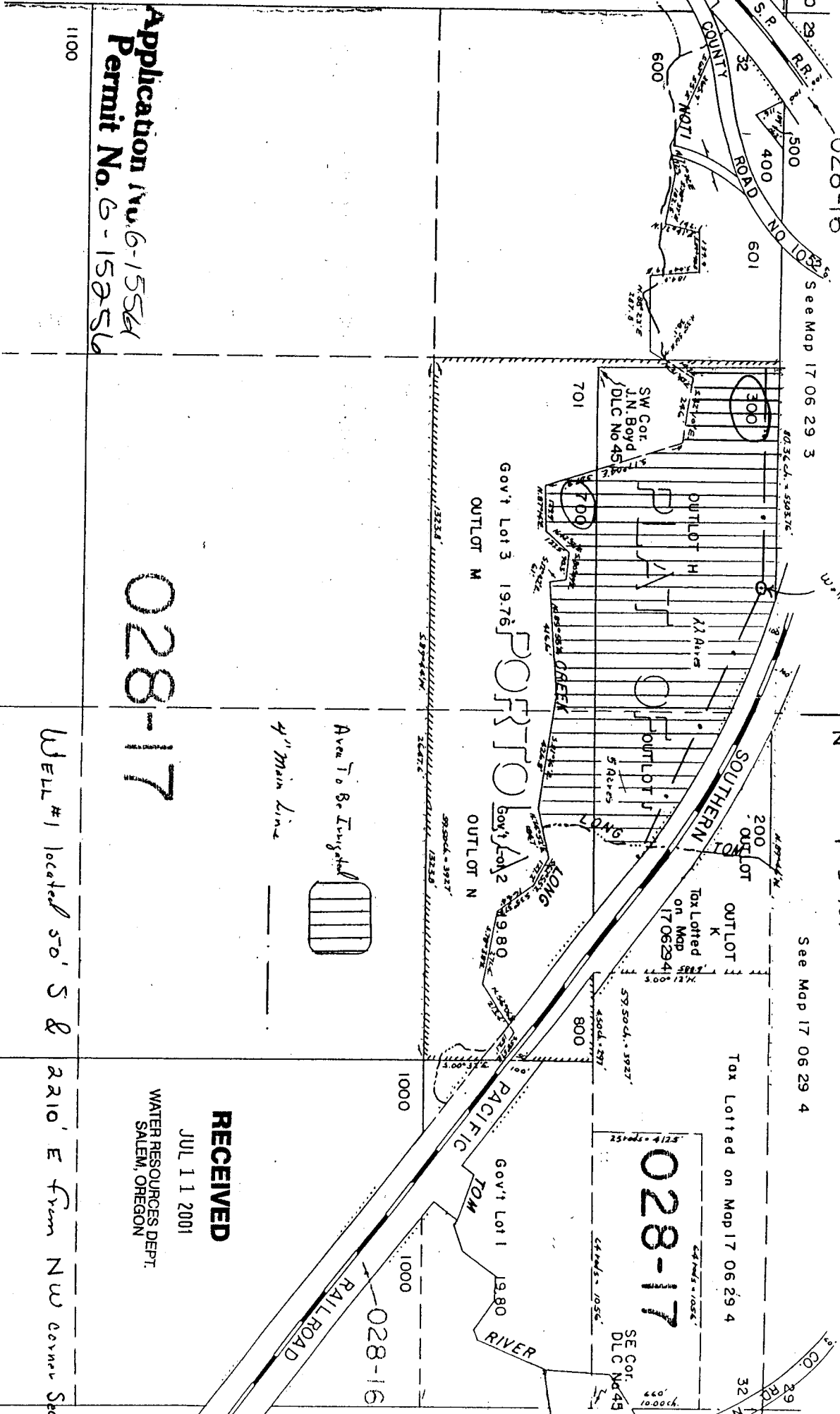


028-16

See Map 17 06 29 3

See Map 17 06 29 4

N 1 = 407

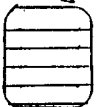


Application No. 6-15554  
 Permit No. 6-15256

1100

028-17

Well #1 located 50' S & 2210' E from NW corner Sec.



Ave To Be Investigated  
 4" Main Line

028-17

SE COR  
 DLC No 45

**RECEIVED**

JUL 11 2001

WATER RESOURCES DEPT.  
 SALEM, OREGON