

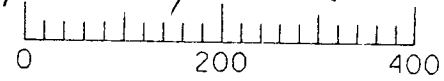
THIS MAP WAS PREPARED FOR ASSESSMENT PURPOSE ONLY

NE1/4 SEC.19 T.8S. R.39E. W.M. BAKER COUNTY

well is located in the

NWNE Sec 19 T8S R39E Wm

approximately 900' East and 630' South of the N1/4 of Sec 18



SEE MAP 8 39 18D

Legend

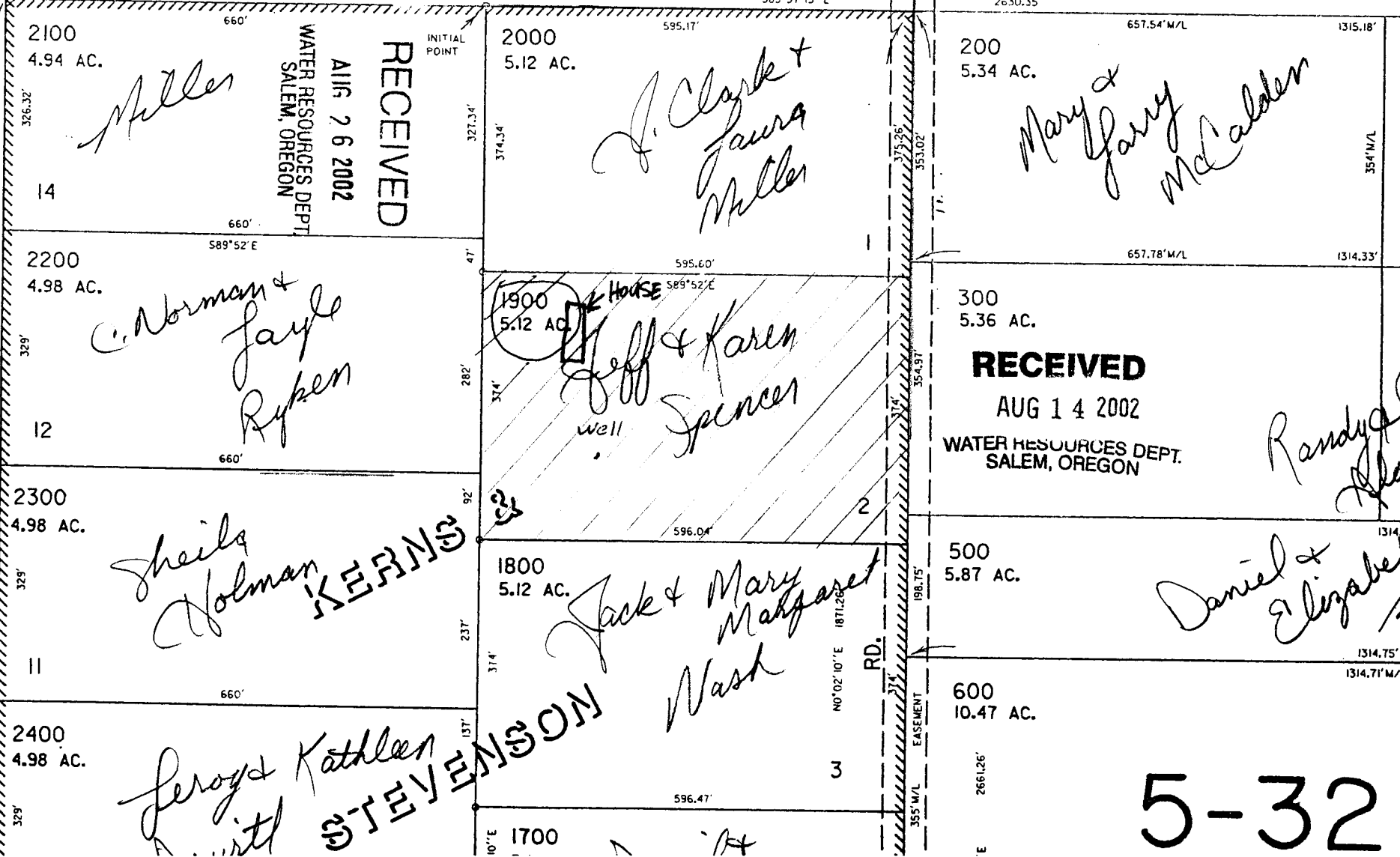
Place of use

N1/4 COR.



app# 6-15827 Permit # 6-15264 SCALE IN FEET

CO. RD. 697



5-32