

EXISTS BETWEEN THE OREGON STATE WPT. DEPT. AND THE LOCAL SURVEYOR ABOUT THE PLACEMENT OF THE TOWNSHIP LINE BETWEEN 7 38 AND 7 35.

LOT 37.49

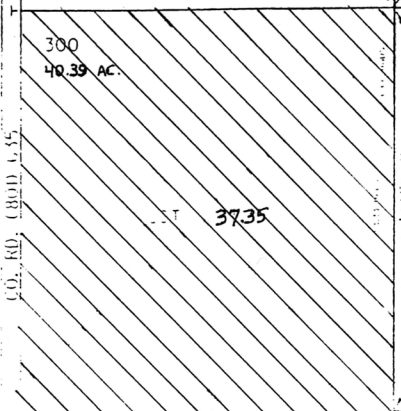


T 7 South
R 39 East
Section 31

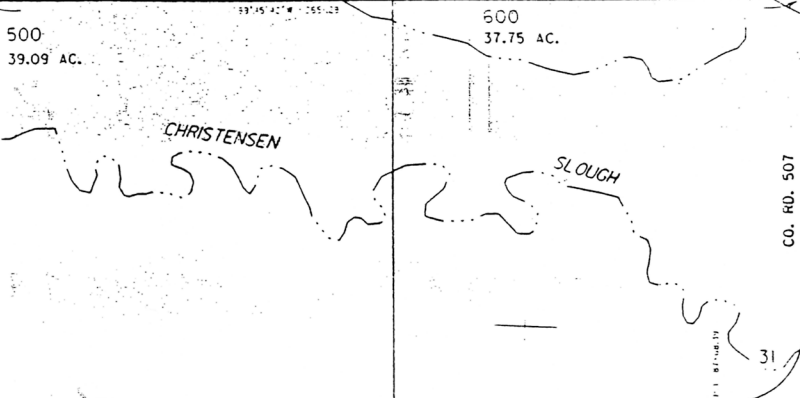
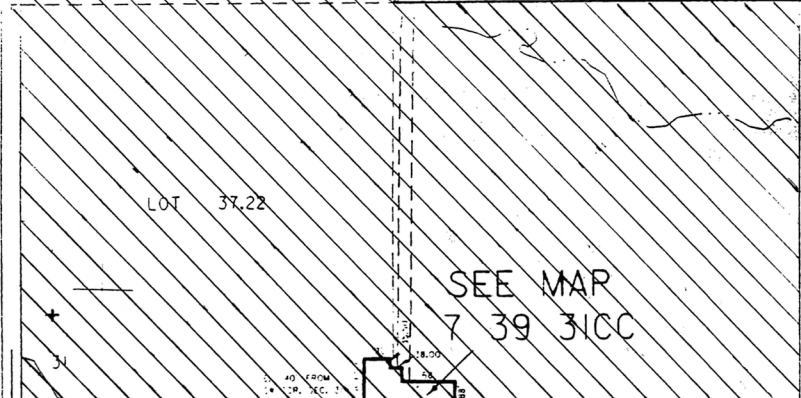
RECEIVED
JUL 26 2001
WATER RESOURCES DEPT
SALEM, OREGON

5-24 1"=400'

SEE MAP 7 38 36



SEE MAP 7 38 36DD



NO. P1998-008

Application No. 515569
Permit No. 6-3065

Well 150' east and 250' north of SW section corner of Section 31

SEE MAP 7 39 31CC

(Favorite slough has been farmed over)

SEE MAP 8 39

ANTHONY
HAINE
S. ROCK CR. RD.
CO. RD. 507

SEE MAP 7 39 32