

N



T 40S R 9E WM

1" = 660'

Well #2 located:
N 2573' W 556'
from SE corner Sec.8

155 ACRES

WATER TO BE
DRAWN & USED
IN KLAMATH
COUNTY, KLAMATH
BASIN

LEGEND:

8 9
17 16 Section Corner

Proposed Place
of Use

Proposed Well
Site

- - - 6" Mainline

= = = 12" Mainline

- o - Proposed 8"
Mainline

o-o-o Irrigation
Canal (KID)

T-1174

LOWER KLAMATH LAKE ROAD

T-1257

NHEL

38.2

21.1

8 9
17 16

T-1238

NHEL

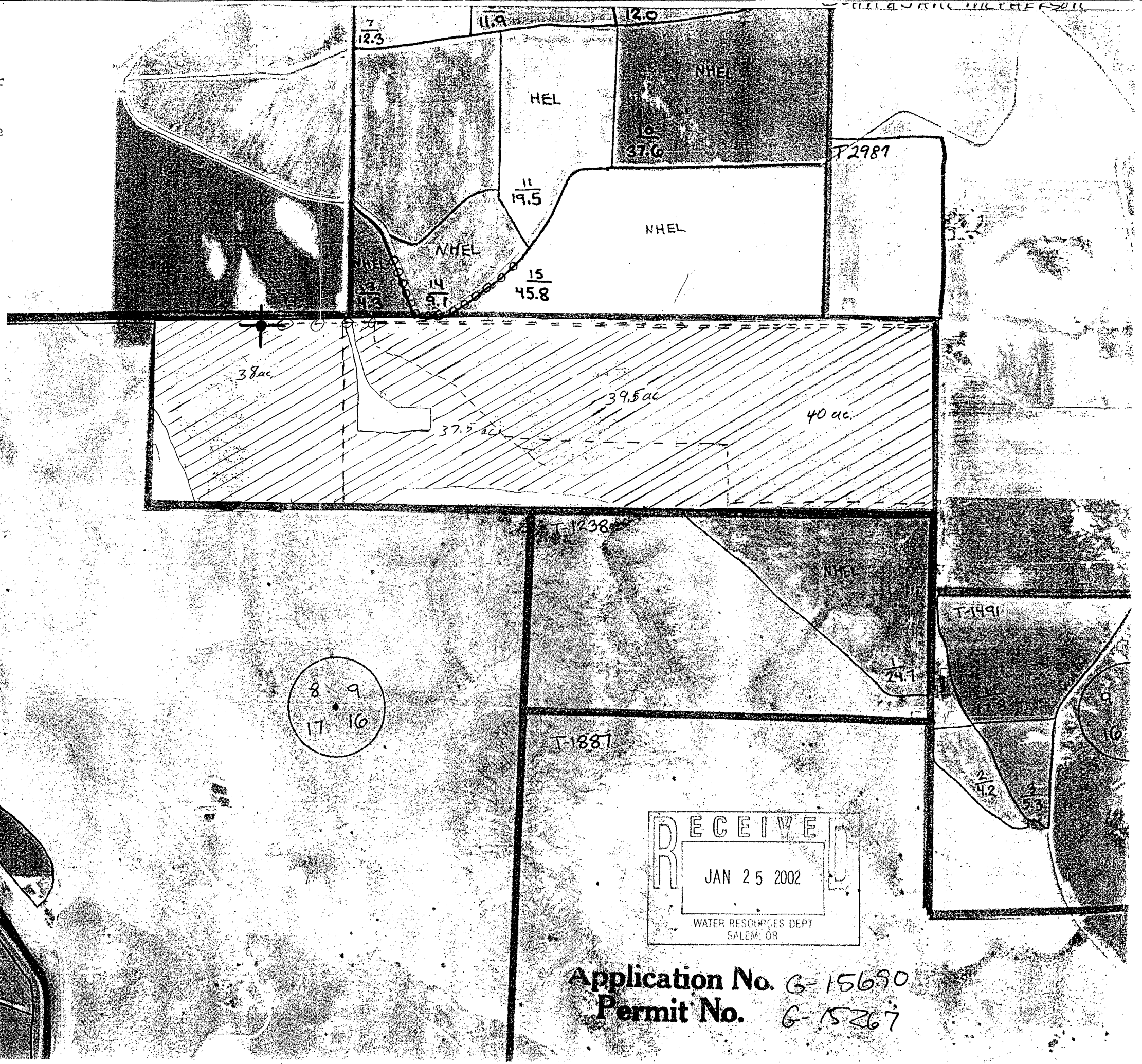
T-1491

24.7

T-1887

RECEIVED
JAN 25 2002
WATER RESOURCES DEPT
SALEM, OR

Application No. G-15690
Permit No. G-15267



Application No. 615690
Permit No. 61567

T-1174

3
792

N
↑
T 40S R 9E
1" = 660'

Well #3 located:
N 1763' S 2621'
from NE corner
Sec. 17

181 ACRES

WATER TO BE
DRAWN & USED
IN KLAMATH
COUNTY, KLAMATH
BASIN

LEGEND:

8 9
17 16 Section Corner

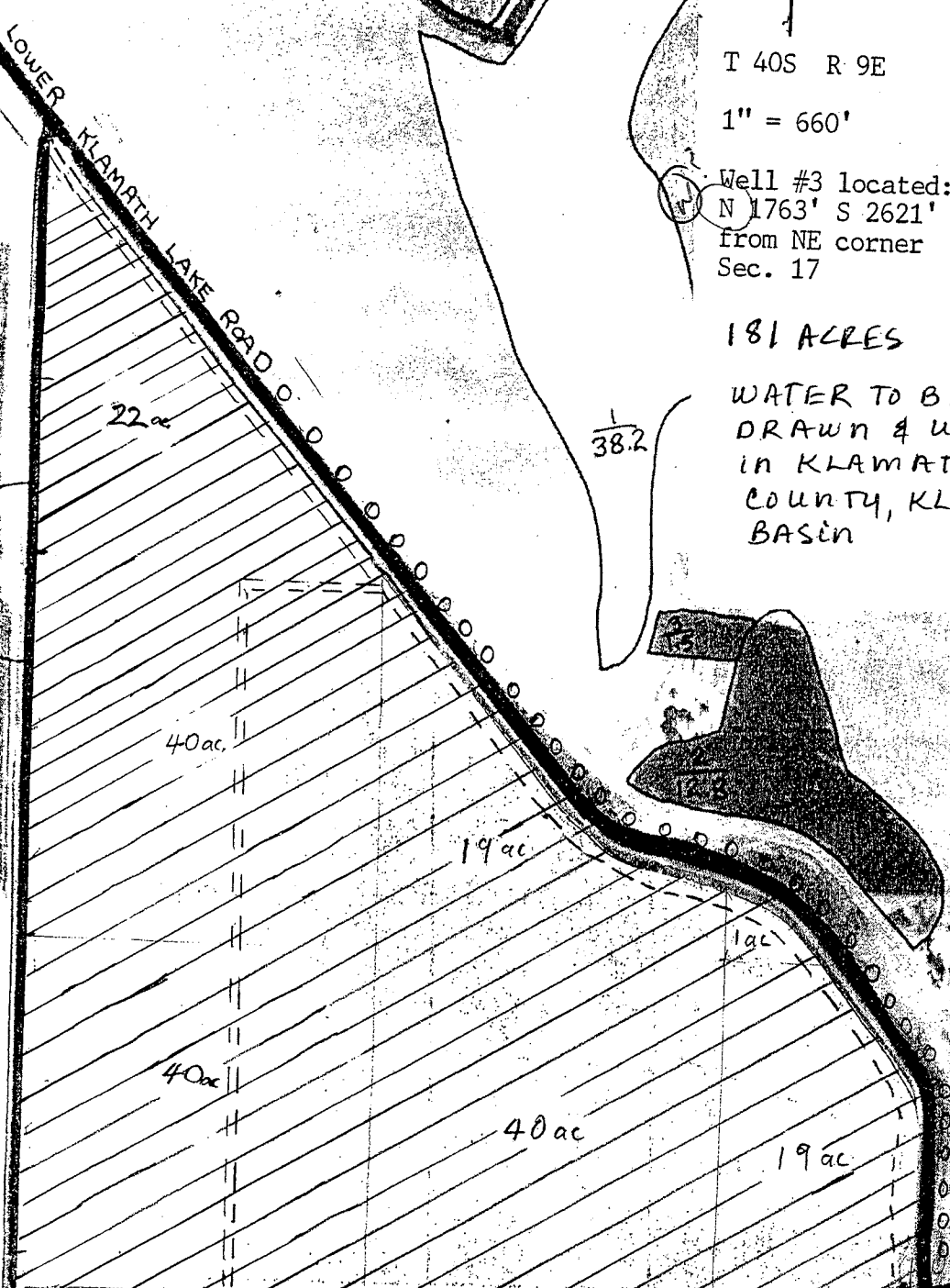
Proposed place
of use

Proposed Well
Site

--- Ditch 8' x 5'

=== 18" Mainline

o o o KDD Canal (north)



22 ac

38.2

40 ac

19 ac

1 ac

40 ac

40 ac

19 ac

T-723

NHEL

NHEL

4
47150

17 1075

2
9915

19 20


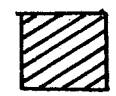
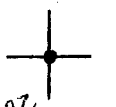
17 16
20 21

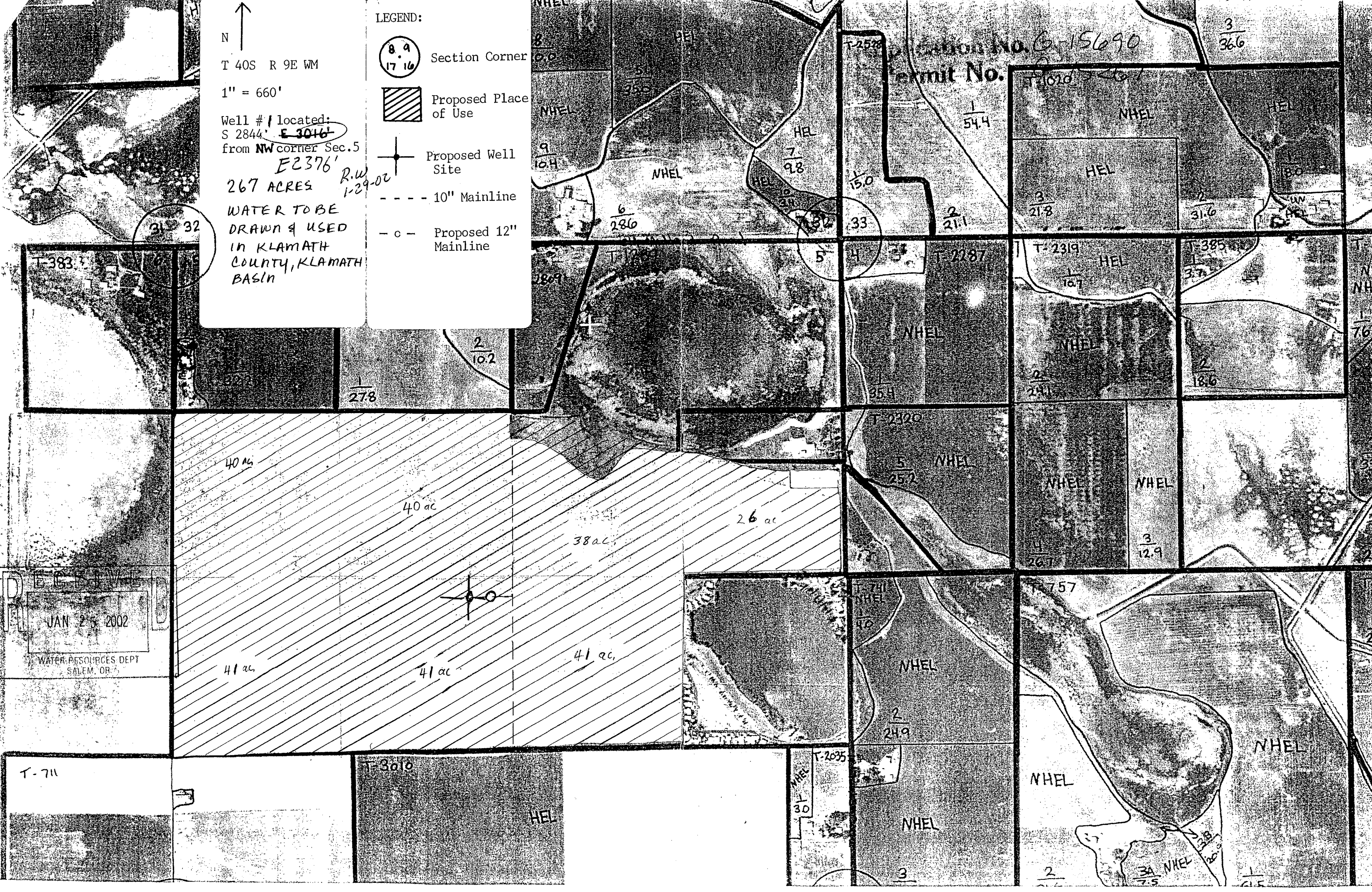
RECEIVED
JAN 25 2002
WATER RESOURCES DEPT
SALEM, OR

3
924

N
 ↑
 T 40S R 9E WM
 1" = 660'

Well #1 located:
 S 2844' E 3016'
 from NW corner Sec. 5
E 2376'
 267 ACRES R.W. 1-29-02
 WATER TO BE
 DRAWN & USED
 IN KLAMATH
 COUNTY, KLAMATH
 BASIN

LEGEND:
 Section Corner
 Proposed Place of Use
 Proposed Well Site
 - - - - 10" Mainline
 - o - Proposed 12" Mainline



RECEIVED
 JAN 25 2002
 WATER RESOURCES DEPT
 SALEM, OR