

JACKSON COUNTY

1" = 400'

APPROX.

PRIMARY 212 ACRES

WORKING COPY

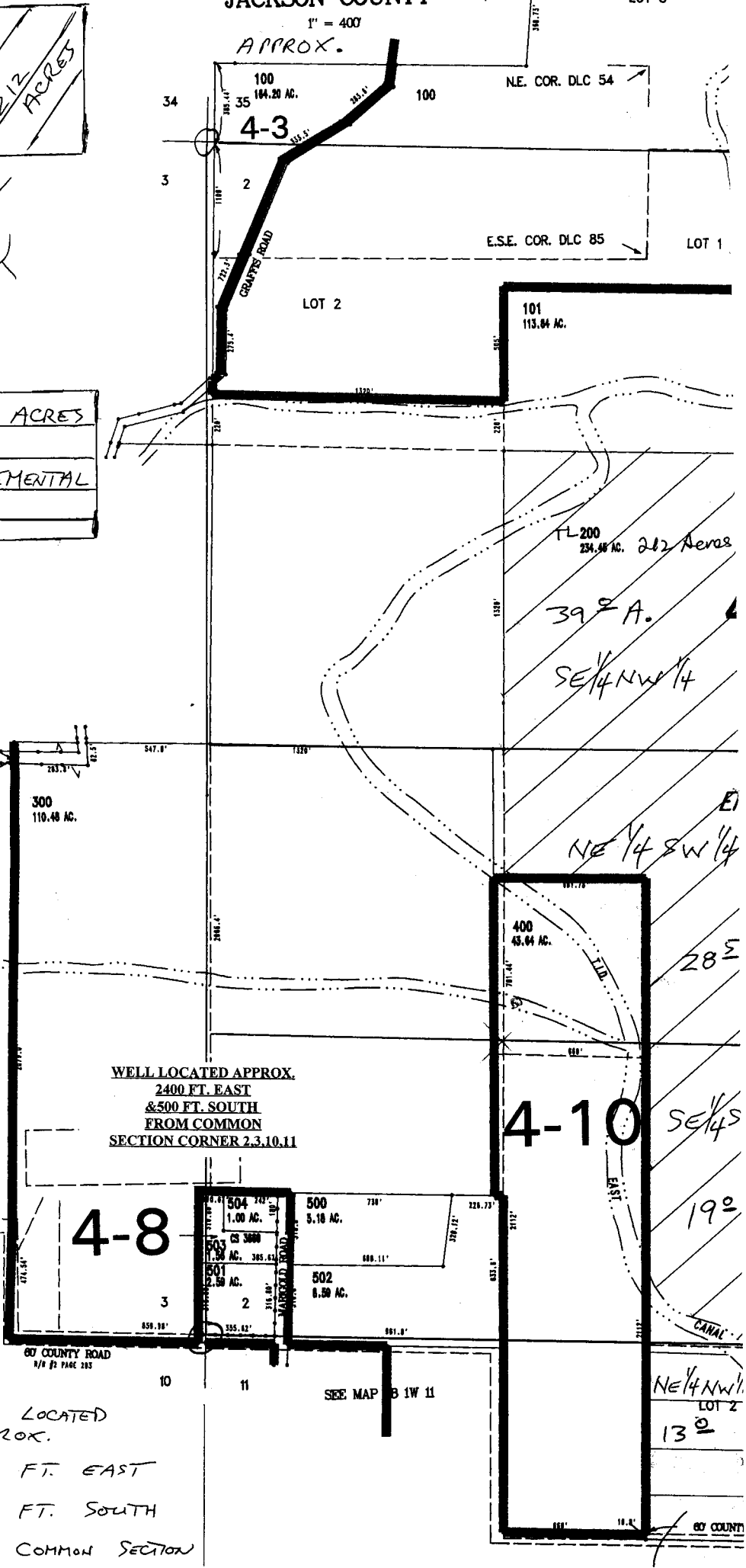
22 ACRES SUPPLEMENTAL

SEE MAP 88 1W 3

COR. DLC 84
COR. DLC 83

Application No. 915733
Permit No. G-15276

WELL LOCATED APPROX.
2400 FT. EAST
& 500 FT. SOUTH
FROM COMMON
SECTION CORNER 2,3,10,11



WELL LOCATED APPROX.
2400 FT. EAST
& 500 FT. SOUTH
FROM COMMON SECTION

SEE MAP 8 1W 11

60 COUNTY

LOT 2

LOT 1

4-10

RECEIVED

MAR 29 2002

WATER RESOURCES DEPT.
SALEM, OREGON

CANCELLED NO

102
202



CS 6787

CS 6728

CS 6682

CS 3706

Primary 40° A

I-3

SW 1/4 NE 1/4

SEE MAP

38 1W 2A

NW 1/4 SE 1/4

40° A

40° A

SW 1/4 SE 1/4

38 1W 2D

RECEIVED

MAY 29 2001

WATER RESOURCES DEPT.
SALEM, OREGON

38 1W 2

DOR CONVERSION OCTOBER 26 1999
REV FEBRUARY 11 2000

THIS POINT LOCATED FROM S. TIERING BLK. V. 548, P. 214

42
202
5.08 AC.
201
7.30 AC.

LOT 3

90° RR-5

PARTITION
PLATON
P-73-9

NW 1/4 NE 1/4

N.E. COR.

EAST CANAL

