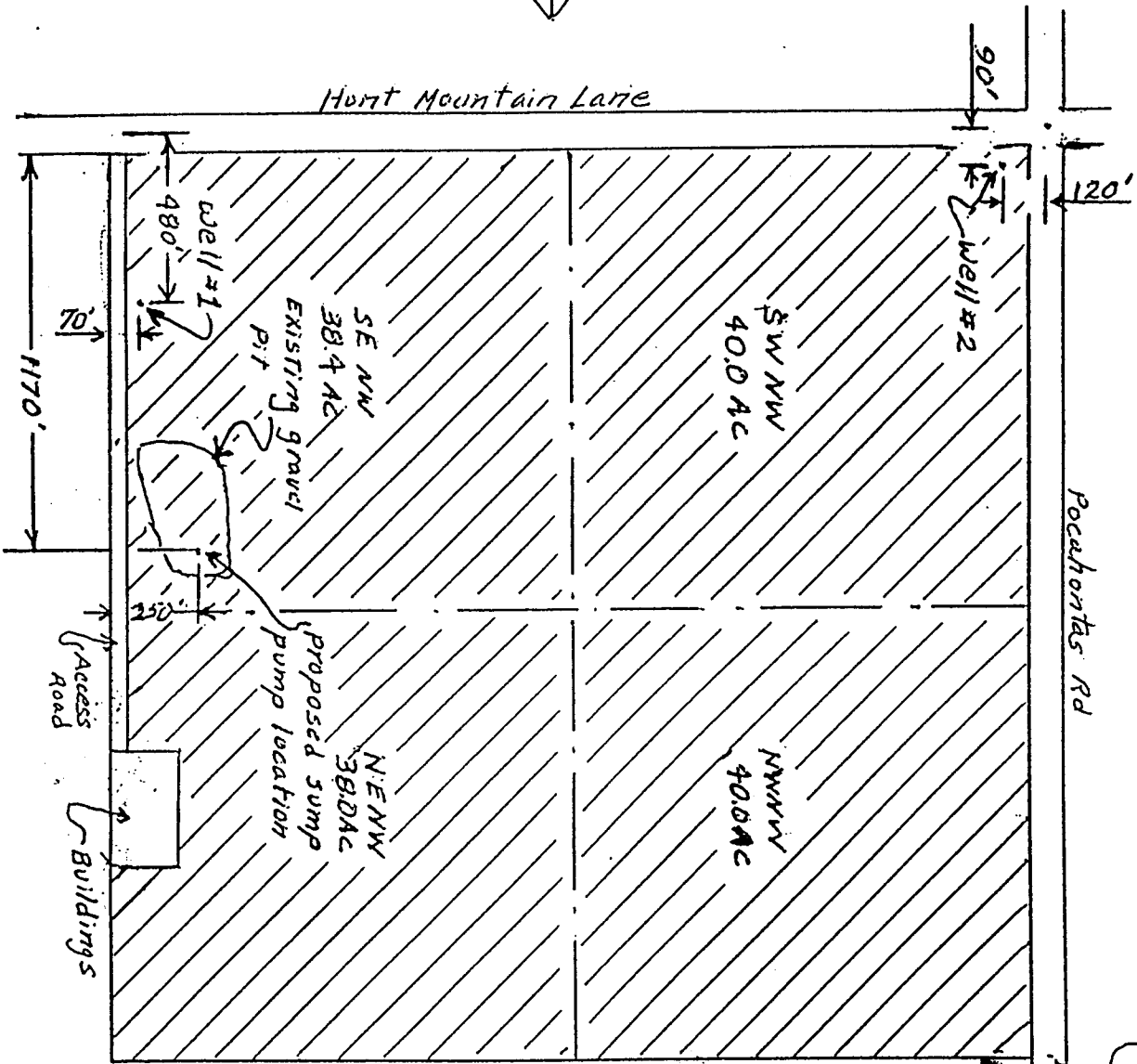


APPLICATION MAP FOR SUPPLEMENTAL WATER RIGHT

NW 1/4 S. 20, T. 85, R. 39 E, J. W. M.
 TAX lots 200, 201 and 202

Corner common to
 Sections 17, 18, 19 & 20

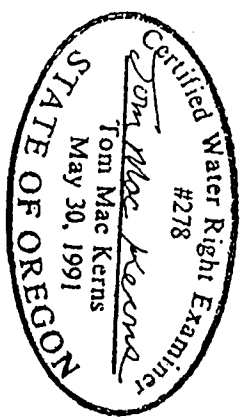


Application No. G-15283
Permit No. G-15277

RECEIVED

JAN 25 2001

WATER RESOURCES DEPT.
 SALEM, OREGON



- Land to be irrigated
- Scale 1 inch = 500 feet
- Drawn 12-8-00 TMK
- Revised 1-19-01 TMK