

U.S. #30

Land to be irrigated - NW 1/4, NW 1/4, Sec #14, T4N-R25E

(note) U.S.R.S. brass cap is approx. 45' south & 35' west of the SW corner of section #14. Elevation indicated on the brass cap is 386.945 feet.

* This waste water is runoff water from irrigation operations, and it collects and stands at this point.

←--- = Drainage course
← = Direction of runoff

RECEIVED
JAN 18 1960

STATE ENGINEER
SALEM, OREGON

RECEIVED
DEC 29 1959

STATE ENGINEER
SALEM, OREGON

RECEIVED
FEB 16 1960
STATE ENGINEER
SALEM, OREGON

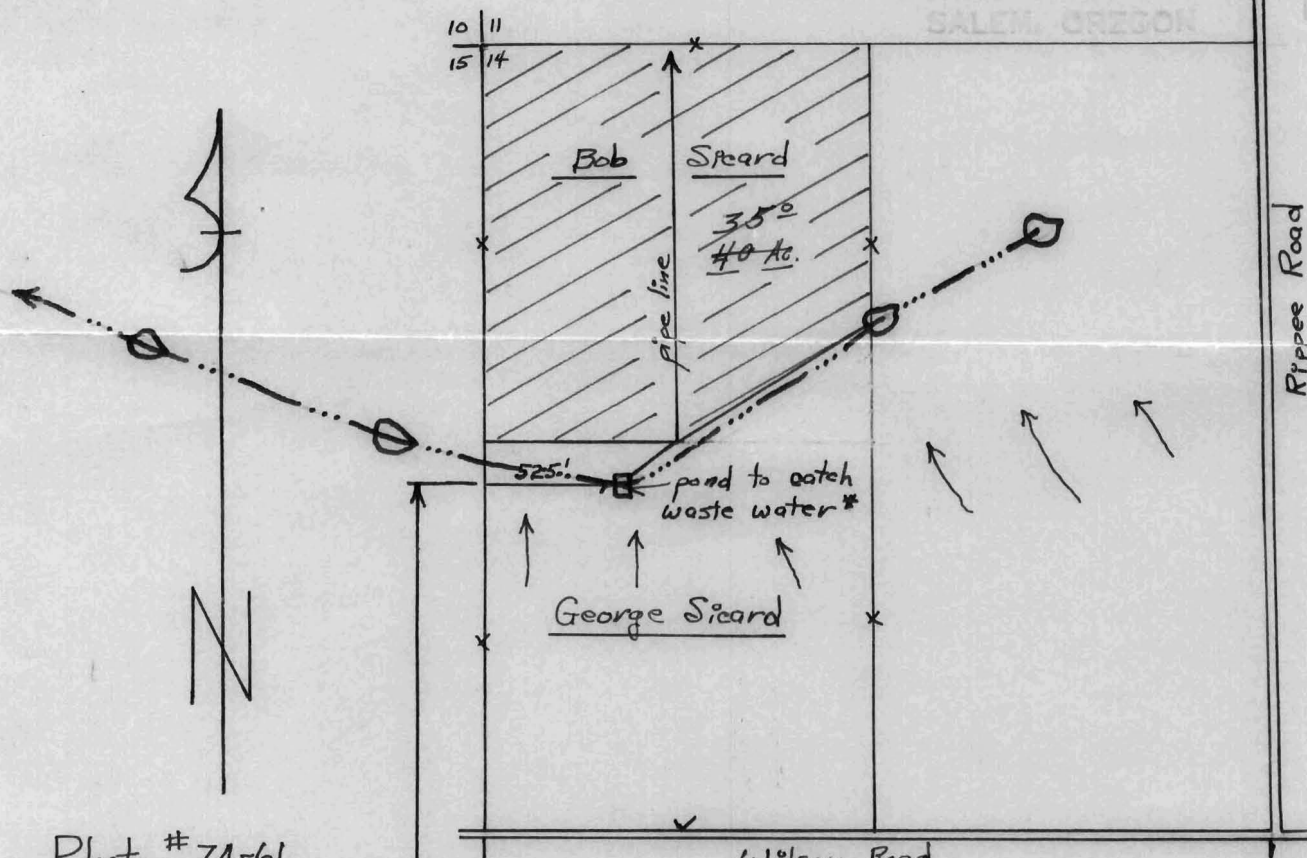
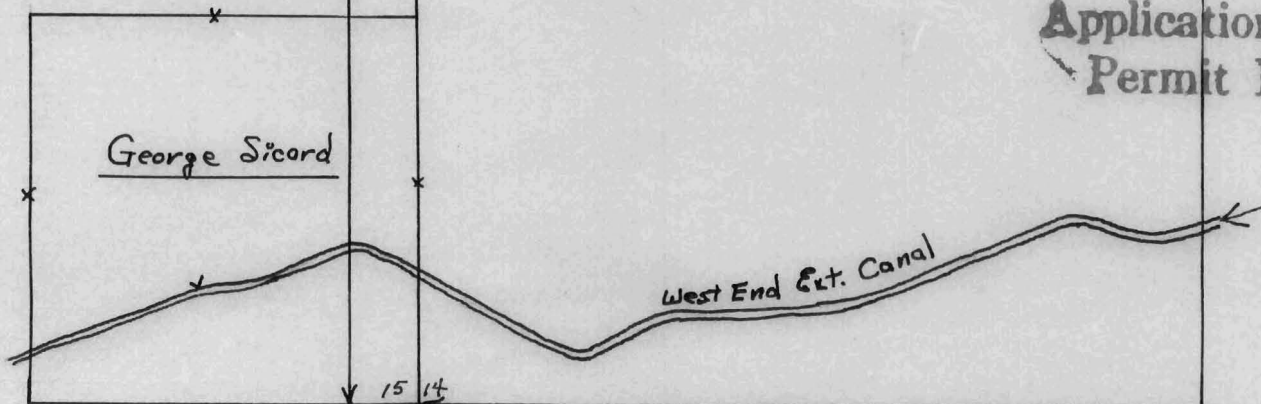


Photo # 74-61

Application No. G-1670

Permit No. G-1528



U.S.R.S. brass cap (note)

4" x 4" witness post with sections marked in black paint.