

SW 1/4 Sec. 25 T.6N. R.35E.W.M.

6N 35 25C

UMATILLA COUNTY

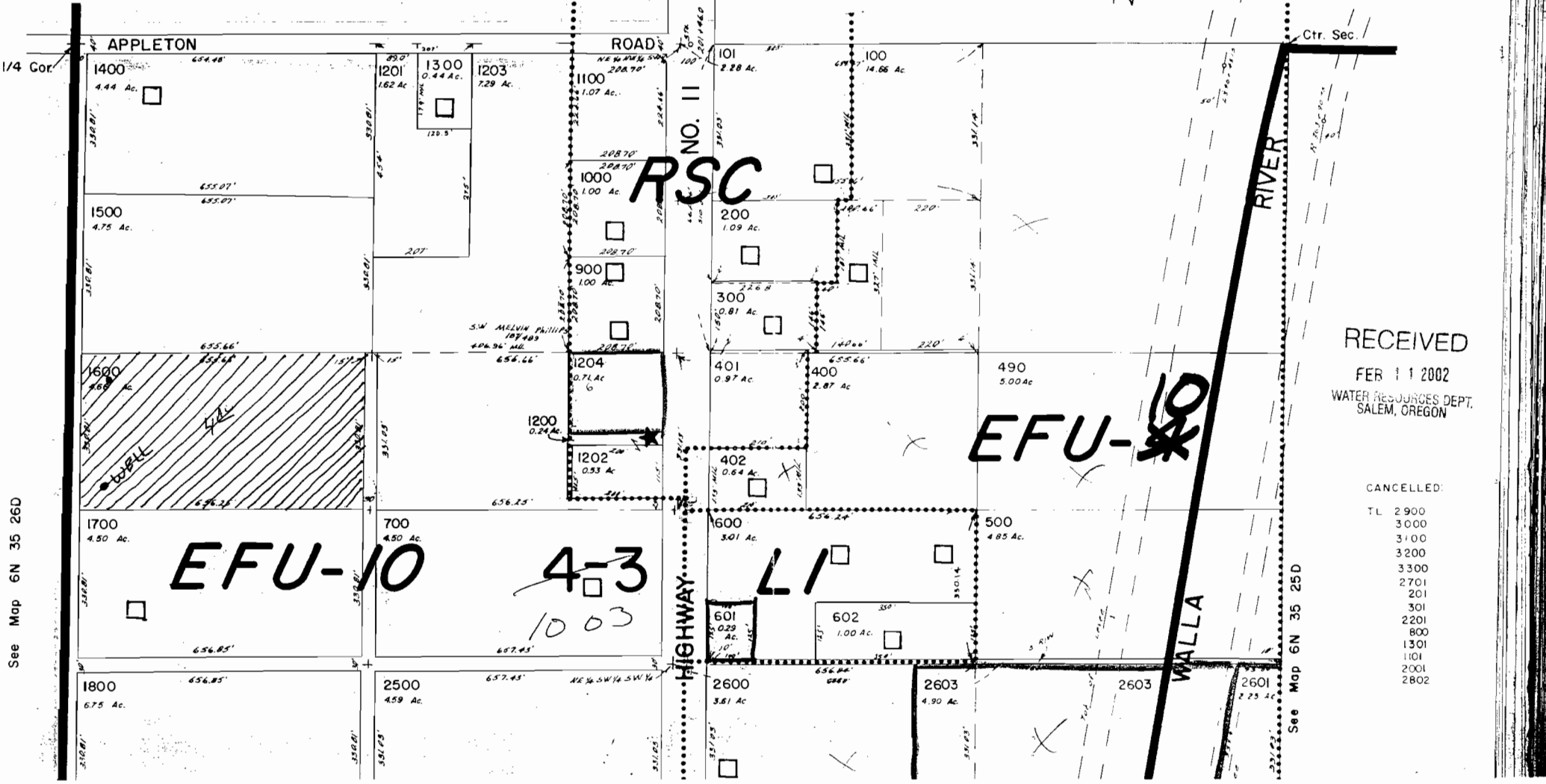
Well LOCATED:  
960' S and 60' EAST  
FROM W 1/4 CORNER OF TOWNSHIP 6N  
RANGE 35E Section 107 25

1" = 200'

See Map 6N 35 25B

Application No. 6-15707  
Permit No. 6-15283

Aerial Photo No. NZ-6P-64



RECEIVED  
FEB 11 2002  
WATER RESOURCES DEPT.  
SALEM, OREGON

- CANCELLED:
- TL 2900
  - 3000
  - 3100
  - 3200
  - 3300
  - 2701
  - 201
  - 301
  - 2201
  - 800
  - 1301
  - 1101
  - 2001
  - 2802

See Map 6N 35 26D

See Map 6N 35 25D