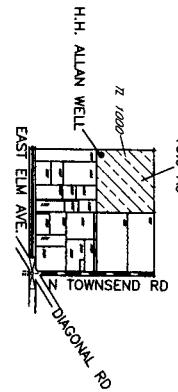
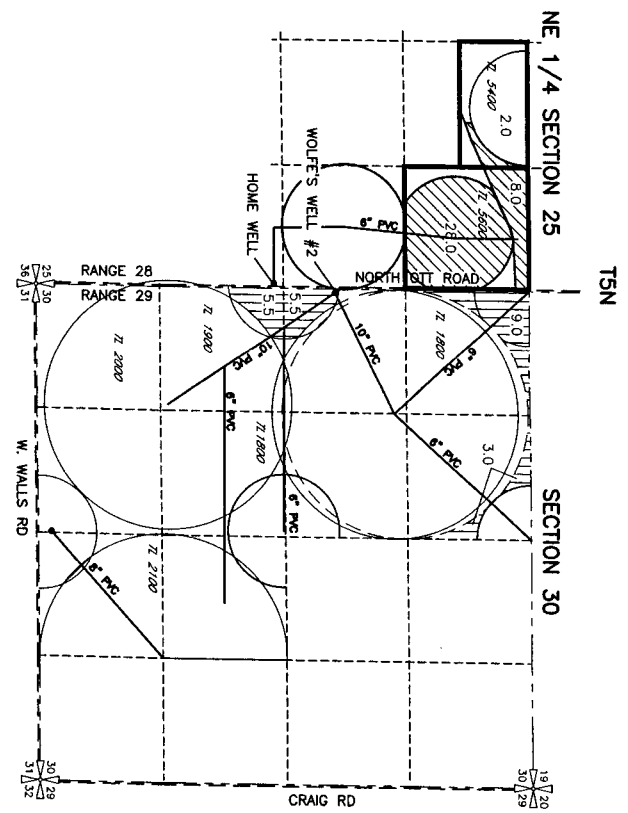
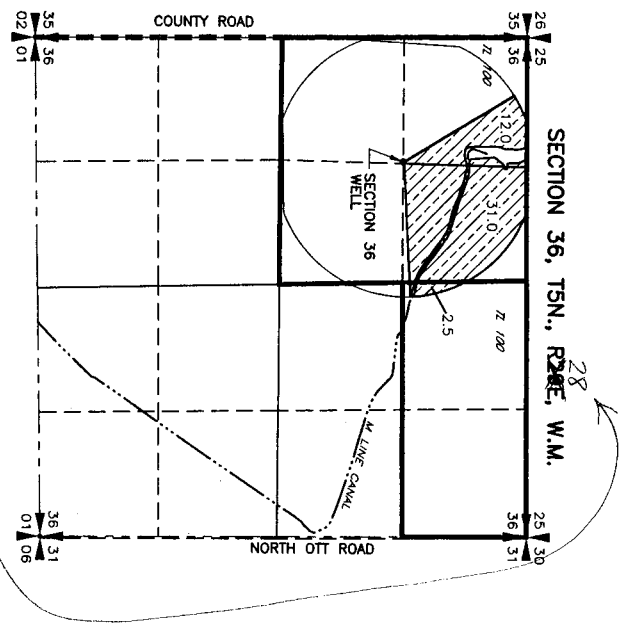


CHARLES BLOODSWORTH
 AMENDED GROUND WATER APPLICATION MAP
 APPLICATION NUMBER G-15084
 UMATILLA COUNTY, OREGON

Application G-15084
 Permit G-15292




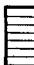

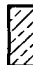
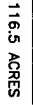
SE 1/4 SW 1/4 SECTION 1
 T4N R28E, W.M.

SECTION 36 POINT OF APPROPRIATION:
 LOCATED 1310' SOUTH AND 1320' EAST OF THE
 NORTHWEST CORNER OF SECTION 36, T5N, R28E, W.M.

WOLFE'S WELL #2
 POINT OF APPROPRIATION
 LOCATED 2090' SOUTH AND 40' EAST FROM THE NORTHWEST
 CORNER OF SECTION 30, T5N, R28E, W.M.

HOME WELL
 POINT OF APPROPRIATION 2540' NORTH AND 90' WEST FROM THE SE
 CORNER SECTION 25, T5N, R28E, W.M.

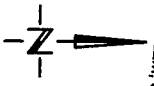
H.H. ALLAN WELL
 POINT OF APPROPRIATION 730' NORTH AND 1280' WEST FROM THE S 1/4
 CORNER SECTION 1, T4N, R28E, W.M.

-  PRIMARY IRRIGATION FROM HOME WELL 38.0 ACRES
-  PRIMARY IRRIGATION FROM WOLFE WELL #2 23.0 ACRES
-  PRIMARY IRRIGATION FROM H.H. ALLAN WELL 10.0 ACRES
-  PRIMARY IRRIGATION FROM SECTION 36 WELL 45.5 ACRES
-  116.5 ACRES

WATER RESOURCES DEPT.
 SALEM, OREGON

OCT 2 6 2000

RECEIVED



3522105G.DWG
 3522.105
 10/20/00

SCM Consultants, Inc.

Architects & Engineers
 Kennewick, WA 98336

NOTE: THE PURPOSE OF THIS MAP IS TO IDENTIFY THE APPROXIMATE LOCATION OF THE WATER RIGHT. IT IS NOT INTENDED TO PROVIDE INFORMATION RELATIVE TO THE LOCATION OF PROPERTY OWNERSHIP BOUNDARY LINES.