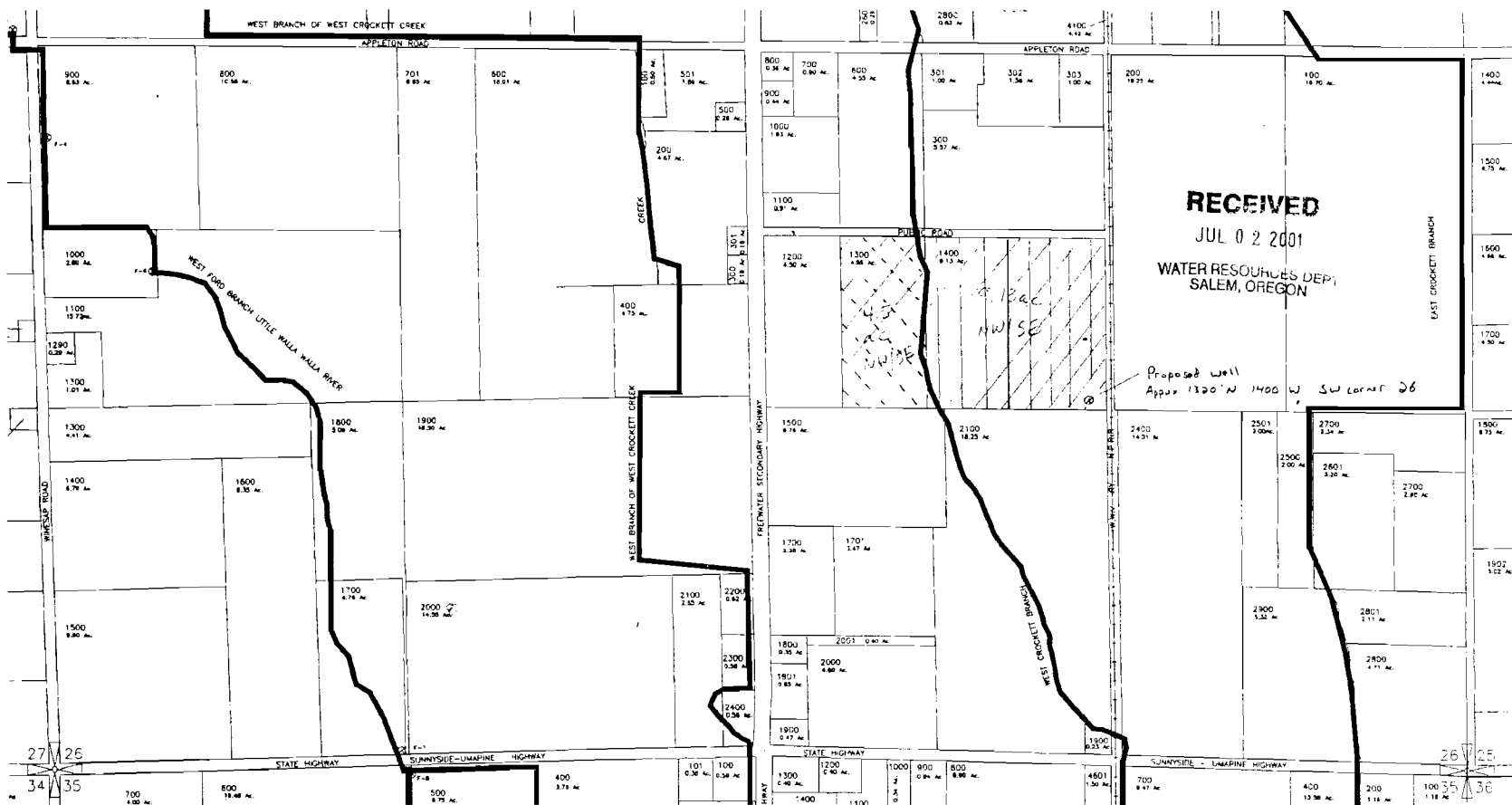


SOUTH 1/2 SECTION 26 TOWNSHIP 6 NORTH, RANGE 35 EAST, W.M.



Application No. 915557
Permit No. G-05308

Proposed Supplemental well use

49292 ac.

certificate 45002 4.5 acres in NW 1/4 of Section 26

certificate 49293 9.13 acres in NW 1/4 of Section 26S

WALLA WALLA RIVER IRRIGATION DISTRICT

SCM Consulting Engineers
Corporation, Inc. 94336

4376.015

4376-26S.DWG

11/29/00