

# MAP TO ACCOMPANY GROUND WATER APPLICATION

SITUATED IN THE SE1/4 OF SECTION 11, THE W1/2 E1/2 AND THE W1/2 OF SECTION 12, AND THE NW1/4 OF SECTION 13, T40S, R9EWM, KLAMATH COUNTY, OREGON, AUGUST, 2001

RECEIVED

JAN 07 2002

WATER RESOURCES DEPT.  
SALEM, OREGON

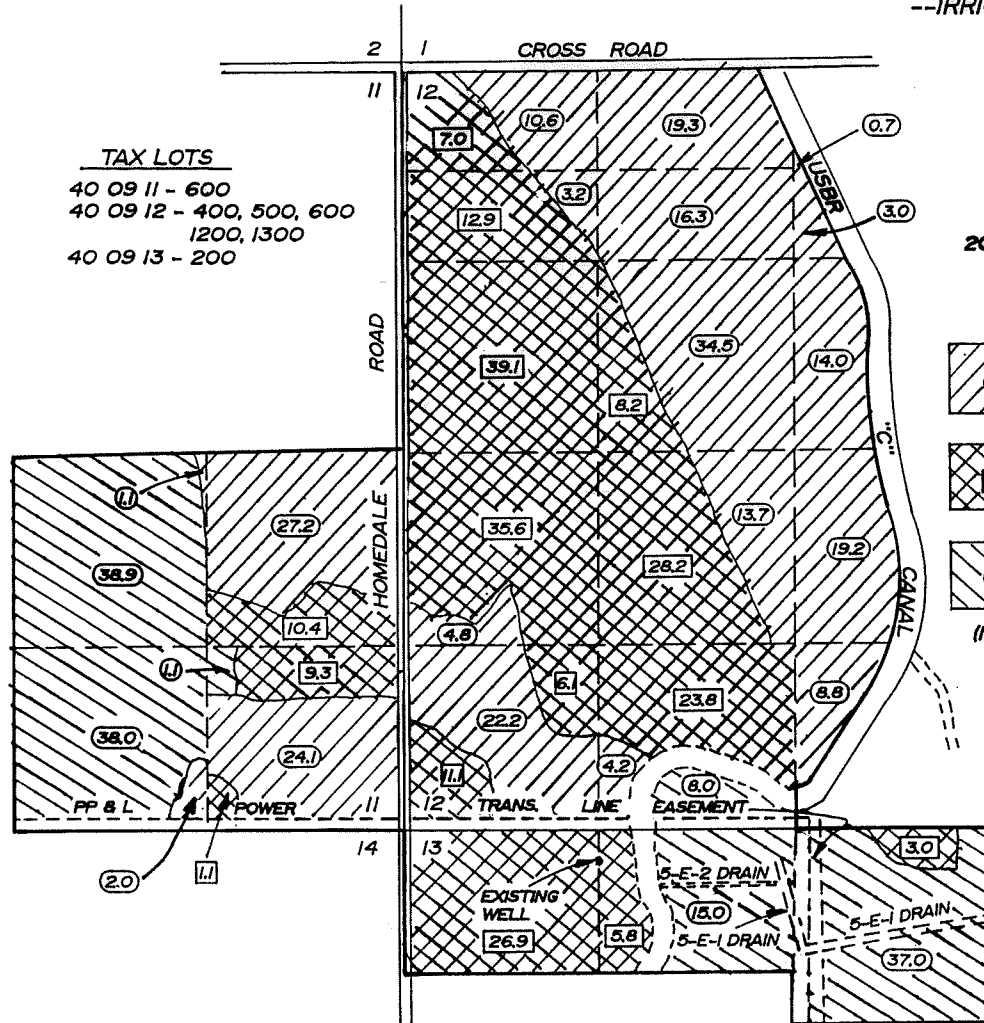
MAP PREPARED FOR

--BALIN RANCH--  
--WILLIAM WILLIAMS--

MAP PREPARED FROM

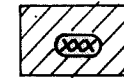
--ASSESSORS MAP--  
--AERIAL PHOTOGRAPH--  
--IRRIGATION DISTRICT MAP--

Application No. G-15679  
 Permit No. G-15333



TAX LOTS  
 40 09 11 - 600  
 40 09 12 - 400, 500, 600  
 1200, 1300  
 40 09 13 - 200

WELL LOCATION  
 200 FEET SOUTH AND 1320 FEET EAST  
 OF THE NORTHWEST CORNER OF  
 SECTION 13



LANDS SUPPLEMENTAL TO  
WARREN ACT --228.9--



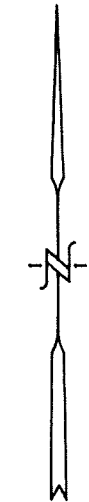
LANDS SUPPLEMENTAL TO  
KLAMATH BASIN IMPROVEMENT  
DISTRICT --228.5--



LANDS SUPPLEMENTAL TO  
KLAMATH IRRIGATION DISTRICT --138.0--

(NOTE: AREAS BY IRRIGATION DISTRICT MAPS)

TOTAL AREA THIS  
APPLICATION  
**--595.4 Ac.--**



SCALE  
1" = 1320'

THE PURPOSE OF THIS MAP IS TO IDENTIFY THE LOCATION OF THE WATER RIGHT APPLICATION. IT IS NOT INTENDED TO PROVIDE INFORMATION RELATIVE TO THE LOCATION OF PROPERTY OWNERSHIP BOUNDARY LINES.

TRU-LINE SURVEYING, INC.  
 2333 SUMMERS LANE  
 KLAMATH FALLS, OREGON 97603