

Application No. G-15702  
Permit No. G-15361

MATCH TO SHEET 5

1" = 400' T39B R9E S21



(16)

(15)

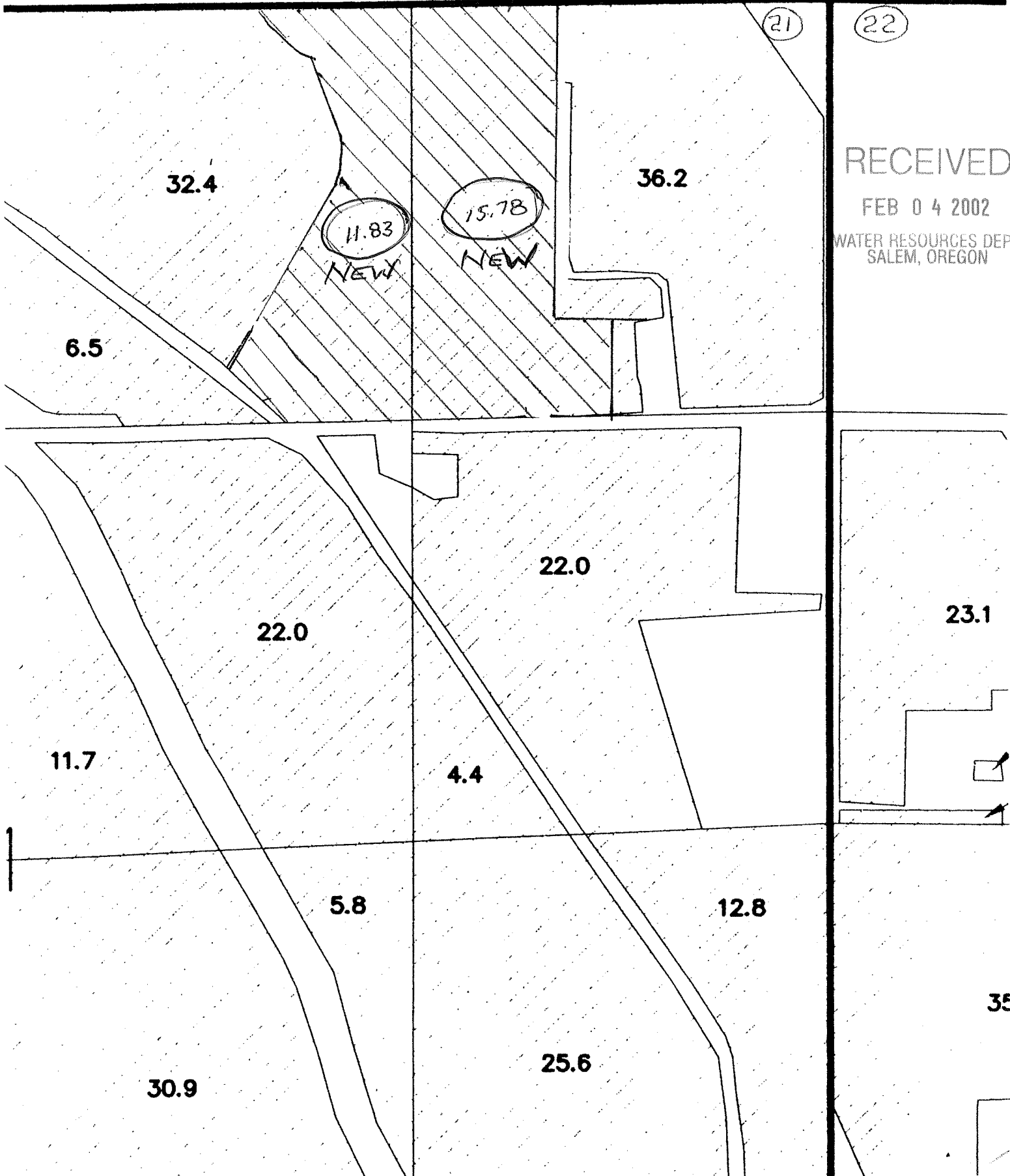
(21)

(22)

RECEIVED

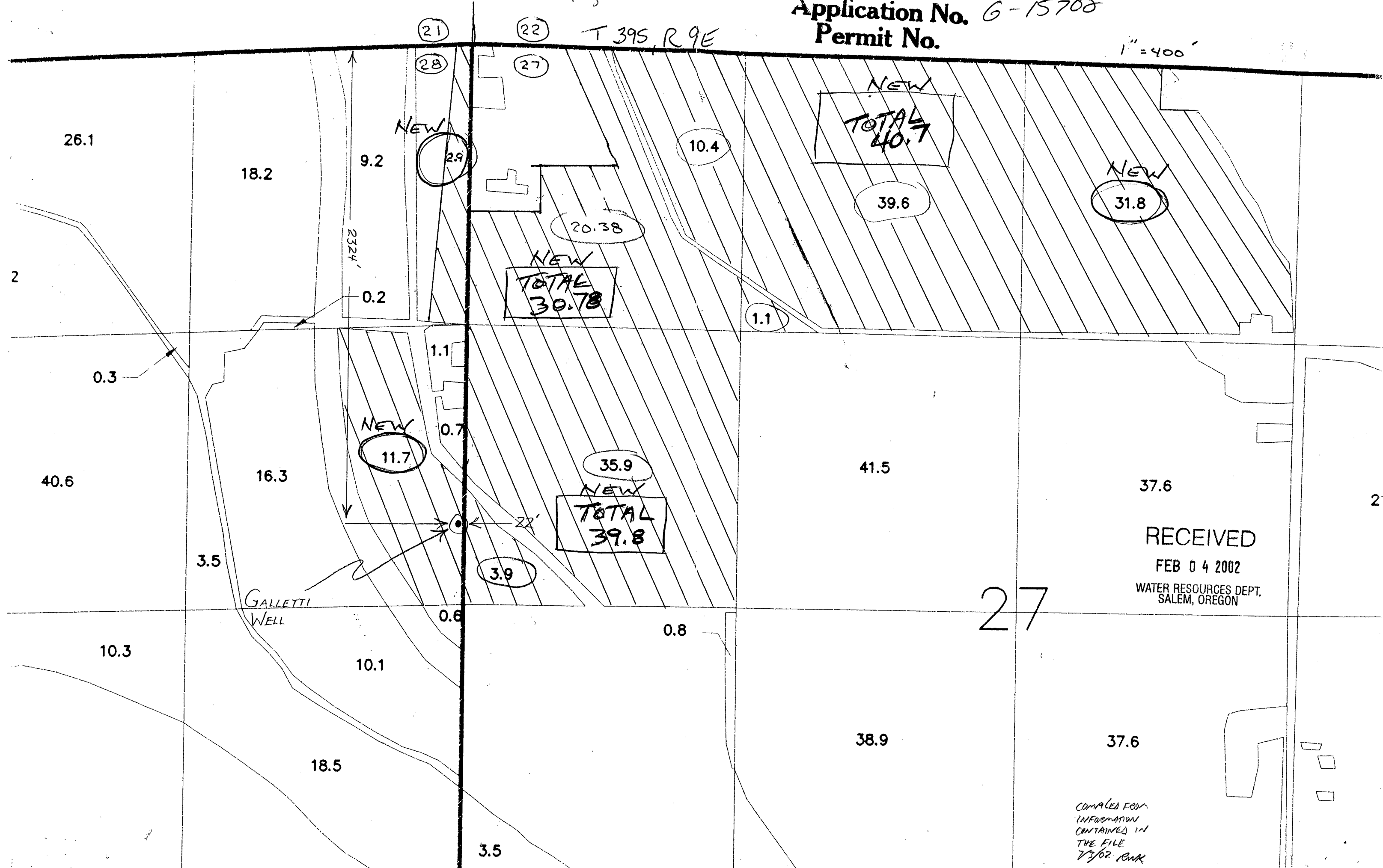
FEB 04 2002

WATER RESOURCES DEPT.  
SALEM, OREGON



1" = 400'

T 39S, R 9E



RECEIVED  
FEB 04 2002  
WATER RESOURCES DEPT.  
SALEM, OREGON

COMPILED FROM  
INFORMATION  
CONTAINED IN  
THE FILE  
7/3/02 RWR