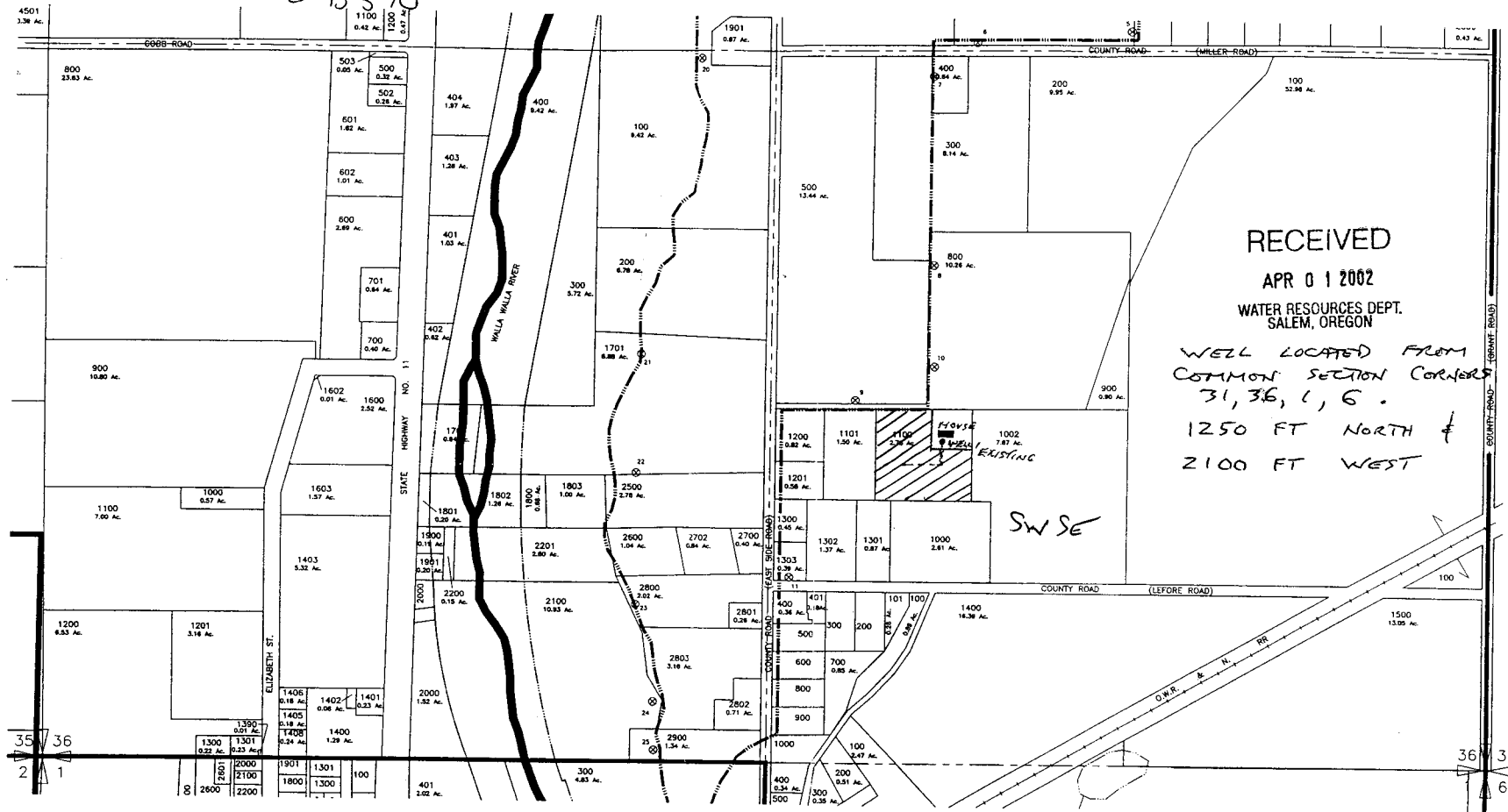
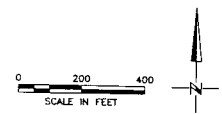


Application No. **TOWNSHIP 6 NORTH, RANGE 35 EAST, W.M.**
 Permit No. **6-15370** ⁹¹⁵⁷³⁴



RECEIVED
 APR 01 2002
 WATER RESOURCES DEPT.
 SALEM, OREGON
 WELL LOCATED FROM
 COMMON SECTION CORNERS
 31, 36, 1, 6.
 1250 FT NORTH &
 2100 FT WEST

LEGAL DESCRIPTION
 TAX LOT 1100
 M6N35 36D
 SW 1/4 SE 1/4
 2" MAIN LINE



WALLA WALLA RIVER IRRIGATION DISTRICT

DWG 36S
 SCM CONSULTANTS, INC. Architects & Engineers
 Kennewick, WA 99336

4376.015 4376-36S.DWG