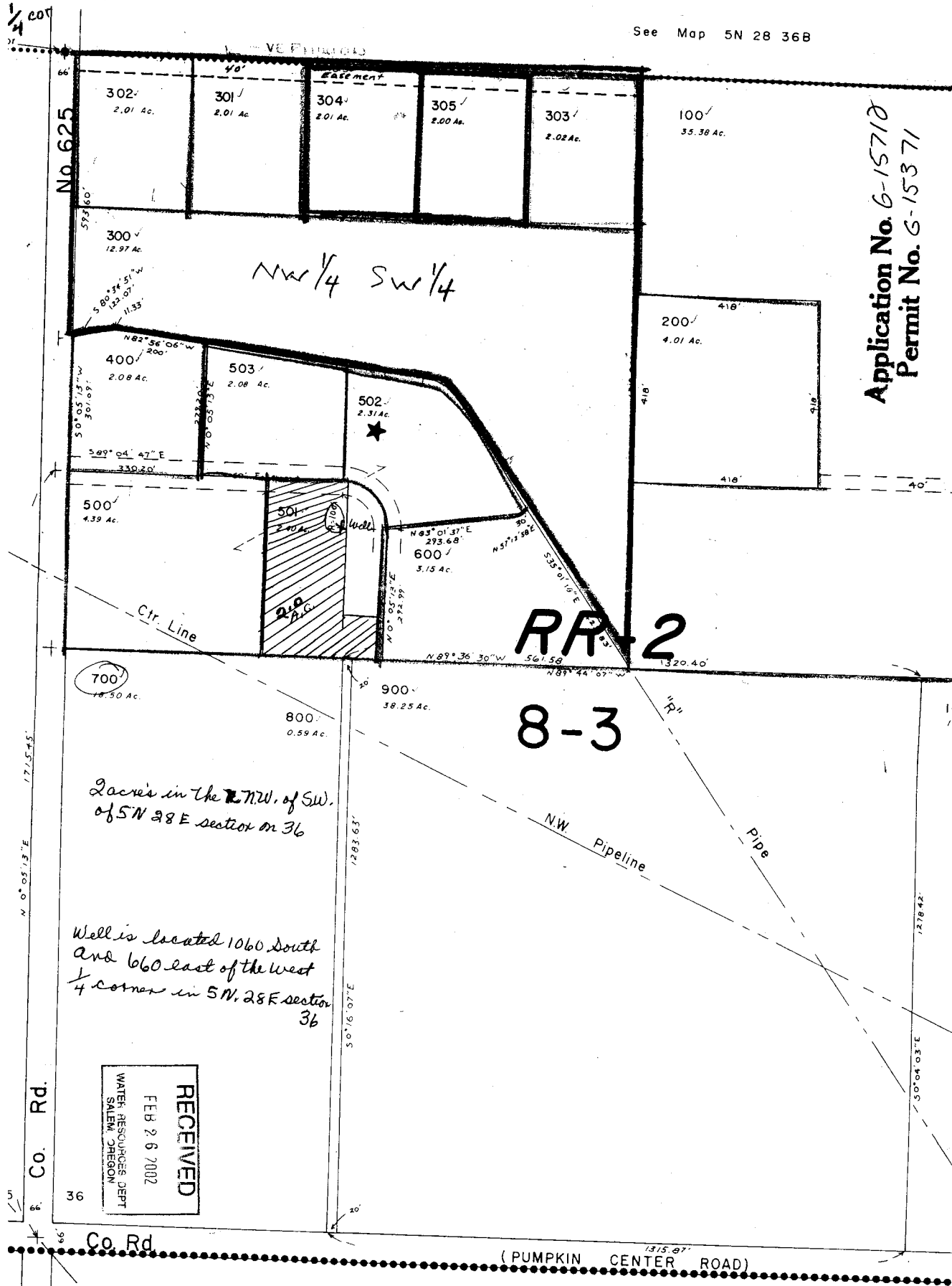


SW 1/4 Sec. 36 T.5N. R.28E.W.M.

UMATILLA COUNTY

1" = 200'

See Map 5N 28 36B



Application No. G-15710
Permit No. G-15371

700
18.50 Ac.

800
0.59 Ac.

900
38.25 Ac.

2 acres in the NW 1/4 of SW 1/4 of 5N 28 E section on 36

Well is located 1060 South and 660 East of the West 1/4 corner in 5N, 28E section 36

RECEIVED
FEB 26 2002
WATER RESOURCES DEPT
SALEM, OREGON

1/4 CO

No 625

N 0° 05' 13" E 1715.45'

Co. Rd.

Co. Rd.

(PUMPKIN CENTER ROAD)

RR-2

8-3

5

66

99

20'

S 0° 16' 07" E 1283.63'

1283.63'

90'

N 0° 05' 13" E 3010.09'

N 70° 05' 13" E 322.46'

S 73° 16' 0" E 573.60'

66'

40'

40'

40'

40'

40'

40'

40'

40'

40'

40'

40'

40'

40'

40'

40'

40'

40'

40'

40'

40'

40'

40'

40'

40'

40'

40'

40'

40'

40'

40'

40'

40'

40'

40'

40'

40'

40'

40'

40'

40'

40'

40'

40'

40'

40'

40'

40'

40'

40'

40'

40'

40'

40'

40'

40'

40'

1278.42'

S 0° 04' 03" E 3070.03'

1315.87'