

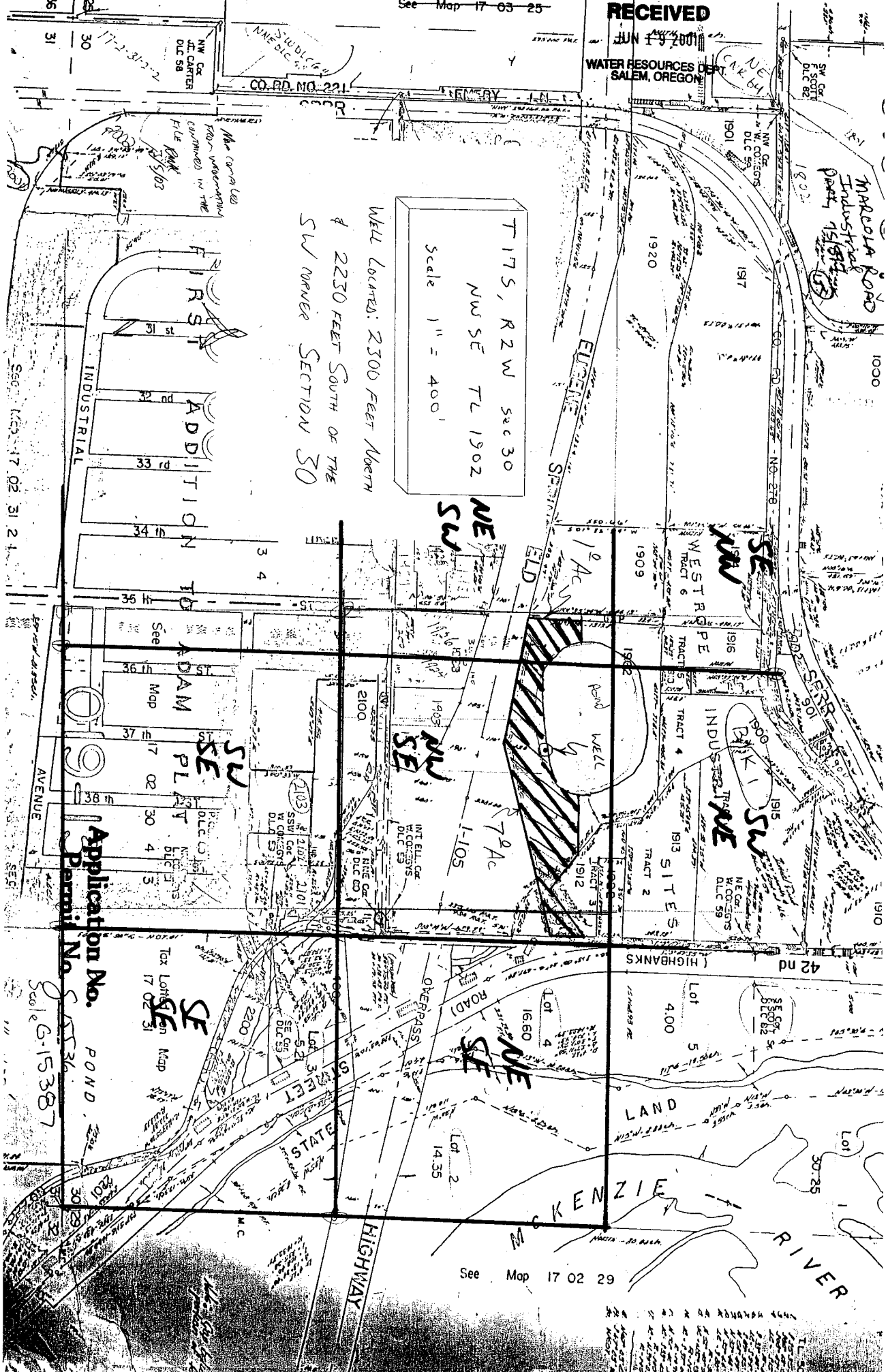
See Map 17 03 25 4 4

T 17 S, R 2 W SEC 30

NW SE TL 1902
See Map 17 03 25

RECEIVED
JUN 1 1981

WATER RESOURCES DEPT
SALEM, OREGON



Application No. POND
Permit No. 6-15387

Scale 6-15387

See Map 17 02 29