

38S. R2W. W.M.P.
ION COUNTY G-15390

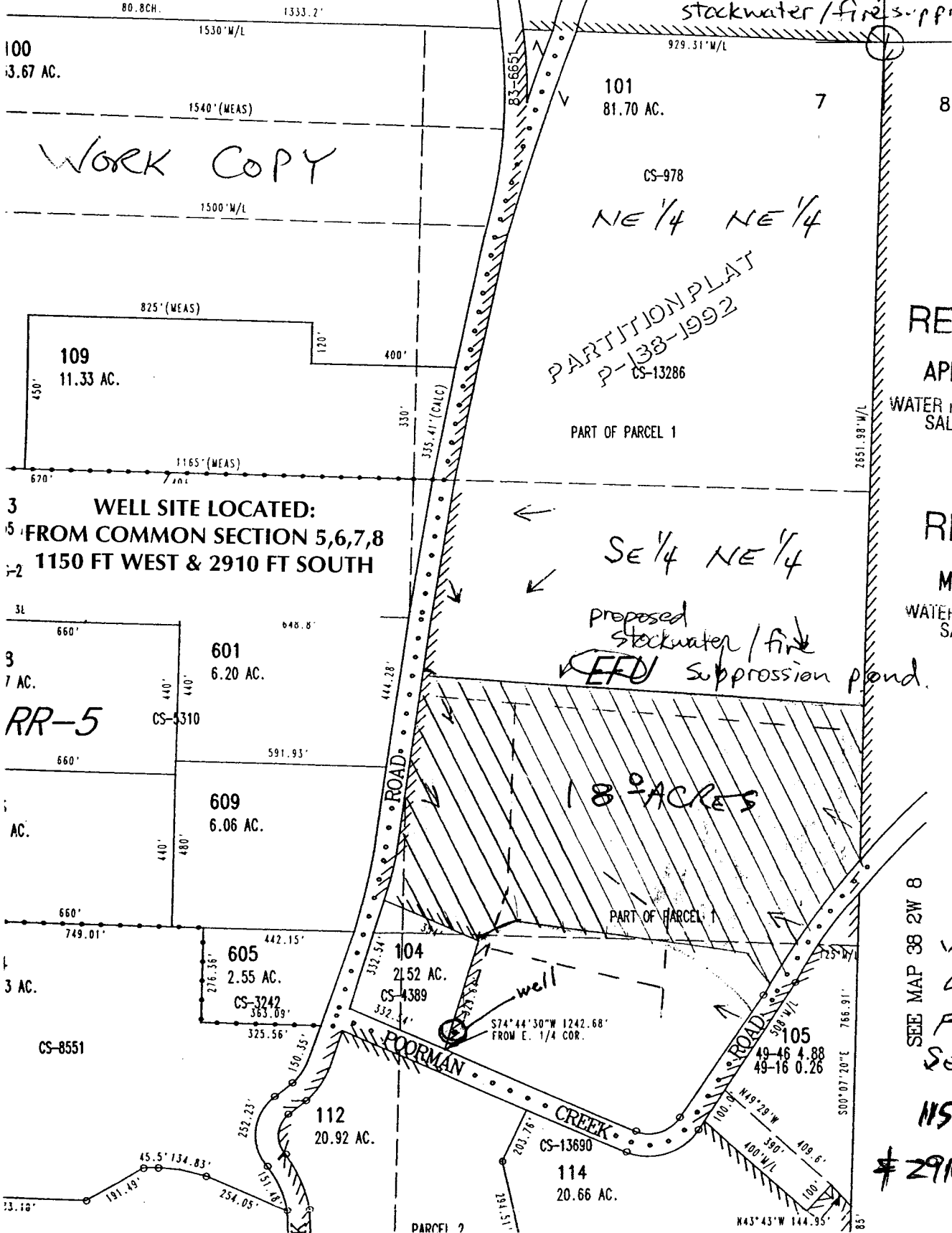
Application No. G-15776
Permit No. Subject well is 15' east of the
sw corner boundary. 31' north of
the sw corner pin and 3198' sw
of the ne corner pin in section 7
→ = slope of land
--- = Proposed 18 ac irrigated

1" = 400'
APPROX.



MAP 38 2W 6

CANCELLED
106
110
111
607
KILLED 115 IN



WORK COPY

PARTITION PLAT
P-138-1992
CS-13286

RECEIVED
APR 16 2002
WATER RESOURCES DEPT.
SALEM, OREGON

RECEIVED
MAR 29 2002
WATER RESOURCES DEPT.
SALEM, OREGON

WELL SITE LOCATED:
FROM COMMON SECTION 5, 6, 7, 8
1150 FT WEST & 2910 FT SOUTH

SEE MAP 38 2W 8
WELL SITE
LOCATED:
FROM COMMON
SECTIONS 5, 6, 7, 8.
1150 FT WEST
& 2910 FT. SOUTH

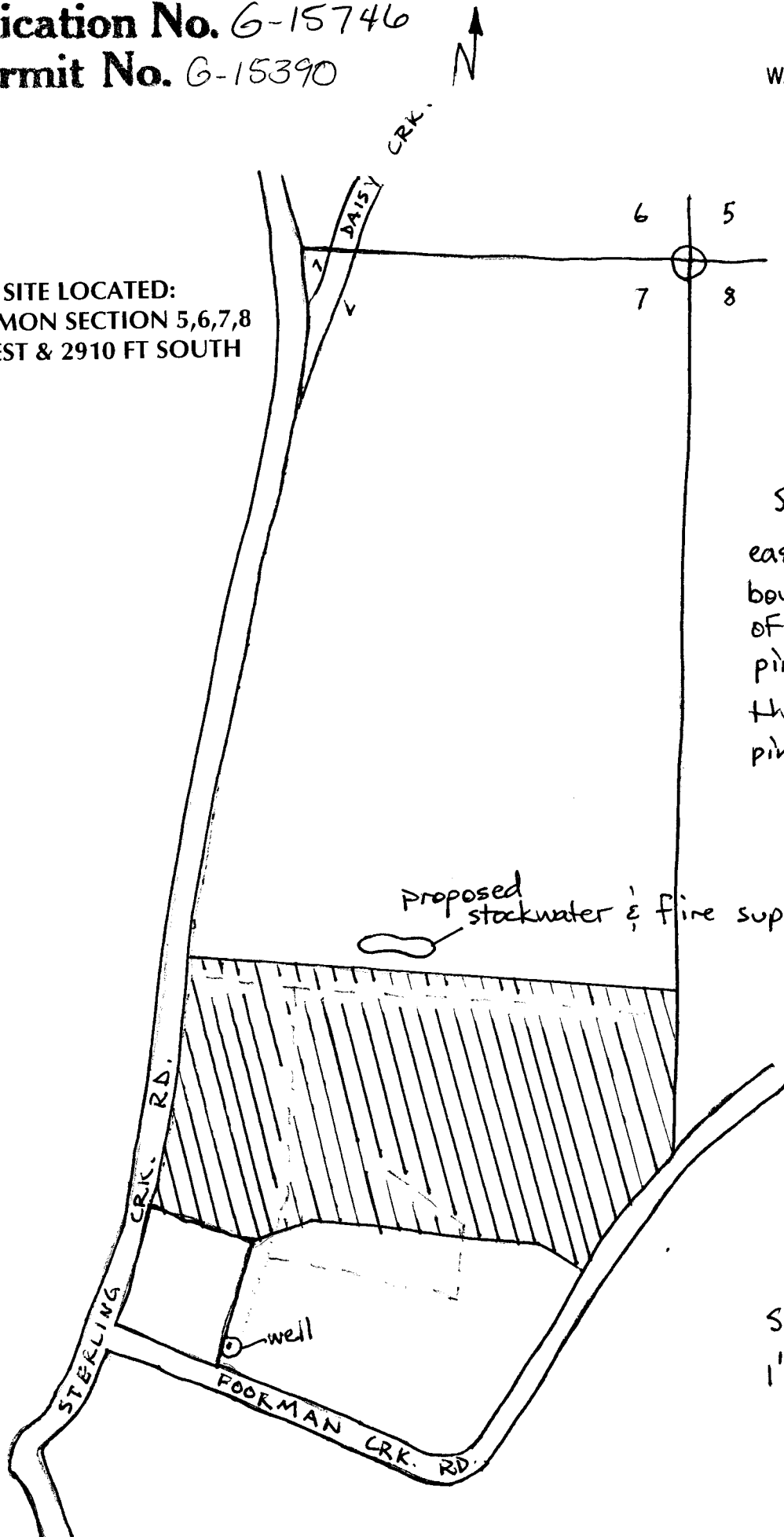
Application No. G-15746
Permit No. G-15390

RECEIVED

APR 16 2002

WATER RESOURCES DEPT.
SALEM, OREGON

WELL SITE LOCATED:
FROM COMMON SECTION 5,6,7,8
1150 FT WEST & 2910 FT SOUTH



Subject well is 15'
east of sw corner
boundary. 31' north
of the sw corner
pin. 3198' sw of
the ne corner
pin in section 7.

Scale:
1" = 400'