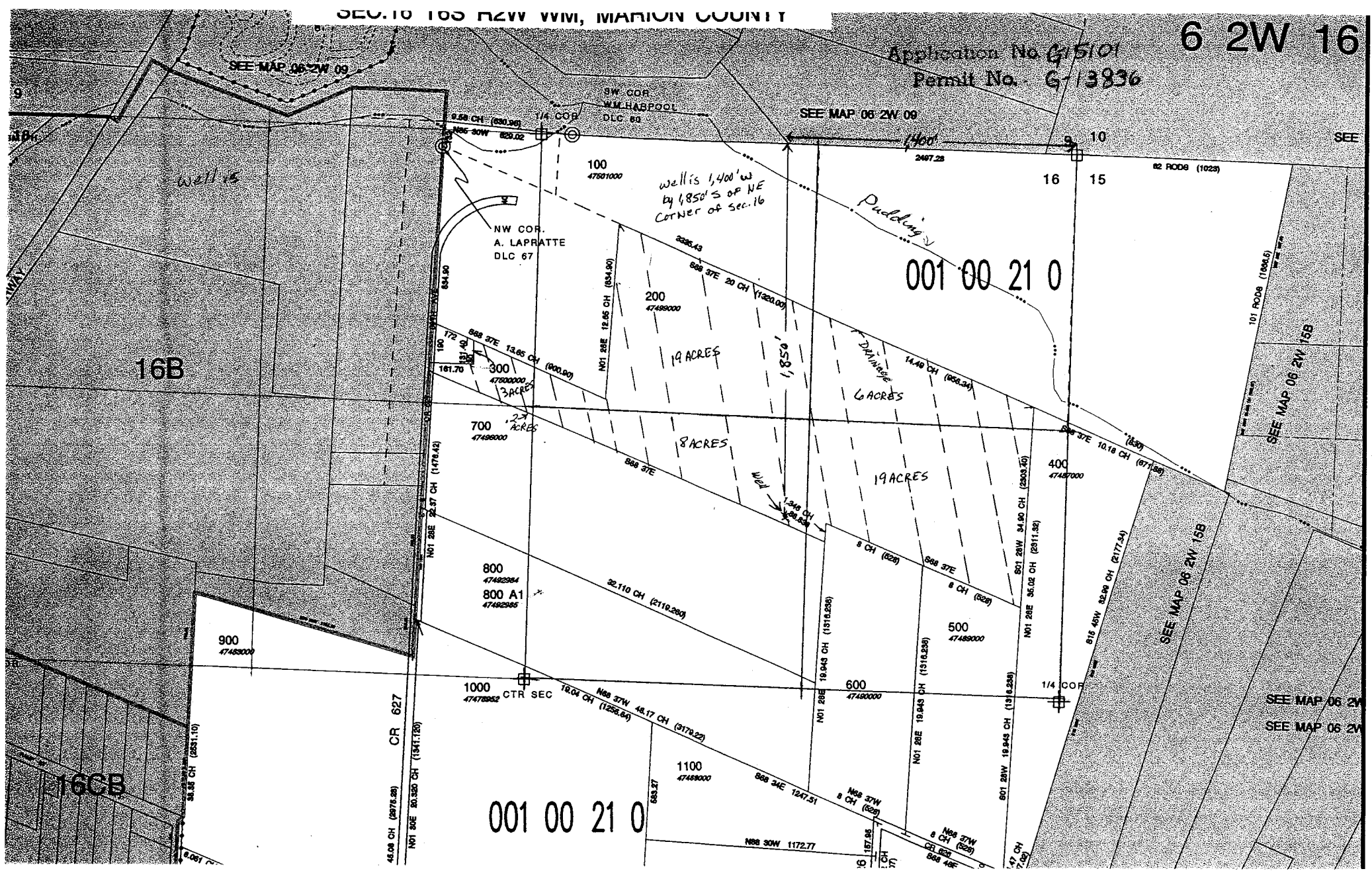


Application No. G-15101  
Permit No. G-13836



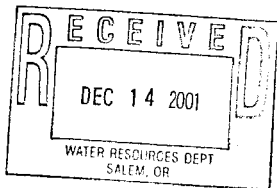
SEE MAP 06 2W 10

SE COR  
WM. HARPOOL  
DLC 60

1/4 COR

1325.30

1361.10



OT 1  
92 AC

NOTE - THIS AREA ASSESSED WITH  
TAXLOT 201 ON MAP 06-2W-15A

Reg # 3261  
Certificate # 3034

12.5 ACRES

4 ACRES

4 ACRES

12.0 ACRES

001 00 21 0

SEE MAP 06 2W 15A

NOTE - THIS AREA ASSESSED WITH  
TAXLOT 300 ON MAP 06-2W-15A

LOT 3  
20.36 AC

NOTE - THIS AREA ASSESSED  
WITH TAXLOT 500 ON MAP  
06-2W-15A

C/L JONES DITCH

NOTE - THIS AREA ASSESSED WITH  
TAXLOT 800 ON MAP 06-2W-15C  
824 40W 32.78 CH (2182.18)

NOTE - THIS AREA ASSESSED WITH  
TAXLOT 800 ON MAP 06-2W-15C  
32.78 CH (2182.18)  
33 CH (2178)

NOTE - THIS AREA ASSESSED WITH  
TAXLOT 400 ON MAP 06-2W-15C  
33 CH (2178)

SEE MAP 06 2W 15A

CTR SEC

SEE MAP 06 2W 15A

SEE MAP 06 2W 15C

NE COR  
A. LAPHATTE  
DLC NO 87

6 2W 1

DEC 10 2001

Cancelled  
900  
1100

SEE MAP 06 2W 10D

STRATFORD DRIVE NE

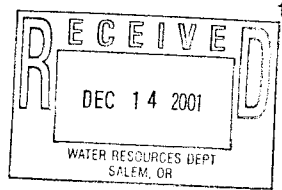
CR 624

10

11

30

23.307 CH (1538.282)



15

14

30

STR

NOTE - THIS AREA ASSESSED WITH  
TAXLOT 100 ON MAP 06-2W-14

AVE

23.22 CH (1532.52)

(1001.07)

NE

800 00 09E (719.62)

CR 624

SEE MAP 06 2W 14

001 00 21 0

NOTE - REMAINDER OF THIS  
PARCEL ON MAP 06-2W-15D

S89 53 00E  
5.02 CH (331.32)

1000  
47459000

800 00 09E (688.75)  
11.862 CH (788.852)

11.862 CH (788.852)

1/4 COR

40

(331.32)  
5.02 CH

SEE MAP 06 2W 15D

6 2W 15A



# LINE TYPES

AX LOT BOUNDARY	OLD PROPERTY LINE
DAD RIGHT-OF-WAY	VACATED RIGHT-OF-WAY
RAILROAD	RAILROAD RIGHT-OF-WAY
REAM, LAKE, ETC. X LOT BOUNDARY	STREAM, LAKE, ETC. NON-BOUNDARY
BDIVISION BOUNDARY	PARTITION PLAT BDY.
AX CODE BOUNDARY	EASEMENT

## SYMBOL TYPES

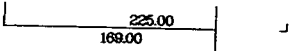
D.L.C.		
CONTROL POINTS		
SURVEY MONUMENTS		
G.L.O. CORNERS		
ON	1/4 SEC	1/16 SEC
0		1/16 COR
5		

## NUMBERS

TAX CODE NO.  
000 00 00 0

ACREAGE - ALL ACREAGES EXCLUDE  
ANY PORTION THAT MAY LIE  
WITHIN THE INDICATED PUBLIC  
RIGHT OF WAYS.

TICK MARKS - WHEN A TICK MARK IS  
INDICATED ON THE EXTENSION OF  
A LINE, THEN THE DIMENSION GOES  
TO THE TICK MARK. GENERALLY THIS  
IS USED WHEN DIMENSIONS GO INTO  
PUBLIC RIGHT OF WAYS.



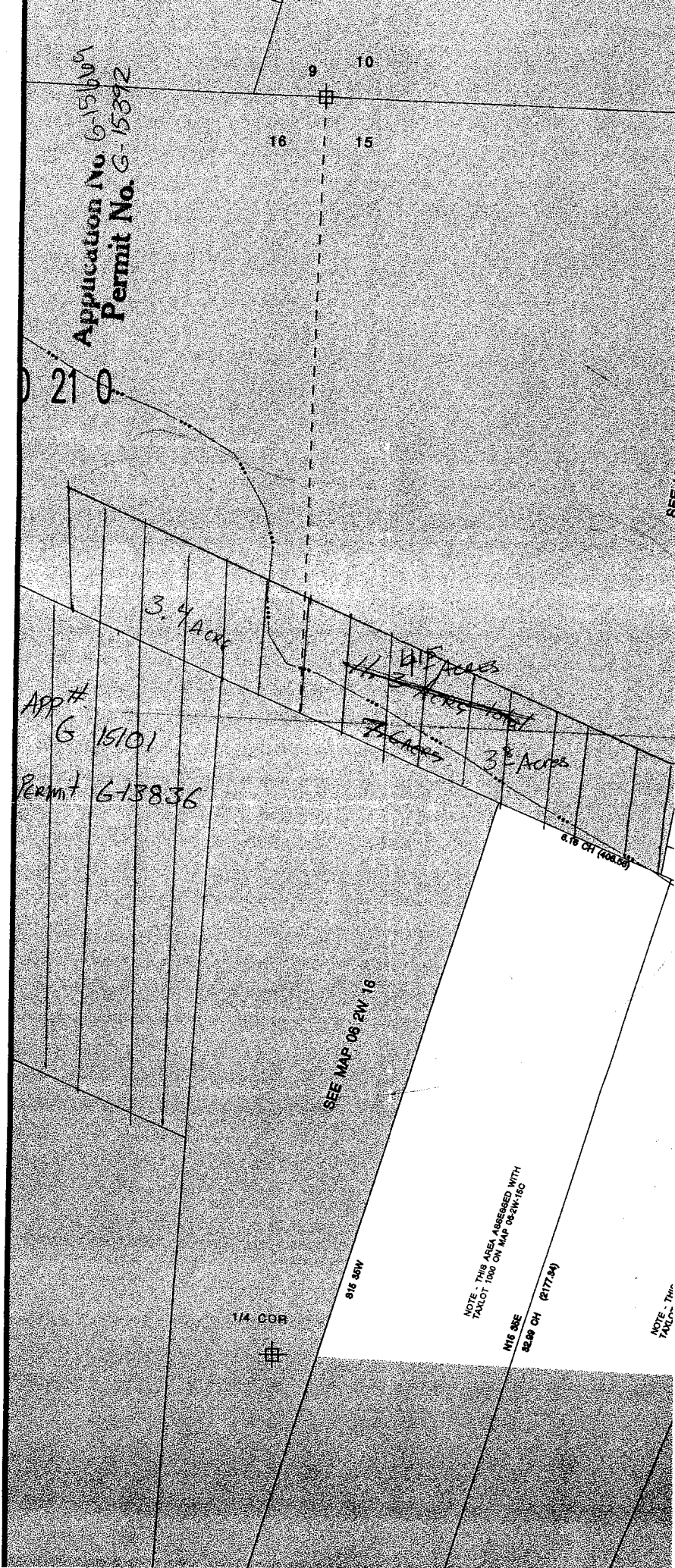
ARROWS ARE USED WITH DIMENSIONS  
IN AREAS OF GREATER COMPLEXITY.

NOTICE: This map was  
created for Assessor's  
Office use ONLY.



SCALE 1" = 200'  
or 1:2400

file created: January 20, 1998



## NE

