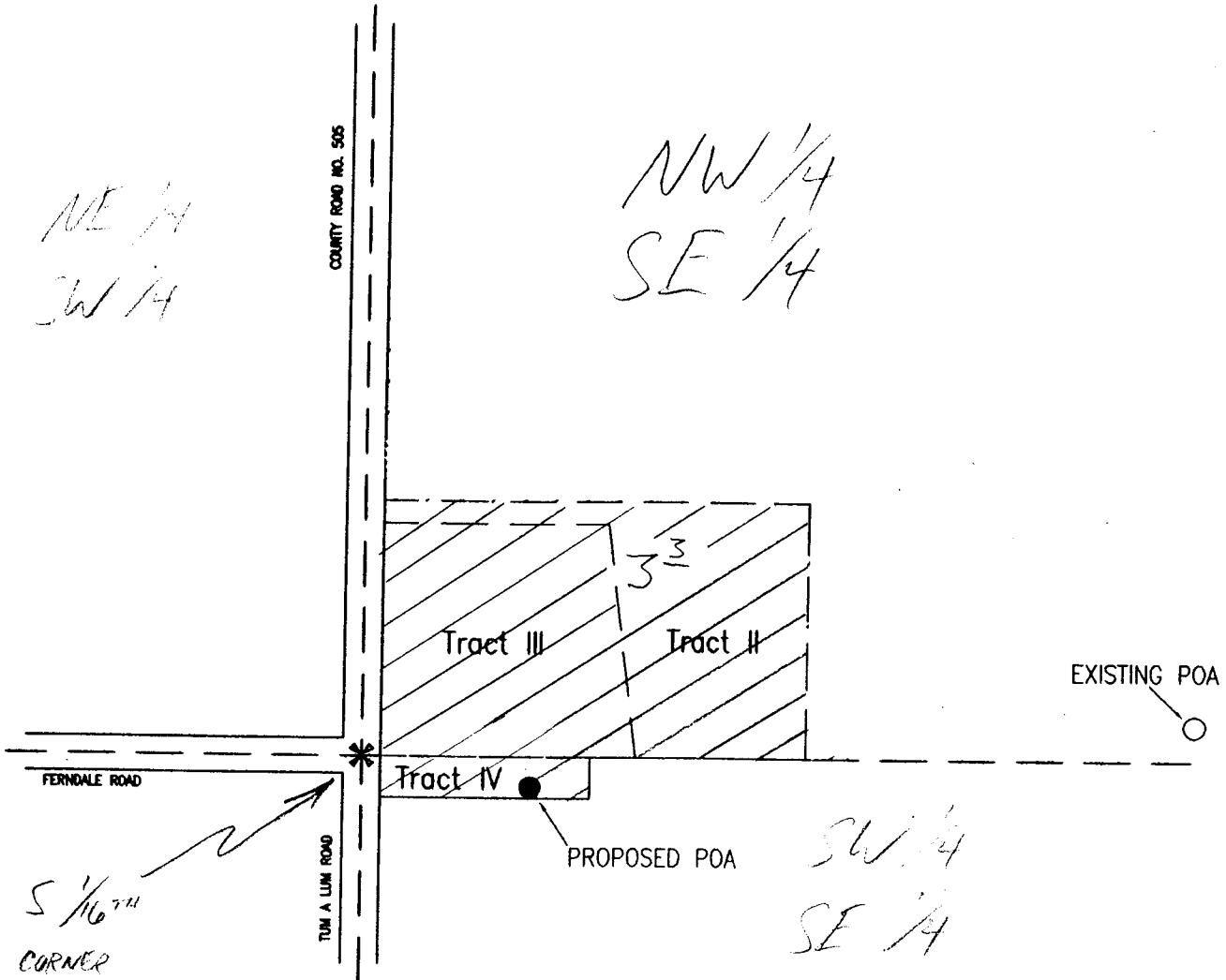


T6N, R35, S24, WM



✱ SW corner of NW1/4 of SE1/4 of Section 24, Township 6 North, Range 35, WM

● PROPOSED POA is located 183' East, 35' South of SW corner of NW1/4 of SE1/4 of Section 24, Township 6 North, Range 35, WM



SCALE: 1 in = 200 ft



app # G-14936  
Permit # G-15403

Map compiled from information in the file depicts the remaining acres not covered by prior H<sub>2</sub>O rights which are requested under application G-14936