

V
V

BOOTH - 10

Wells Loc:

- #1 - 350 feet N & 1300 feet west from the SE corner Section 6
- #2 - 350 feet N & 2600 feet west from the SE corner Section 6
- #3 - 600 feet South and 2600 feet West from the SE corner Section 6
- #4 - 1300 feet South and 2700 feet west from the SE corner Section 6
- #5 - 2000 feet South and 300 feet west from the

Well #6 - 3900 feet South and 3200 feet West from the SE corner of Section T41 S, R12 E, W. 11

RECEIVED

JUN 28 2001

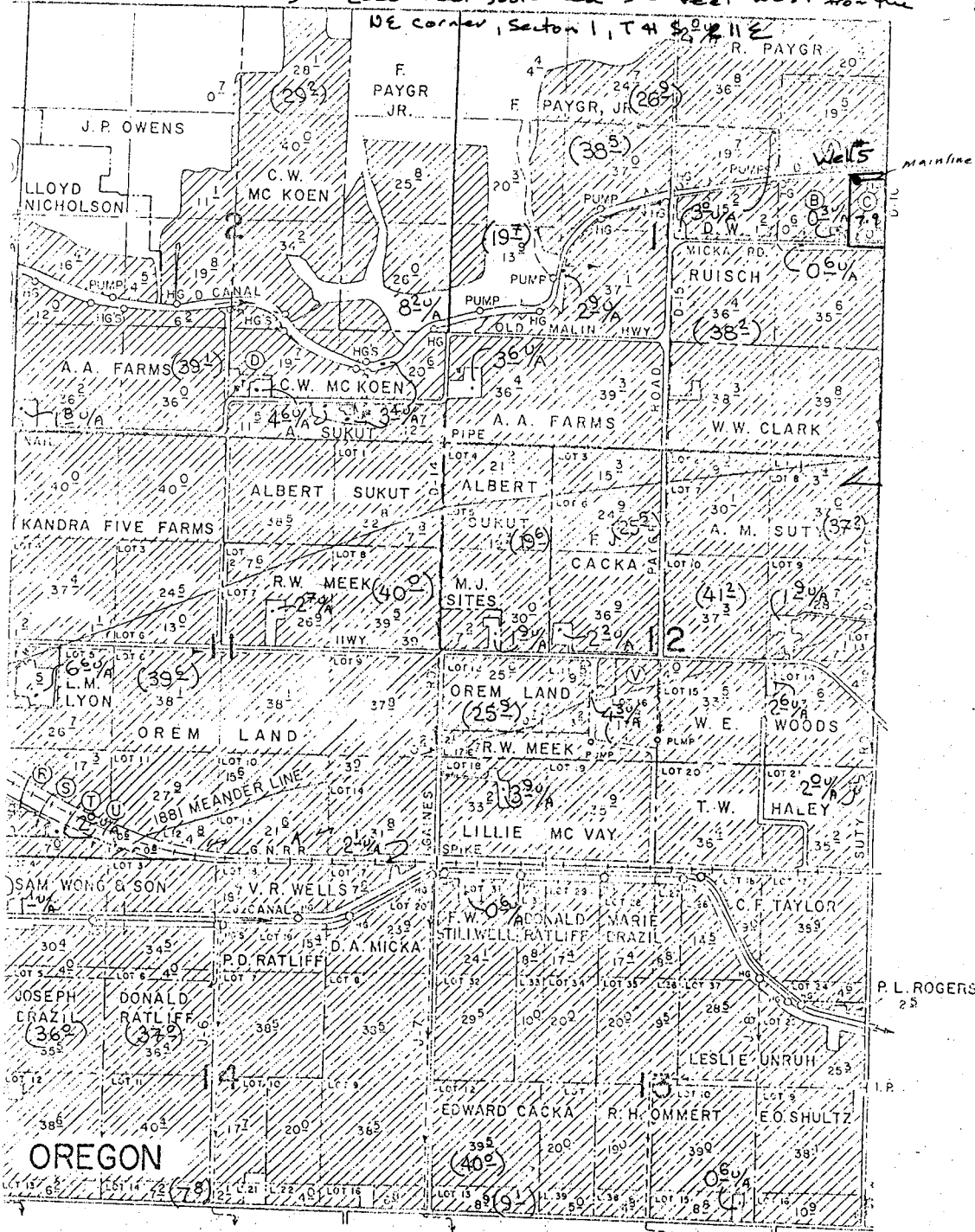
WATER RESOURCES DEPT. SALEM, OREGON

WATER RESOURCES DEPT. SALEM, OREGON

RECEIVED
FEB 14 2002

WATER RESOURCES DEPT. SALEM, OREGON

RECEIVED
FEB 14 2002



CALIFORNIA

Application No 9,550
Permit No. G-15407

(34.5) Indicates corrected acreage for the area
34.5 u/a Indicates unirrigated acreage under contract

T41 S R 12 E

- © R. T. PARKER 8⁸
- © K. S. GENTRY 7⁰
- © RUBY GORDON 12³
- © A. J. PRESCOTT 1⁷
- © JOHN GUTHRIE 6³

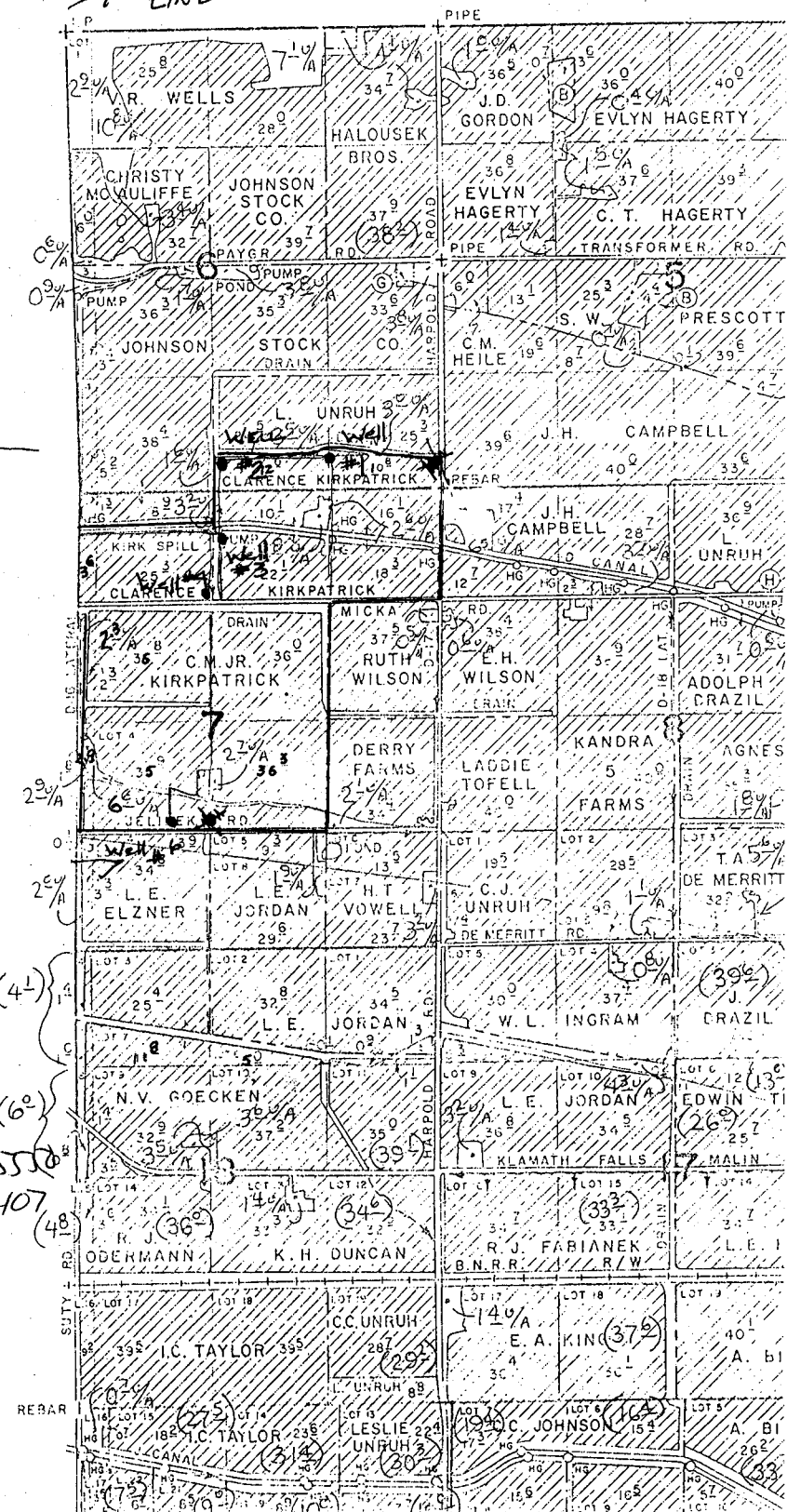
RECEIVED

JUN 28 2001

WATER RESOURCES DEPT.
SALEM, OREGON

MATCH
LINE

Mainlines



RECEIVED
 FEB 14 2002
 WATER RESOURCES DEPT.
 SALEM, OREGON

Application No. 95550
 Permit No. G. 15407

(4L)
 (6°)
 (36°)
 (34°)
 (33°)
 (37°)
 (39°)
 (33°)
 (37°)
 (39°)