

THIS MAP WAS PREPARED FOR
ASSESSMENT PURPOSE ONLY

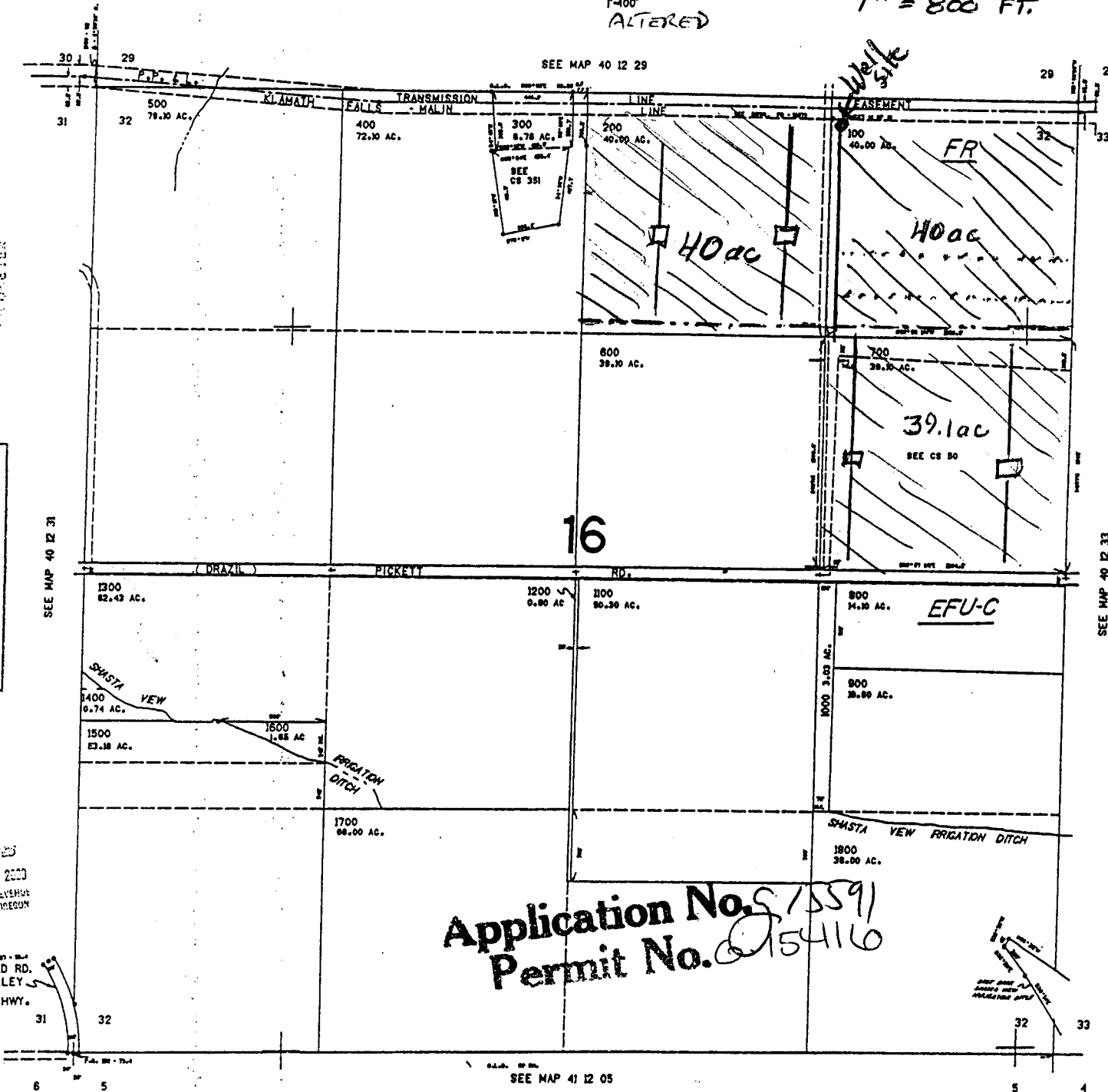
SECTION 32 T.40S. R.12E. W.M.
KLAMATH COUNTY

TRUE MAP SCALE
1" = 800 FT.

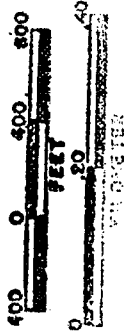
40 12 32

1"=400'
ALTERED

SEE MAP 40 12 29



SCALE 1:8000



- |||| Supplementary Use (To SVID & KB 10)
- 10" AI mainline
- - - 8" AI mainline
- · · 6" AI mainline
- Wheel line
- · · Solid set lateral

WELL LOCATED
1280 FT. WEST &
100 FT. SOUTH
FROM COMMON
SECTION CORNER
28, 29, 32, 33

Application No. 515591
Permit No. 0154110

SEE MAP 41 12 05

141000

40 12 32

RECEIVED
AUG 21 2001
WATER RESOURCES DEPT
SALEM, OREGON

RECEIVED
NOV 13 2000
DEPT. OF REVENUE
STATE OF OREGON

HARPOLD RD.
POE - VALLEY
- MALIN HWY.