

Ground Water Application

Gerald & Mary Gould
Township 40 South, Range 19 East, WM.

map 1 of 2

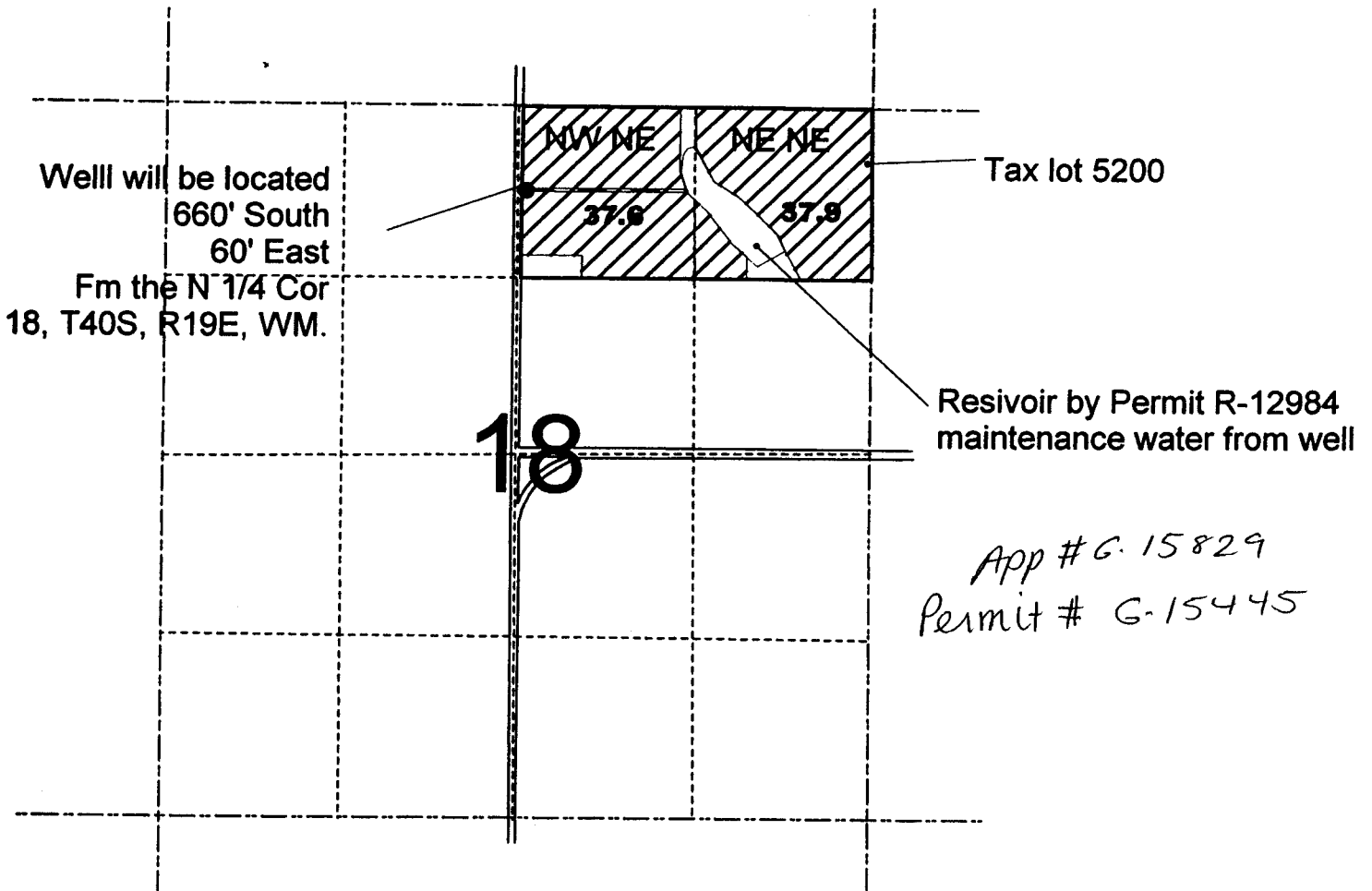
RECEIVED

AUG 16 2002

WATER RESOURCES DEPT.
SALEM, OREGON

For supplemental Irrigation and reservoir maintenance

Some corrected - Cor



App # G-15829
Permit # G-15445

transported from well
by 6" pipeline

Map 2 of 2

Ground Water Application

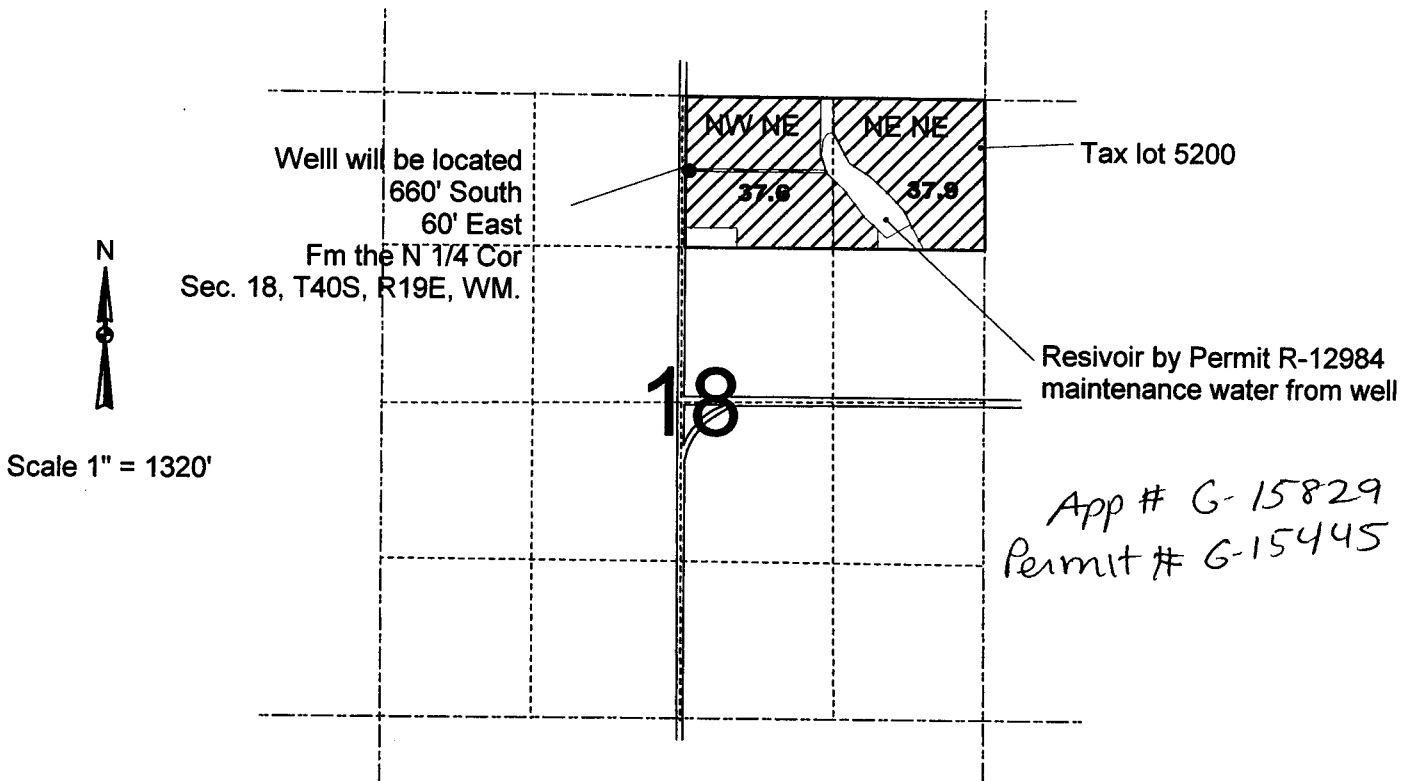
Gerald & Mary Gould
Township 40 South, Range 19 East, WM.

For supplemental Irrigation and reservoir maintenance

RECEIVED

AUG 16 2002

WATER RESOURCES DEPT.
SALEM, OREGON



Water will be transported from well
to reservoir by 6" pipeline

Drawn by
Hollie Cannon
Water Right Solutions, LLC
2779 Camp Baker RD
Medford, OR 97501
541-512-1159