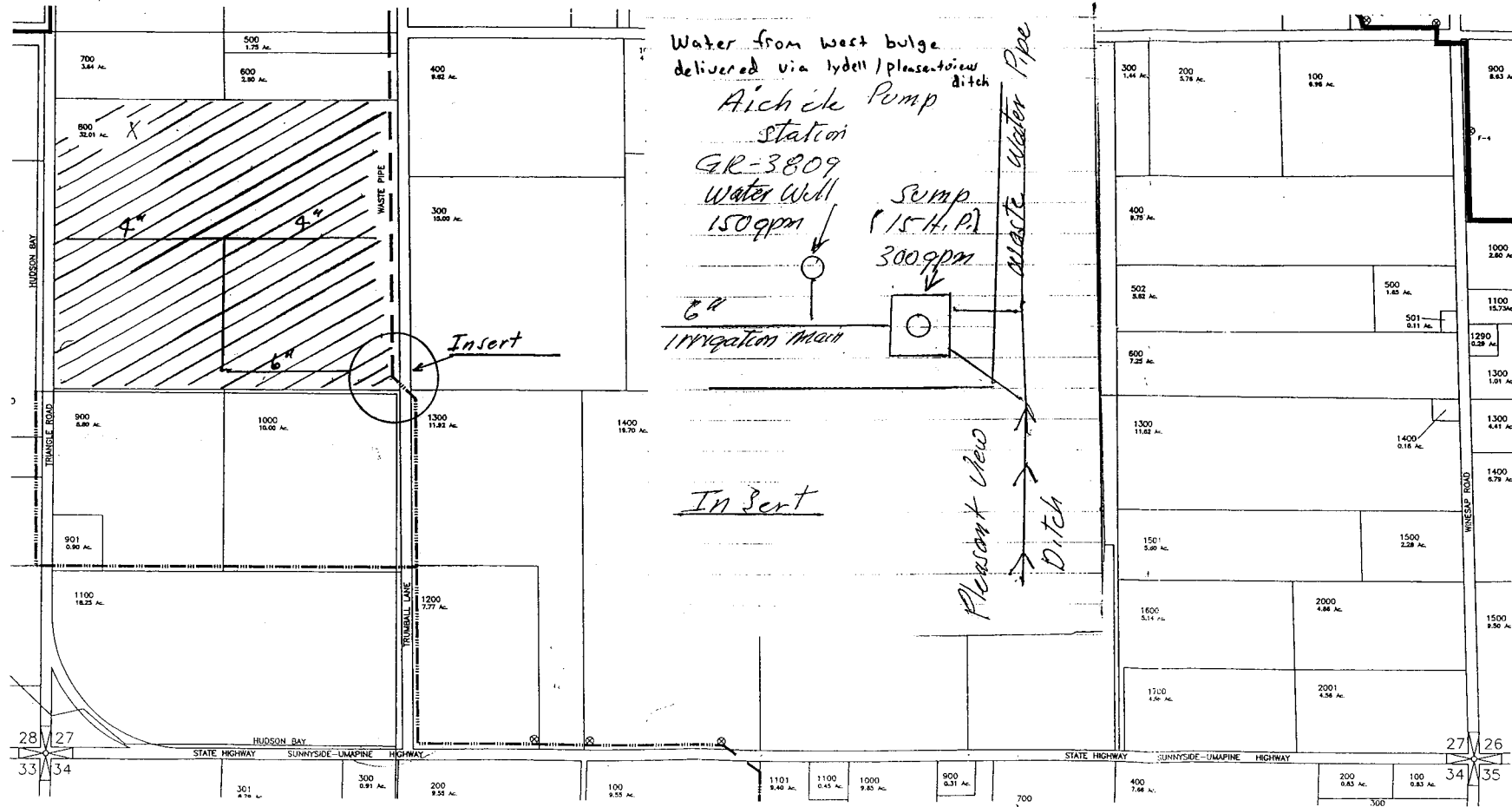


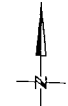
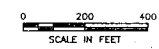
SOUTH 1/2 SECTION 27  
TOWNSHIP 6 NORTH, RANGE 35 EAST, W.M.

Application No. 915755  
Permit No. 6-15458



3x  
1700  
400  
200

RECEIVED  
APR 29 2002  
WATER RESOURCES DEPT.  
SALEM, OREGON



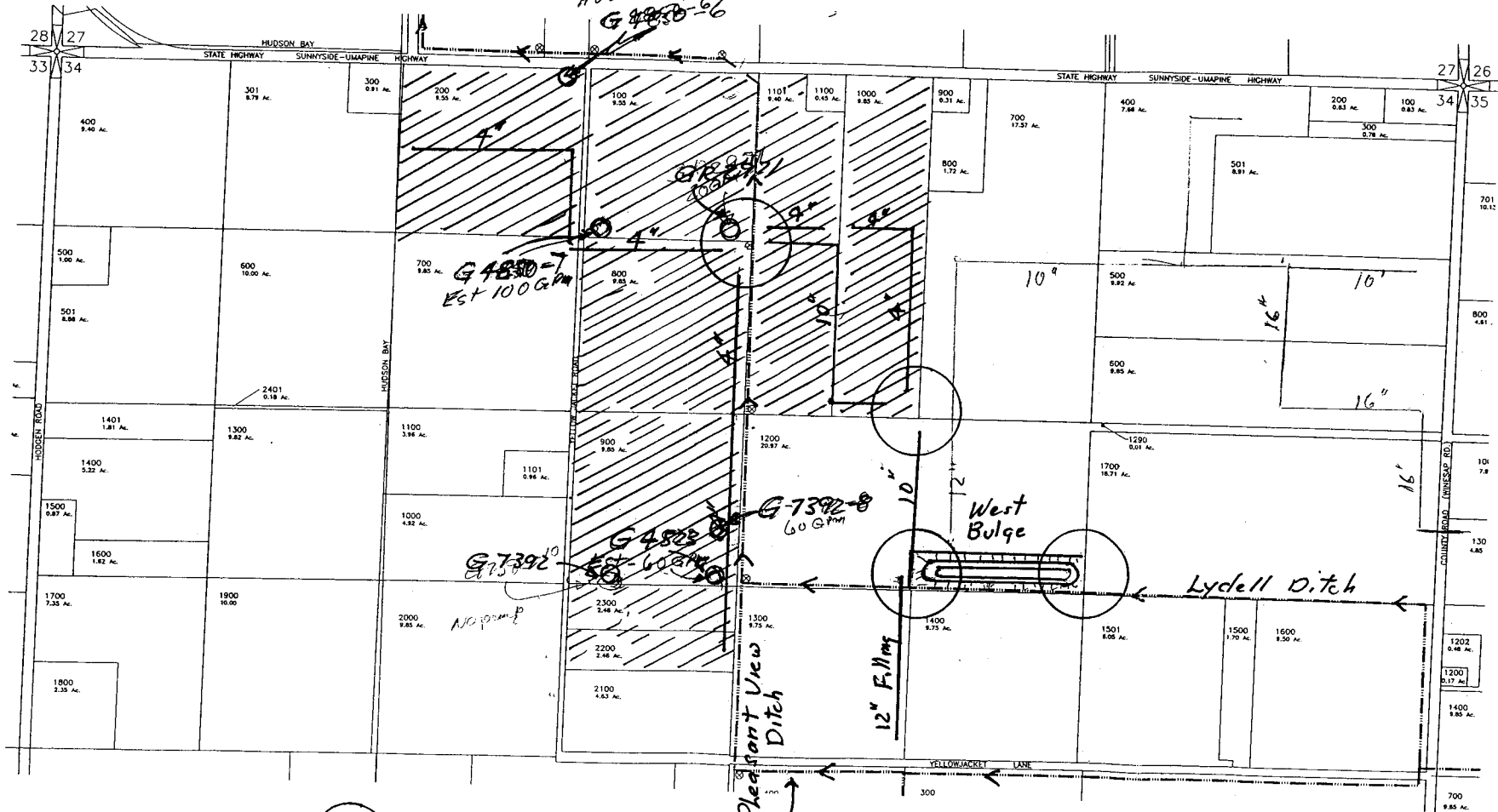
WALLA WALLA RIVER IRRIGATION DISTRICT

DWG 27S  
SCM Consultants, Inc. Architects & Engineers  
Kennewick, WA 99336  
4376.015 4376-27S.DWG  
Drawing 1

11/29/00

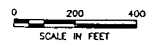
NORTH 1/2 SECTION 34  
TOWNSHIP 6 NORTH, RANGE 35 EAST, W.M.

Application No. 915755  
Permit No. G-15450



See Drawing # For Details

RECEIVED  
APR 29 2002  
WATER RESOURCES DEPT.  
SALEM, OREGON

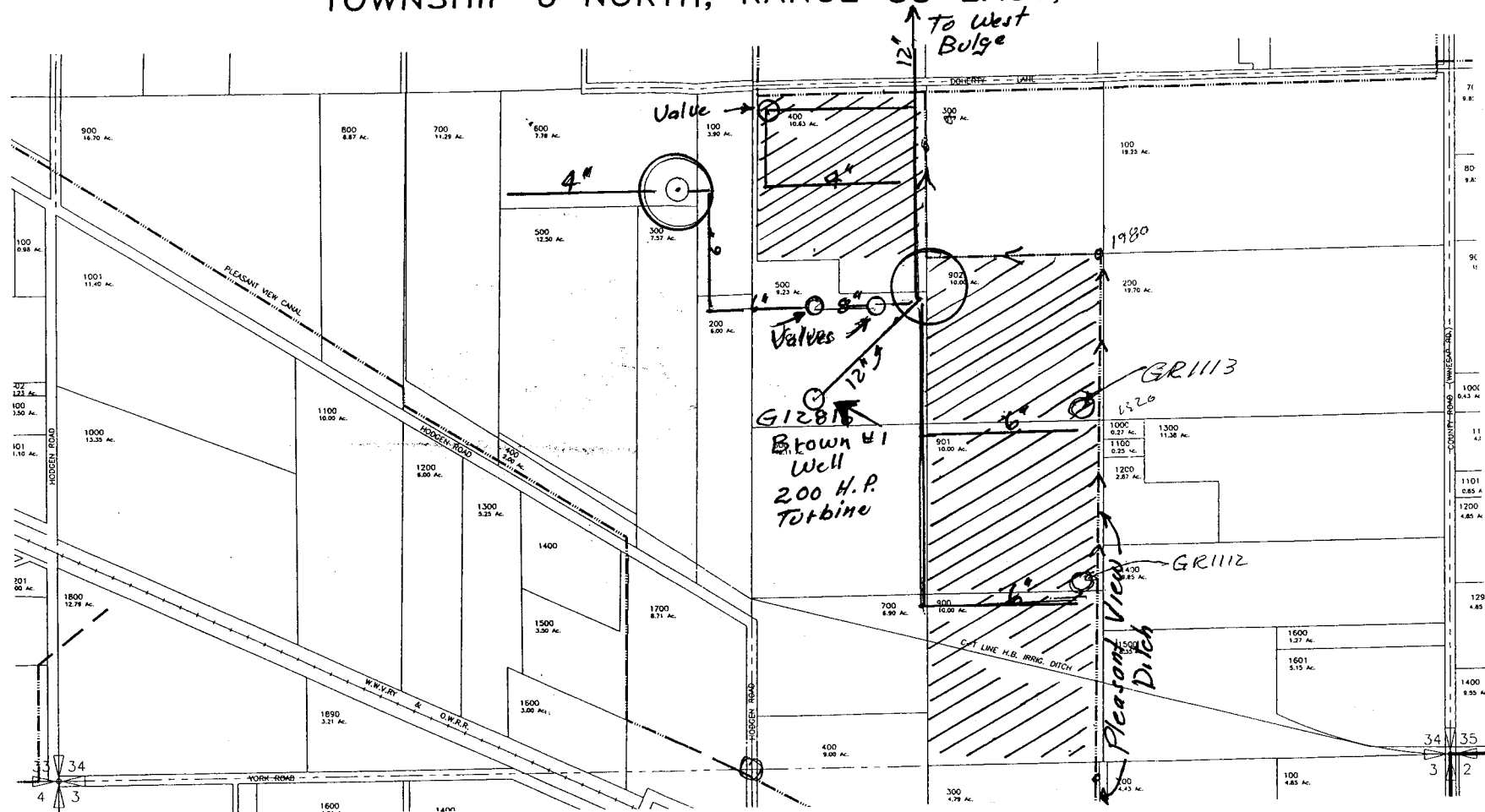


WALLA WALLA RIVER IRRIGATION DISTRICT

DWG 34N Drawing # 2  
SCM Architects & Engineers  
Kennewick, WA 99336  
4376.015 4376-34N.DWG 11/29/00

Application No. 915755  
Permit No. 6-154501

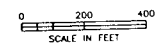
# SOUTH 1/2 SECTION 34 TOWNSHIP 6 NORTH, RANGE 35 EAST, W.M.



RECEIVED

APR 29 2002

WATER RESOURCES DEPT.  
SALEM, OREGON



DWG 34S

Drawing #3

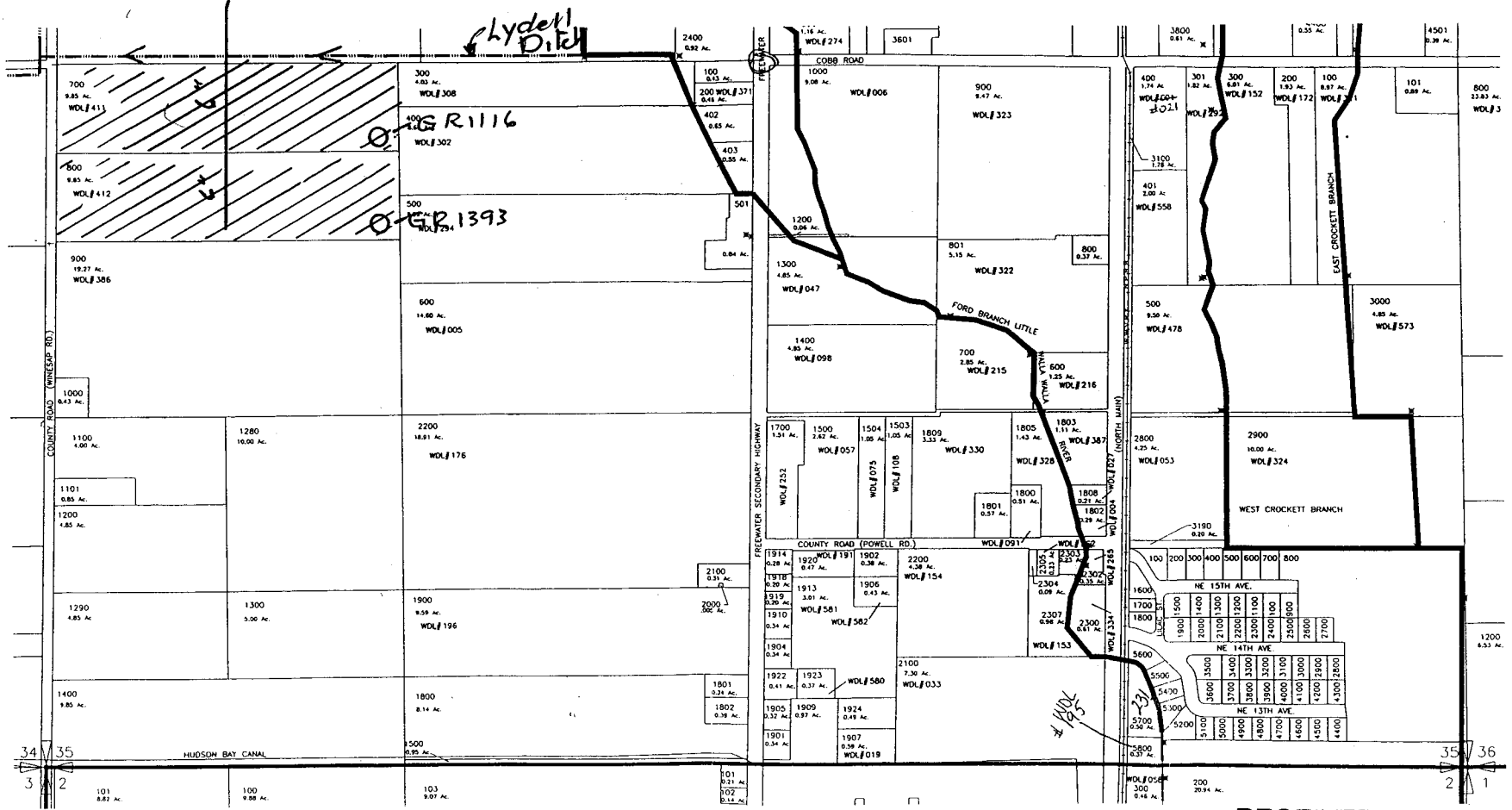
WALLA WALLA RIVER IRRIGATION DISTRICT

4376.015

4376-34S.DWG

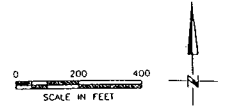
SOUTH 1/2 SECTION 35  
TOWNSHIP 6 NORTH, RANGE 35 EAST, W.M.

Application No. 915755  
Permit No. 6-15450



P.O.D. IS LOCATED  
1300' EAST AND 2220' SOUTH  
FROM THE COMMON SECTION  
CORNERS 26,27,34,35

RECEIVED  
APR 29 2002  
WATER RESOURCES DEPT.  
SALEM, OREGON

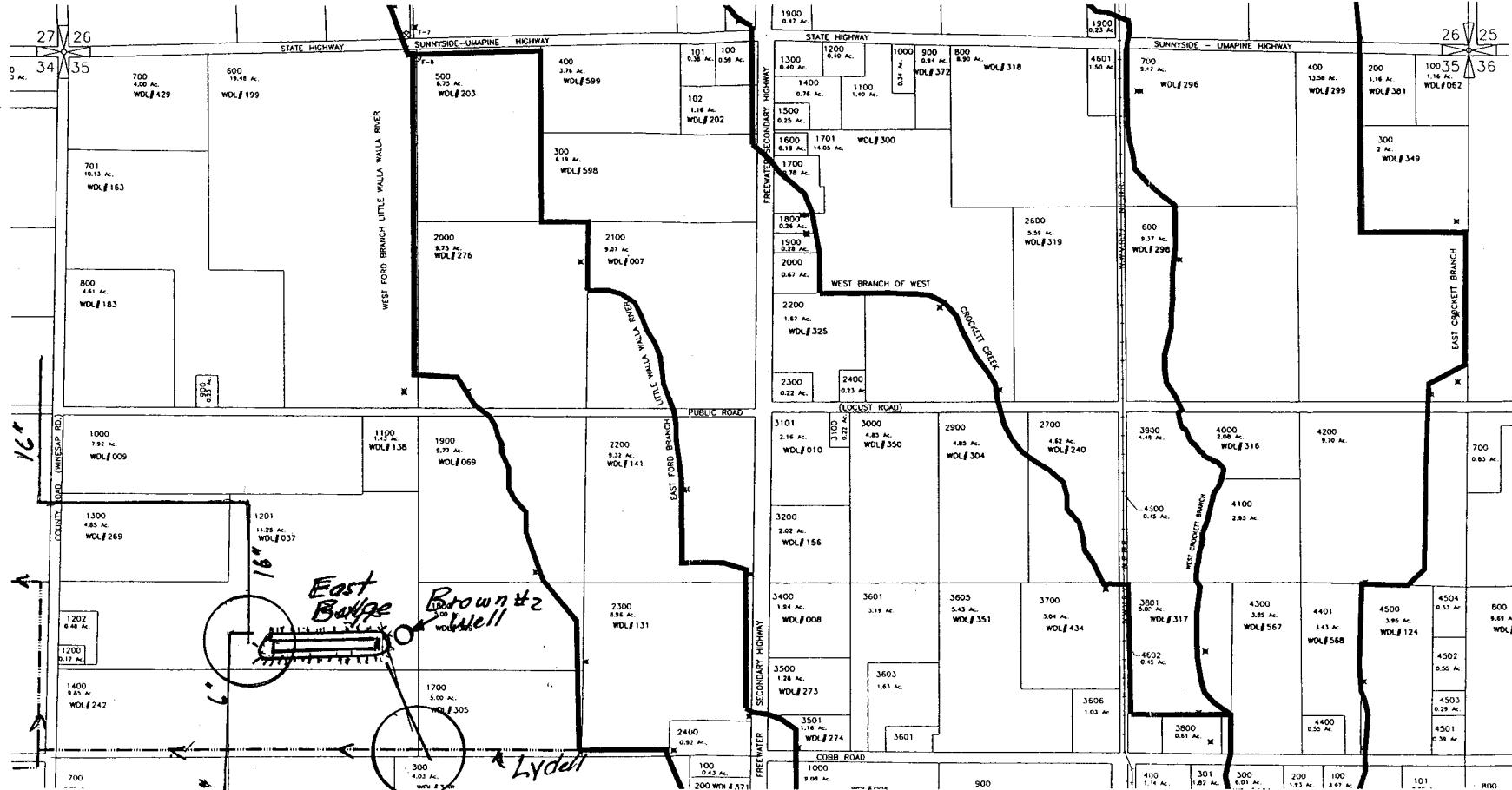


WALLA WALLA RIVER IRRIGATION DISTRICT

DWG 35S Drawing # #  
SCM Consultants, Inc. Architects & Engineers  
Pawnee, WA 99236  
4376.015 4376-35S.DWG 01/02/02

# NORTH 1/2 SECTION 35 TOWNSHIP 6 NORTH, RANGE 35 EAST, W.M.

Application No. 215755  
Permit No. 6-15450

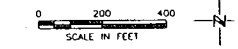


P.O.D. IS LOCATED  
1300' EAST AND 2220' SOUTH  
FROM THE COMMON SECTION  
CORNERS 26,27,34,35

RECEIVED

APR 29 2002

WATER RESOURCES DEPT.  
SALEM, OREGON  
DWG 35N



*Drawing # 5*

WALLA WALLA RIVER IRRIGATION DISTRICT

SCM Architects & Engineers  
Lancaster, WA 98550  
4376.015 4376-35N.DWG

01/02/0