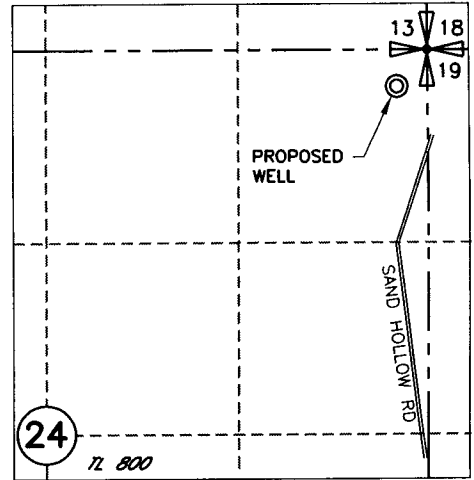
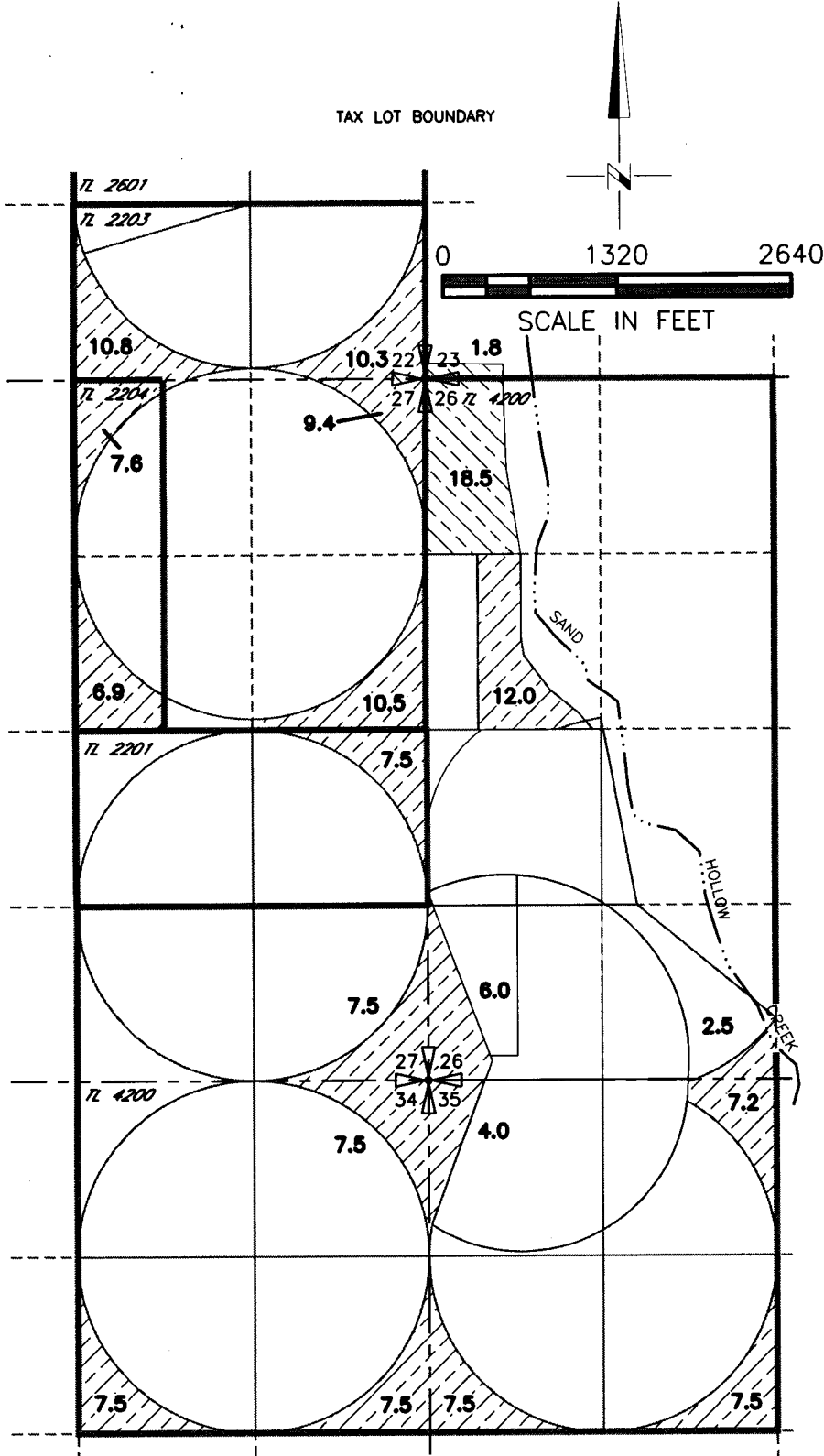


TURNER RANCH INC. WATER RIGHTS APPLICATION MAP RECEIVED T1N, R26E WM

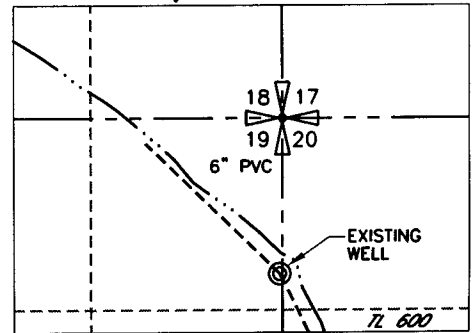
JAN 09 2003

WATER RESOURCES DEPT.
SALEM, OREGON

T1S, R26E WM



T1S, R27E WM



POINTS OF APPROPRIATION

PROPOSED WELL #1 250' SOUTH AND 210' WEST FROM THE NE CORNER SECTION 24

EXISTING WELL #2 1070' SOUTH AND 20' WEST FROM THE NE CORNER SECTION 19



PRIMARY IRRIGATION



SUPPLEMENTAL TO
PERMIT 49228
CERTIFICATE 62415

160.0 TOTAL IRRIGATED ACRES

NOTE:
THE PURPOSE OF THIS MAP IS TO IDENTIFY THE APPROXIMATE LOCATION OF THE WATER RIGHT. IT IS NOT INTENDED TO PROVIDE INFORMATION RELATIVE TO THE LOCATION OF PROPERTY OWNERSHIP BOUNDARY LINES.

app# G-15908
Permit # G-15464

DRAWING: H:\CAD\AG\3522\074\35222003.dwg
PRINTED BY: rogerw on 01/02/03 12:32 PM

SCM Consultants, Inc.
A Tetra Teck Company

01/02/03