

E.F.U.

Map 1 of 2

200
28.70 Ac.
28405

301
1.52 Ac.
189.69
350.0
350.0
189.69

201
1.00 Ac.
28313
360'
360'

1900
36.60 Ac.
28551

RECEIVED
AUG 2002
WATER RESOURCES DEPT.
SALE

Section 25,
T. 4S. R.I.E. w.m
Clackamas County

Basin 2:
Willamette

Well Location:

722 feet north and 524
feet west of southeast
corner of section 25.

1904
0.93 Ac.
28659

1905
0.92 Ac.

1902
0.93 Ac.
28747

1903
0.01 Ac.

Future
Irrigation

9 acres
Irrigated

Well
900' 524' pipe

1703
10.00 Ac.

490
51.97 Ac.

1702
4.55 Ac.
11521
11525

1701
4.85 Ac.
11579

1800
9.73 Ac.
11699
11703

1906
19.88 Ac.
28959

2000
0.81 Ac.
28891

2900

JUN 10 2002

1" = 400'

app # G-15808
Permit # G-15483

4 IE 25

BOOK 35

4 2 E 30

4 **285**

SEE MAP

4 IE 36

36

31

NO. 897

RD. 30

722'

165'

560'

994'

15' x 20'

660'

522.46'

421'

RD. 2002

S. CRAMER

522.46'

421'

RD. 2002

S. CRAMER

MOLALLA FOREST RD.

APPROX. 6" OF 70" W/D PIPELINE EASEMENT

4 IE 36

EFU

35-13

Section 25
T. 4S. R.1.E. WM
Clackamas County

Basin 2:
Willamette

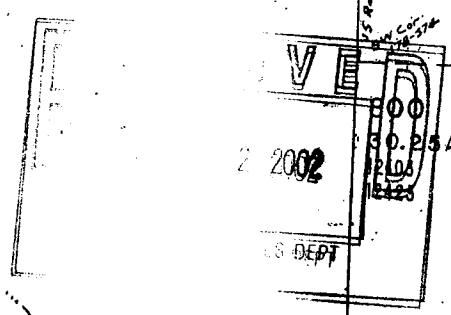
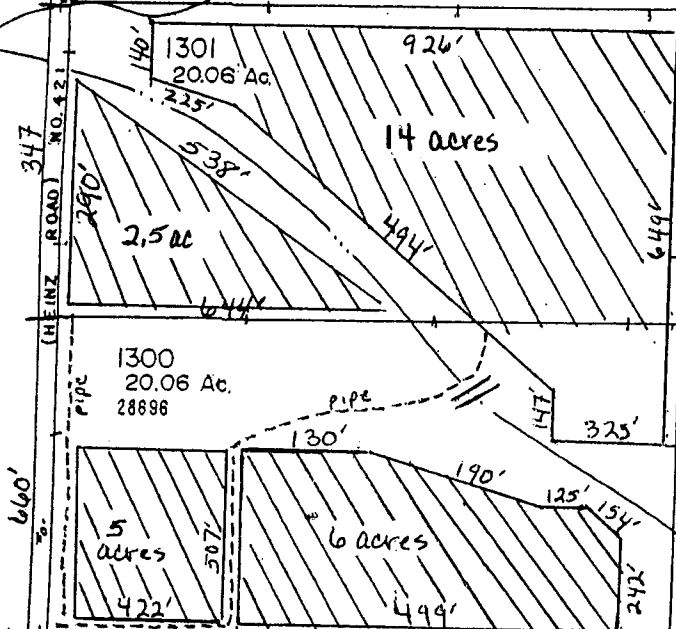
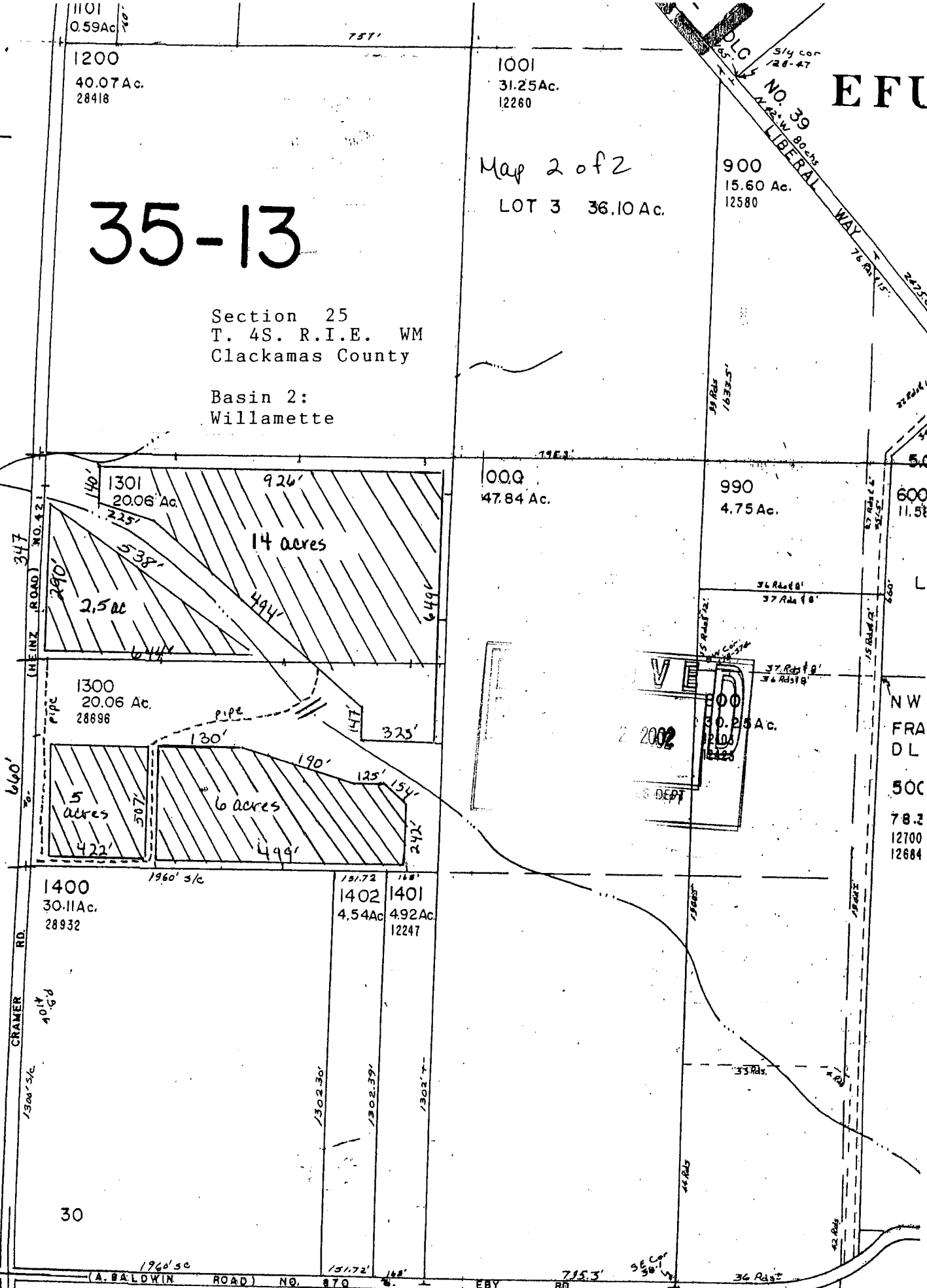
Map 2 of 2

LOT 3 36.10 Ac.

SEE MAP 4 IE 25

CO. RD. No. 639

36



1" = 400' app # G-15808 SEE MAP 4
Permit # G-15483