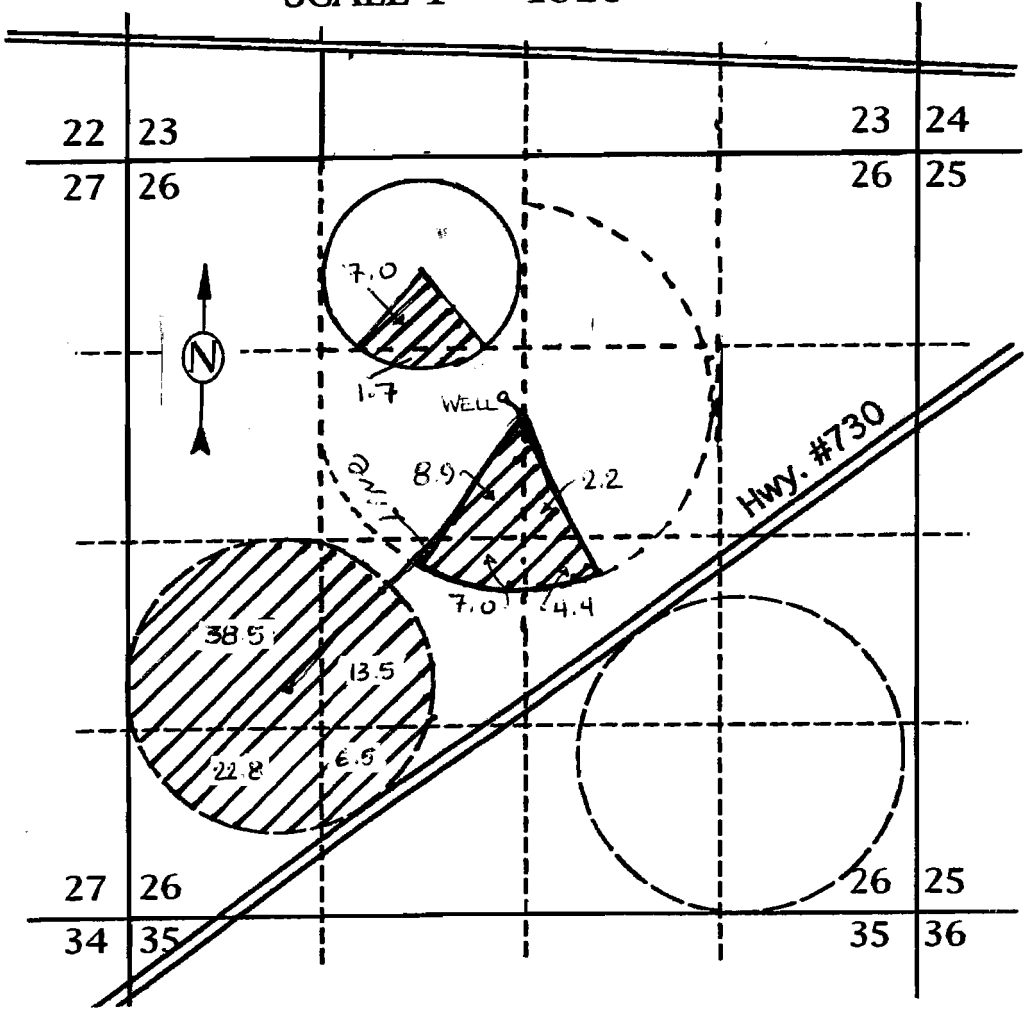


G-15867
G-15493
T. 5N., R. 26E., W.M.

MORROW COUNTY
SCALE 1" = 1320'



**EXISTING WELL #1 LOCATION 1610' SOUTH AND 70' WEST
FROM THE N¹/₄ CORNER SEC 26**

Legend

Proposed Location

T5N R26E Section 26 1/4 1/4	Total Proposed W/R Acres
SW NE	2.2
NE NW	7.0
SE NW	10.6
NE SW	20.5
NW SW	38.5
SW SW	22.8
SE SW	6.5
NW SE	4.4
TOTAL	112.5

RECEIVED

AUG 01 2002

WATER RESOURCES DEPT
SALEM, OREGON

RECEIVED

JUL 22 2002

WATER RESOURCES DEPT
SALEM, OREGON