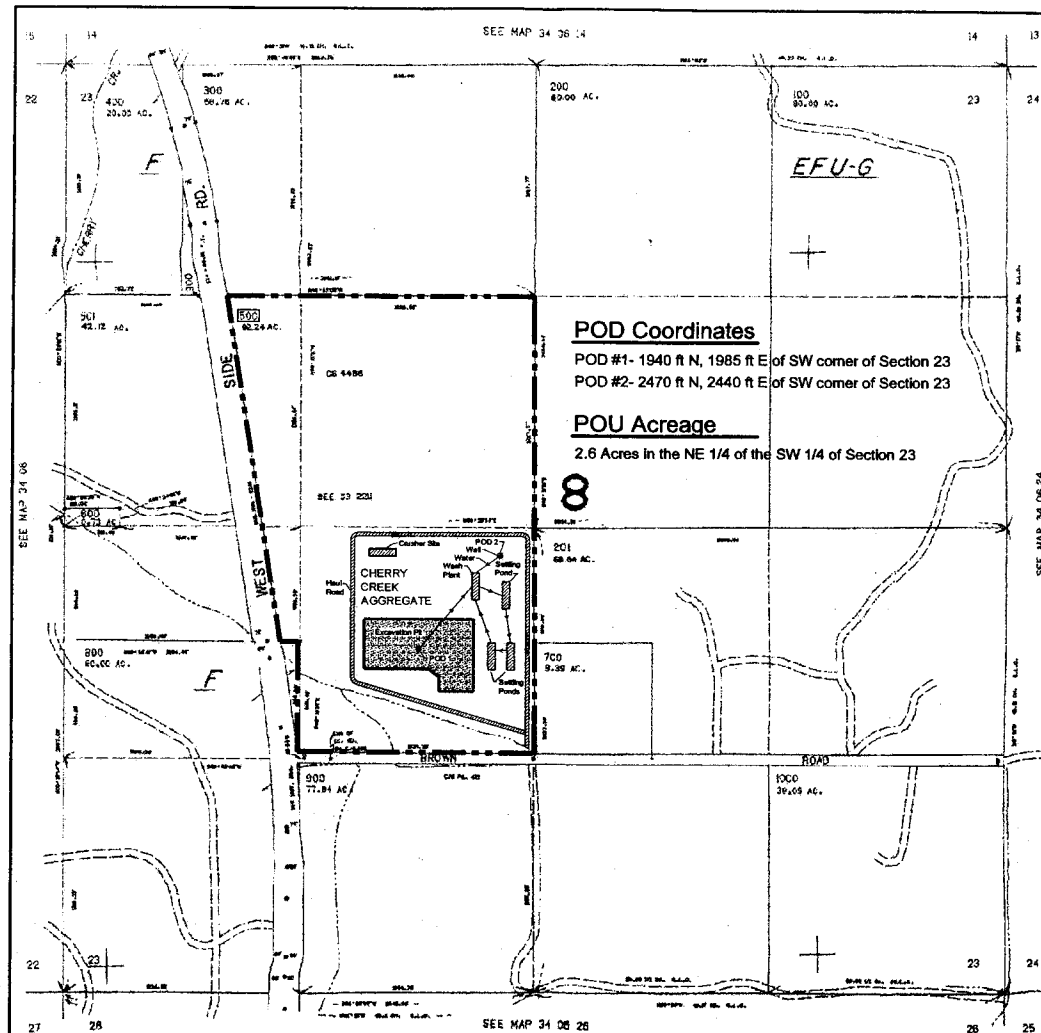


app no G-15881
Permit no G-15494



POD Coordinates

POD #1- 1940 ft N, 1985 ft E of SW corner of Section 23
POD #2- 2470 ft N, 2440 ft E of SW corner of Section 23

POU Acreage

2.6 Acres in the NE 1/4 of the SW 1/4 of Section 23

8

RECEIVED
NOV 29 2002
WATER RESOURCES DEPT.
SALEM, OREGON

1" rep. 700'

DAVID
BROWN &
Associates, Inc.
Consultants in the Earth Sciences

LEGEND

- Project Location
- Haul Road
- Water Flow
- Settling Pond
- Wash Plant
- Crusher Site
- Excavation Pit
- Places Of Use (POU)
- Point Of Diversion (POD)

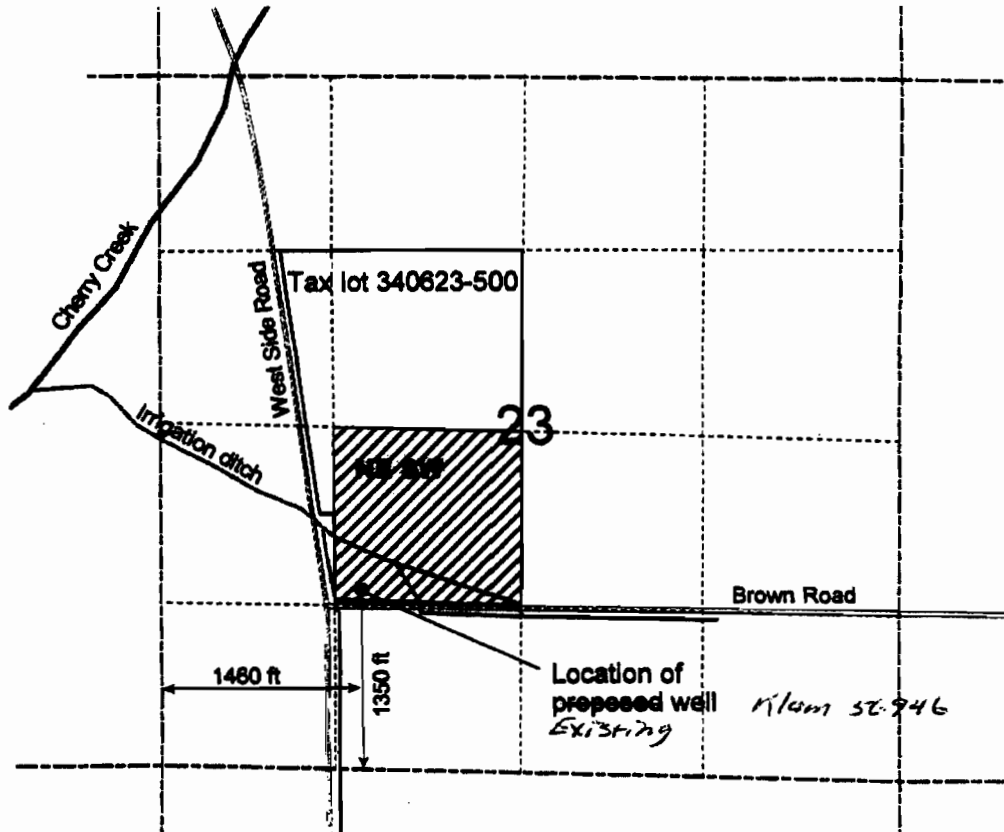
S23 T34S R6E - Klamath County

Cherry Creek
Aggregates, LLC
Klamath Falls, Oregon




Project Plat Map

Project #	365.02
Drawn By	M. Giesbers
Reviewed By	Figure
Date	November, 2002
Scale	As Noted
	2

Cherry Creek Aggregate LLC
Permit G-15494
Permit Amendment to
Change Point of Appropriation
T 34 S, R 6 E, Sec 23, W.M.



Legend

-  Area of Industrial use
-  Section Line
-  Quarter-quarter line



Scale 1" = 1320'

RECEIVED

OCT 09 2009

WATER RESOURCES DEPT
SALEM, OREGON

T 10963