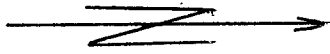
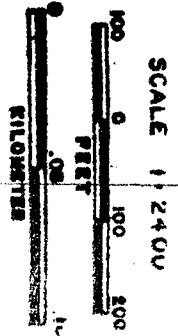


THIS MAP WAS PREPARED FOR ASSESSMENT PURPOSE ONLY

SW 1/4 NW 1/4 SEC. 31 T. 5S. R. 24E. W.M.  
GILLIAM COUNTY  
1" = 100'

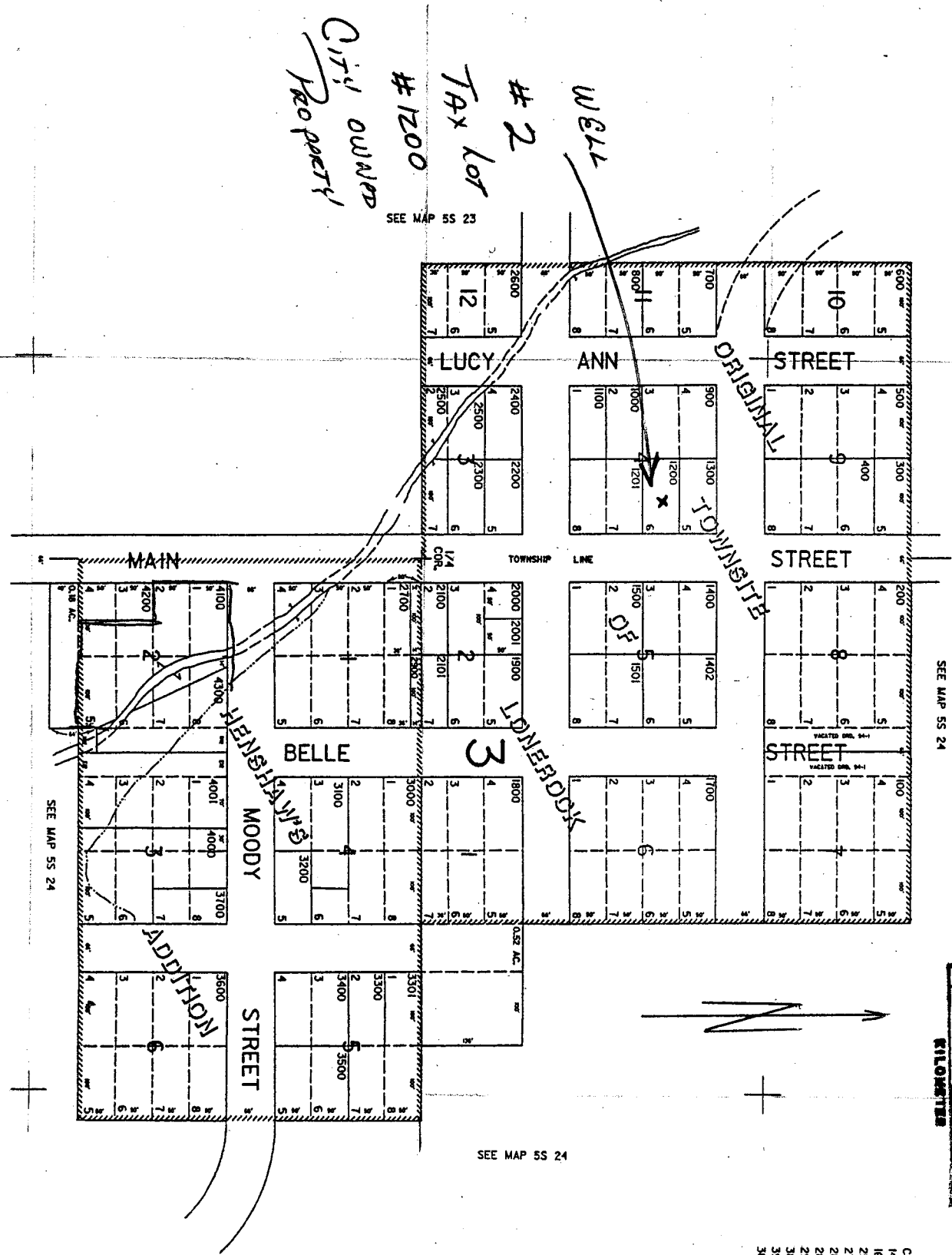
5S 24  
LONEROCK



- CANCELLED NO.'S
- 1401
- 1600
- 2501
- 2701
- 2800
- 2801
- 2901
- 3800
- 3900
- 301

RECEIVED  
AUG 19 2002

WATER RESOURCES DEPT.  
SALEM, OREGON

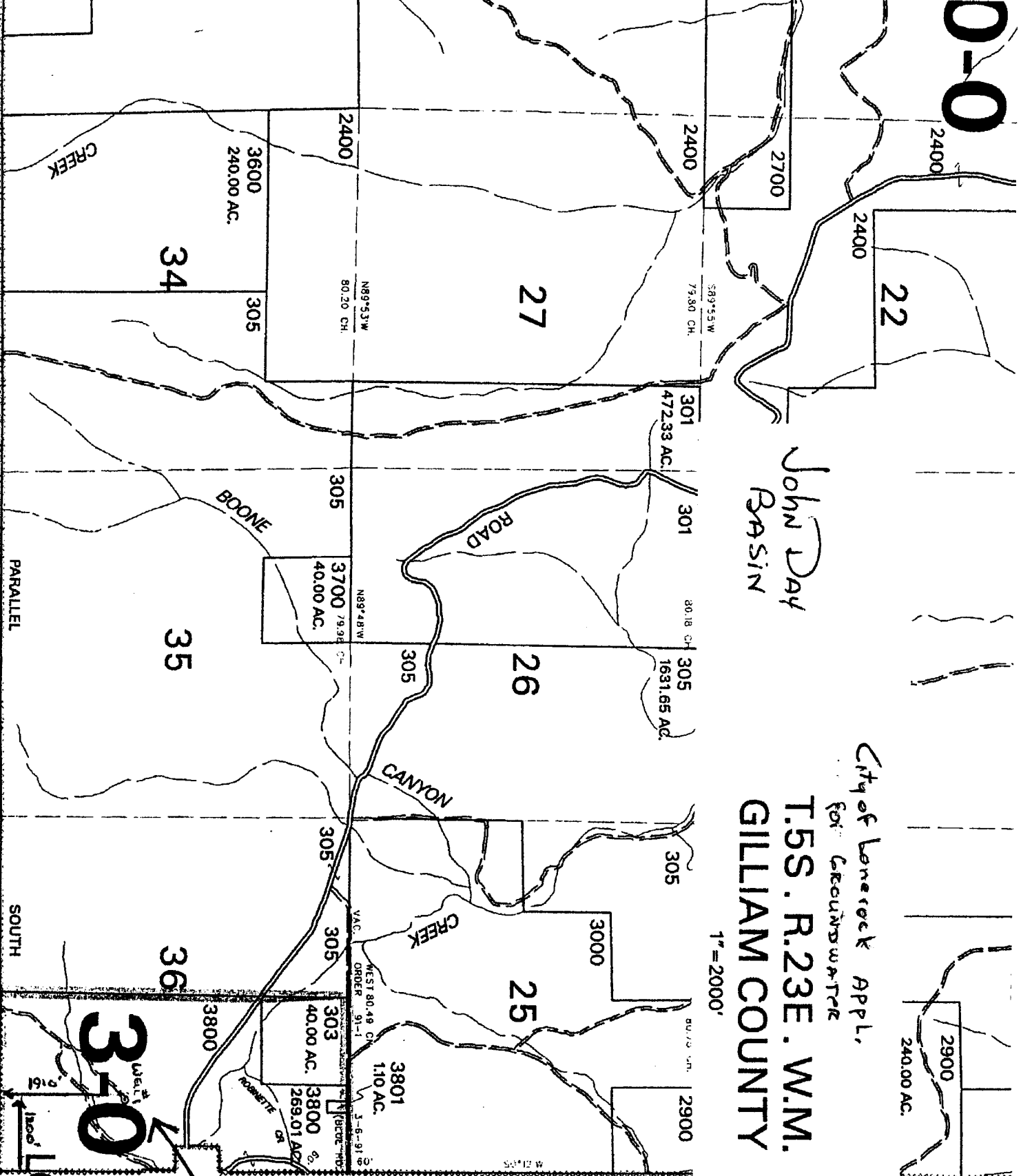


EC 24 21DC

518,600

0-0

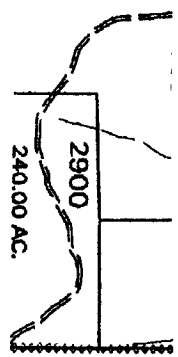
E MAP 6S 23E



John Day  
Basin

City of Lonerock Appl.  
for Groundwater  
T.5S. R.23E. W.M.  
GILLIAM COUNTY

1" = 2000'



SEE N

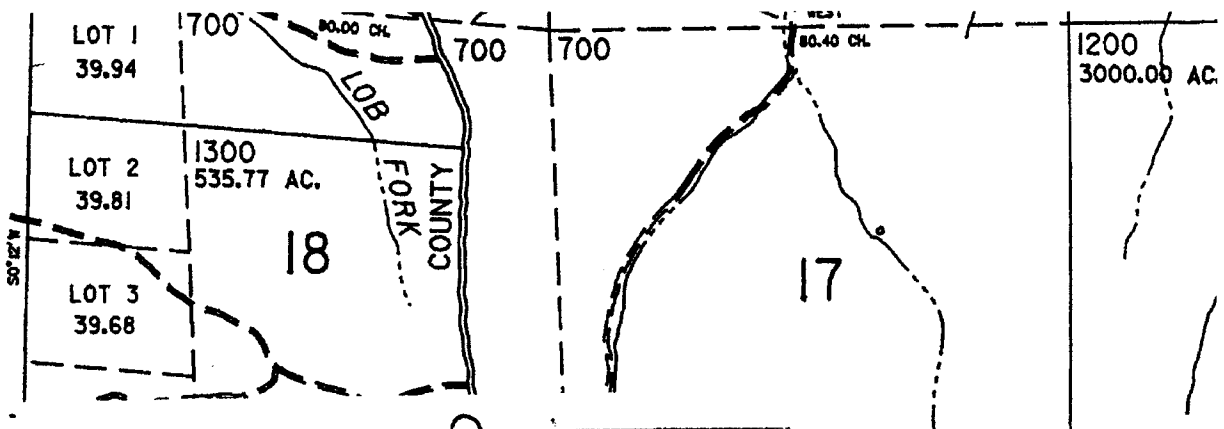
RECEIVED

AUG 19 2002

WATER RESOURCES DEPT.  
SALEM, OREGON

BUTTERMILK  
RD.  
EXISTING  
RESERVED: G  
11/76/00

3-0  
West  
LONEROCI  
5S 23

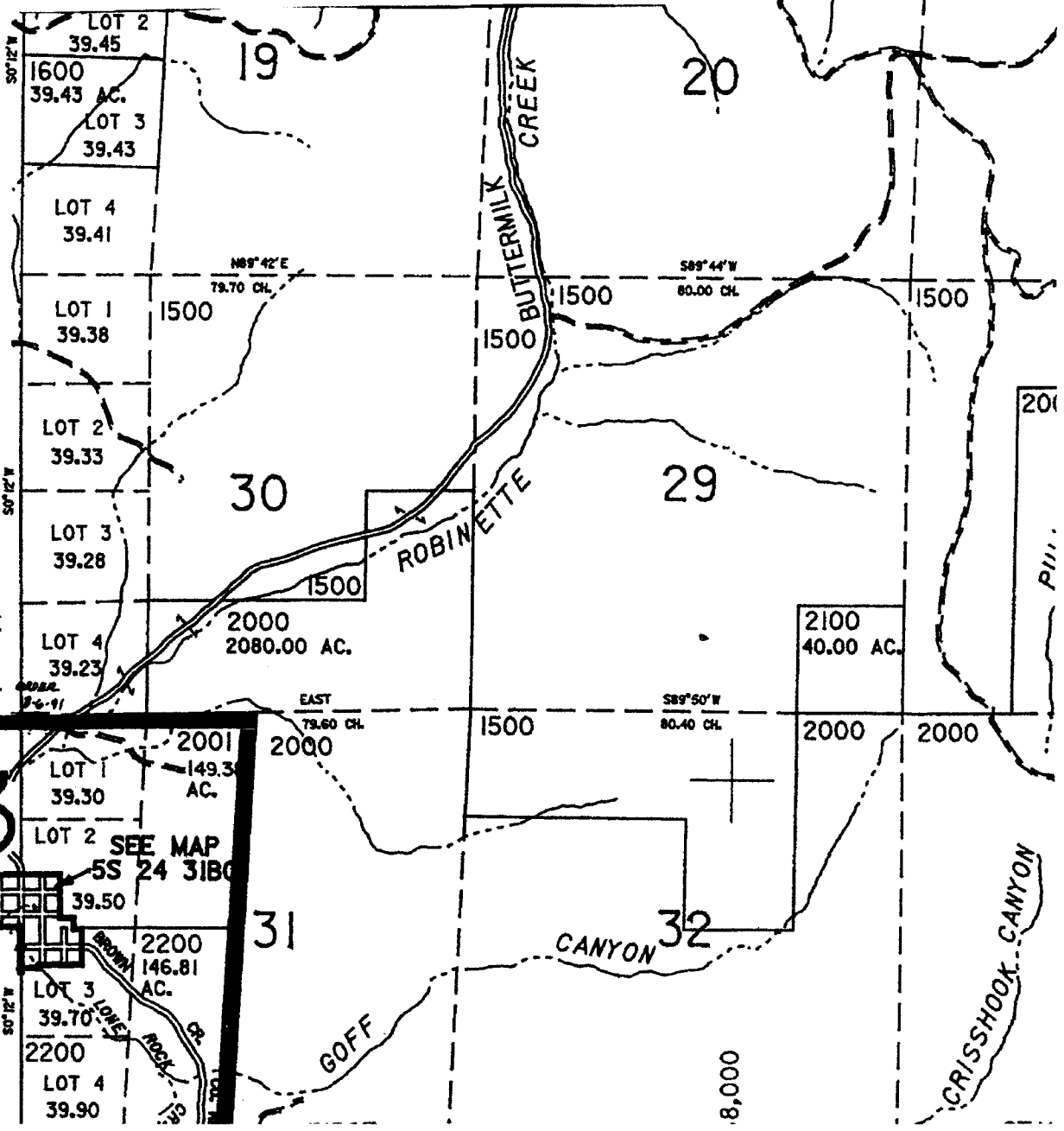


John DAY BASIN

T.5S. R.24E. W.M.  
 GILLIAM COUNTY

1" = 2000'

SEE MAP 5S 23



**RECEIVED**

AUG 19 2002

WATER RESOURCES DEPT.  
 SALEM, OREGON

area of use  
 City of Lowland

WELL #2  
 2900' N8  
 2500' W from  
 SE cor, See 31

