

THIS MAP WAS PREPARED FOR ASSESSMENT PURPOSE ONLY

RECEIVED

SEP 12 2002

WATER RESOURCES DEPT. SALEM, OREGON

SECTION 28 T.13S. R.30E. W.M.

GRANT COUNTY

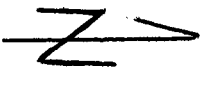
1" = 400'

G-15839  
# app  
# perm  
# SEE MAP 13 30  
G-15502

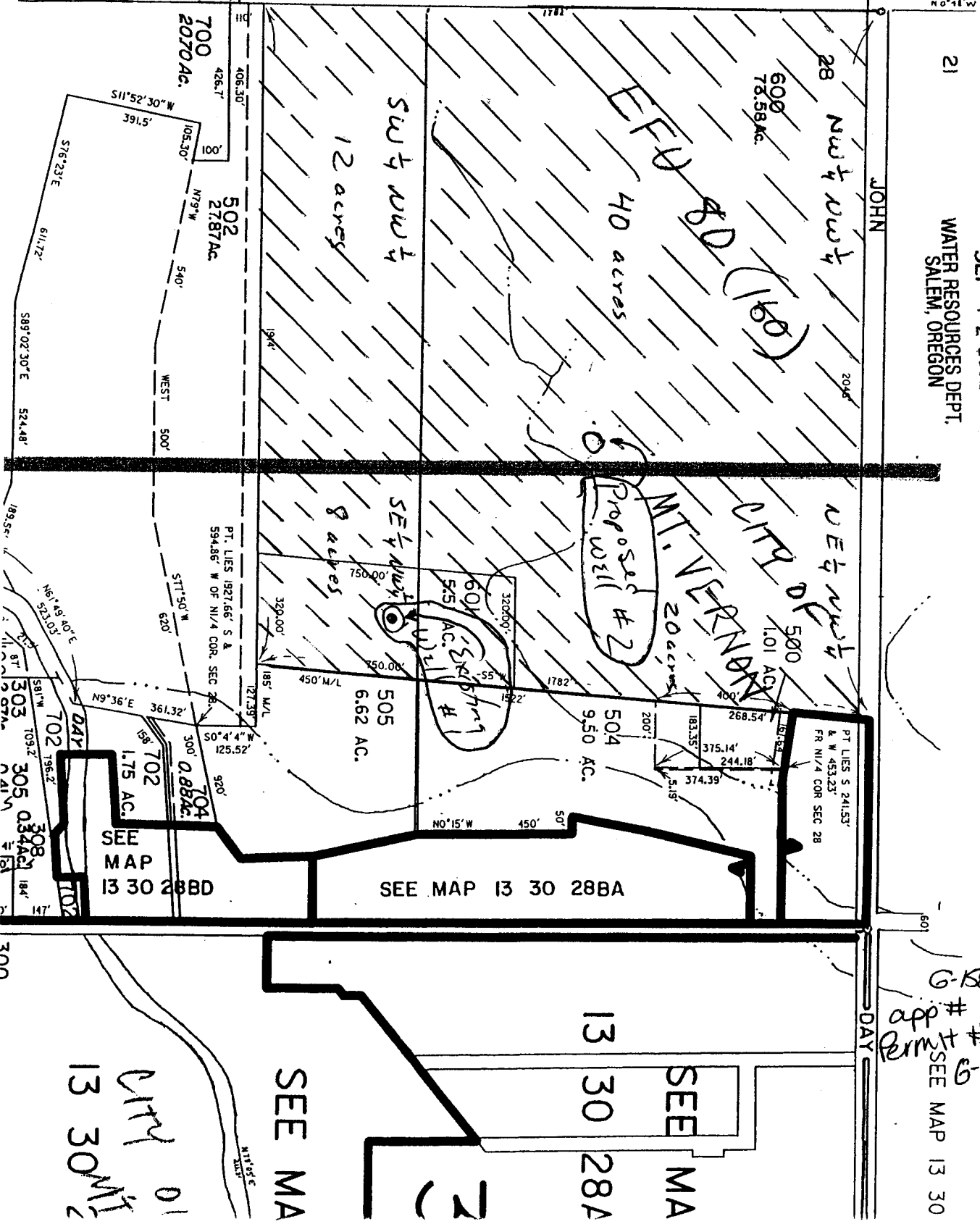
Existing Well #1 29

1770' E, 1410' S  
NW 1/4 corner Sec 28  
T13S. R30E WM

Proposed Well #2  
1260' E, 830' S  
NW 1/4 corner Sec 28  
T13S. R30E. WM



AP 13 30 29  
No 2 1/2 1/3 W  
52.00'



DAY

DAY

SEE MA

13 30 28A

SEE MA

SEE MA  
CITY 01  
13 30 29