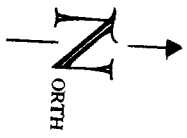


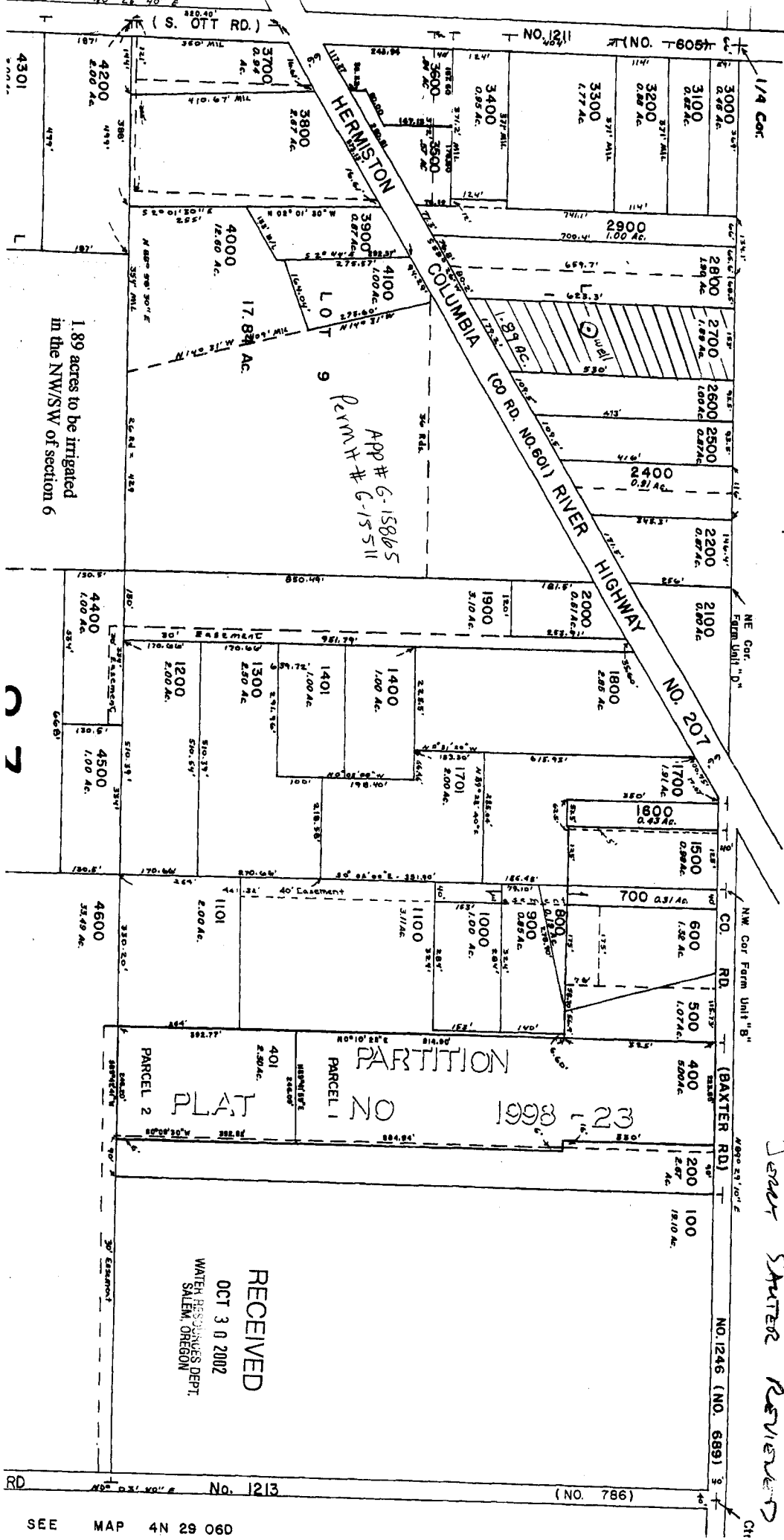
Jerry this map was checked for the scale by the Umatilla county cartographer

Jerry SALTER REVIEWED



SEE MAP 4N 29 06 B

1.89 ACRES IN THE N.W. QUARTER OF THE S.W. 1/4 OF SEC. 6 T. 4N. R. 29E. EWM TAX LOT 2700 WELL IS LOCATED 619.80 FEET EAST AND 315.00 FEET SOUTH OF N.W. CORNER OF S.W. 1/4 MARKER SOUTH 63 DEGREES 03 MINUTES 35 SECONDS 695.25 FEET EAST OF N.W. CORNER MARKER 53 FEET FROM WEST PROPERTY LINE.



1.89 acres to be irrigated in the NW/SW of section 6

APP # G-15865
Permit # G-15511

RECEIVED
OCT 3 0 2002
WATER RESOURCES DEPT.
SALEM, OREGON