

APPNO G-15906
 PERMIT NO G-15534

WELL IS LOCATED:
 525 FT S B
 1180 FT W FROM
 NE CORNER SECTION 5

APP # G-15906

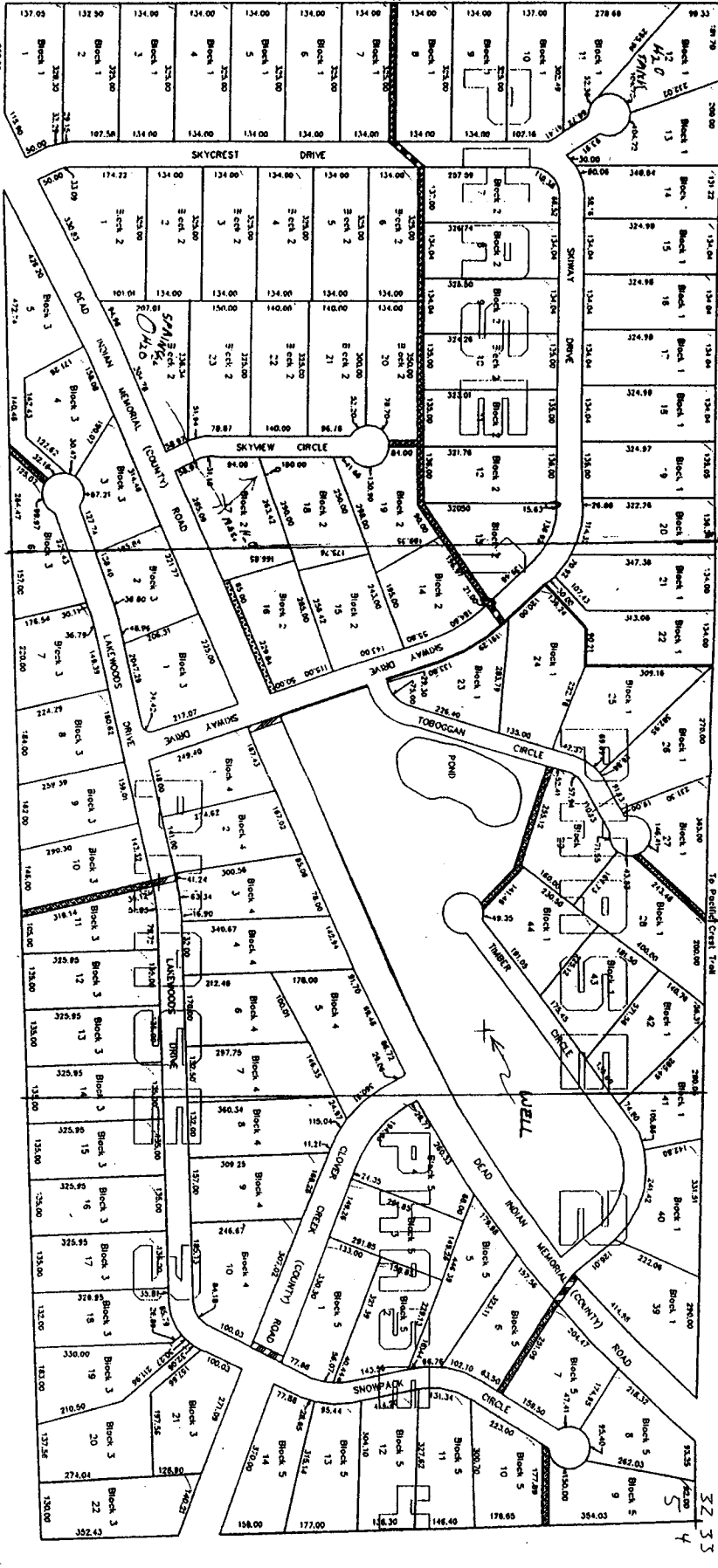
1" = 400'

KLAMATH COUNTY
LAKEWOODS
 OREGON

RECEIVED
 JAN 07 2003
 WATER RESOURCES DEPT
 SALEM, OREGON

RECEIVED
 DEC 24 2002
 WATER RESOURCES DEPT
 SALEM, OREGON

BLK. NO.	BLK. 1	BLK. 2	BLK. 3	BLK. 4	BLK. 5
1	1.00 AC	1.00 AC	1.00 AC	1.00 AC	1.00 AC
2	1.00 AC	1.00 AC	1.00 AC	1.00 AC	1.00 AC
3	1.00 AC	1.00 AC	1.00 AC	1.00 AC	1.00 AC
4	1.00 AC	1.00 AC	1.00 AC	1.00 AC	1.00 AC
5	1.00 AC	1.00 AC	1.00 AC	1.00 AC	1.00 AC
6	1.00 AC	1.00 AC	1.00 AC	1.00 AC	1.00 AC
7	1.00 AC	1.00 AC	1.00 AC	1.00 AC	1.00 AC
8	1.00 AC	1.00 AC	1.00 AC	1.00 AC	1.00 AC
9	1.00 AC	1.00 AC	1.00 AC	1.00 AC	1.00 AC
10	1.00 AC	1.00 AC	1.00 AC	1.00 AC	1.00 AC
11	1.00 AC	1.00 AC	1.00 AC	1.00 AC	1.00 AC
12	1.00 AC	1.00 AC	1.00 AC	1.00 AC	1.00 AC
13	1.00 AC	1.00 AC	1.00 AC	1.00 AC	1.00 AC
14	1.00 AC	1.00 AC	1.00 AC	1.00 AC	1.00 AC
15	1.00 AC	1.00 AC	1.00 AC	1.00 AC	1.00 AC
16	1.00 AC	1.00 AC	1.00 AC	1.00 AC	1.00 AC
17	1.00 AC	1.00 AC	1.00 AC	1.00 AC	1.00 AC
18	1.00 AC	1.00 AC	1.00 AC	1.00 AC	1.00 AC
19	1.00 AC	1.00 AC	1.00 AC	1.00 AC	1.00 AC
20	1.00 AC	1.00 AC	1.00 AC	1.00 AC	1.00 AC
21	1.00 AC	1.00 AC	1.00 AC	1.00 AC	1.00 AC
22	1.00 AC	1.00 AC	1.00 AC	1.00 AC	1.00 AC
23	1.00 AC	1.00 AC	1.00 AC	1.00 AC	1.00 AC
24	1.00 AC	1.00 AC	1.00 AC	1.00 AC	1.00 AC
25	1.00 AC	1.00 AC	1.00 AC	1.00 AC	1.00 AC
26	1.00 AC	1.00 AC	1.00 AC	1.00 AC	1.00 AC
27	1.00 AC	1.00 AC	1.00 AC	1.00 AC	1.00 AC
28	1.00 AC	1.00 AC	1.00 AC	1.00 AC	1.00 AC
29	1.00 AC	1.00 AC	1.00 AC	1.00 AC	1.00 AC
30	1.00 AC	1.00 AC	1.00 AC	1.00 AC	1.00 AC
31	1.00 AC	1.00 AC	1.00 AC	1.00 AC	1.00 AC
32	1.00 AC	1.00 AC	1.00 AC	1.00 AC	1.00 AC
33	1.00 AC	1.00 AC	1.00 AC	1.00 AC	1.00 AC
34	1.00 AC	1.00 AC	1.00 AC	1.00 AC	1.00 AC
35	1.00 AC	1.00 AC	1.00 AC	1.00 AC	1.00 AC
36	1.00 AC	1.00 AC	1.00 AC	1.00 AC	1.00 AC
37	1.00 AC	1.00 AC	1.00 AC	1.00 AC	1.00 AC
38	1.00 AC	1.00 AC	1.00 AC	1.00 AC	1.00 AC
39	1.00 AC	1.00 AC	1.00 AC	1.00 AC	1.00 AC
40	1.00 AC	1.00 AC	1.00 AC	1.00 AC	1.00 AC
41	1.00 AC	1.00 AC	1.00 AC	1.00 AC	1.00 AC
42	1.00 AC	1.00 AC	1.00 AC	1.00 AC	1.00 AC
43	1.00 AC	1.00 AC	1.00 AC	1.00 AC	1.00 AC
44	1.00 AC	1.00 AC	1.00 AC	1.00 AC	1.00 AC
45	1.00 AC	1.00 AC	1.00 AC	1.00 AC	1.00 AC
46	1.00 AC	1.00 AC	1.00 AC	1.00 AC	1.00 AC
47	1.00 AC	1.00 AC	1.00 AC	1.00 AC	1.00 AC
48	1.00 AC	1.00 AC	1.00 AC	1.00 AC	1.00 AC
49	1.00 AC	1.00 AC	1.00 AC	1.00 AC	1.00 AC
50	1.00 AC	1.00 AC	1.00 AC	1.00 AC	1.00 AC

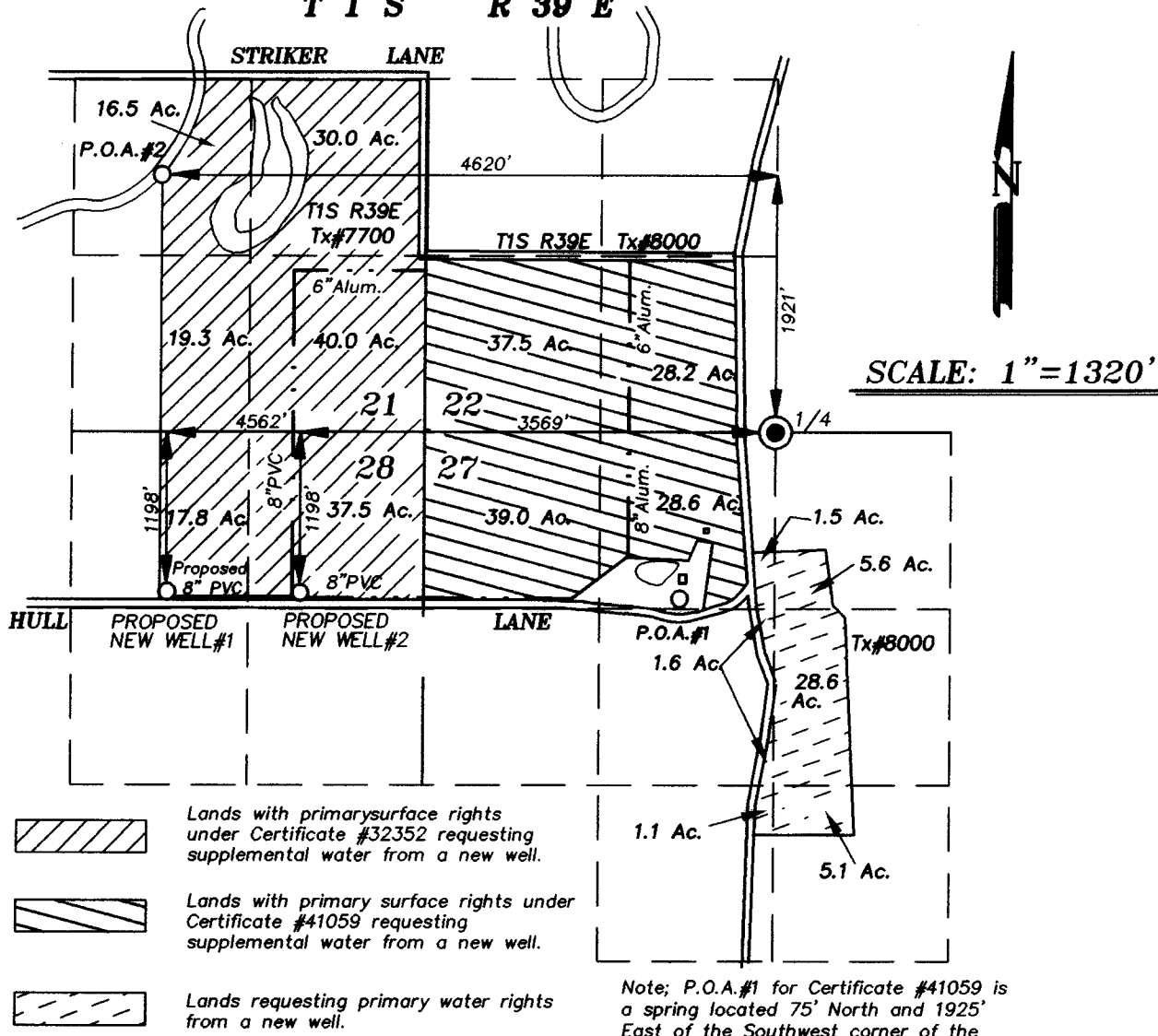


N/E CORNER SECTION 5 S S
 LAKEWOODS

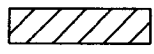
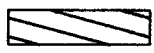
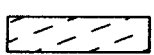
32 55
 4

SUPERSEDING

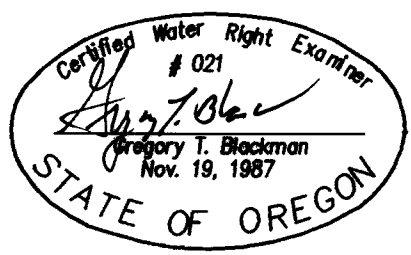
T 1 S R 39 E



SCALE: 1"=1320'

-  Lands with primary surface rights under Certificate #32352 requesting supplemental water from a new well.
-  Lands with primary surface rights under Certificate #41059 requesting supplemental water from a new well.
-  Lands requesting primary water rights from a new well.

Note; P.O.A.#1 for Certificate #41059 is a spring located 75' North and 1925' East of the Southwest corner of the NW $\frac{1}{4}$ of the NW $\frac{1}{4}$ of Section 27.



SUPERSEDING
 July 16, 2003
**APPLICATION MAP OF
 SUPPLEMENTAL WATER
 FROM
 A NEW WELL**
 FOR
Russel & Patricia Bingaman
 BY
BAGETT - GRIFFITH & BLACKMAN
 2006 ADAMS AVENUE
 LAGRANDE, OREGON 97850

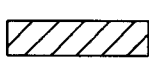
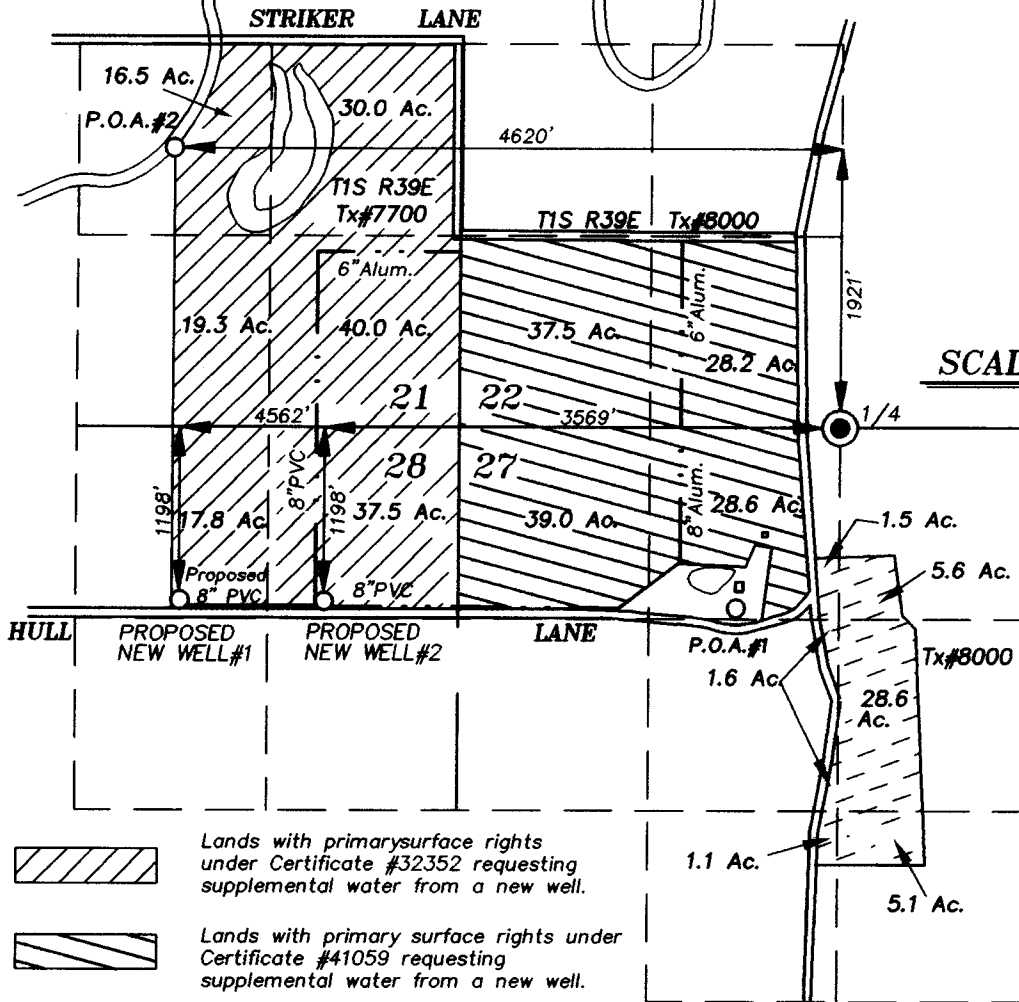
NOTE: The preparation of this map was for the purpose of identifying the location of the proposed water right and has no intent to provide dimensions or location of property ownership lines. Location information shown hereon was furnished by the applicant.

Application No. G-15931
 Permit Number G-15534

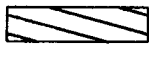
RECEIVED
 JUL 18 2003
 WATER RESOURCES DEPT.
 SALEM, OREGON

SUPERSEDING

T 1 S R 39 E



Lands with primary surface rights under Certificate #32352 requesting supplemental water from a new well.

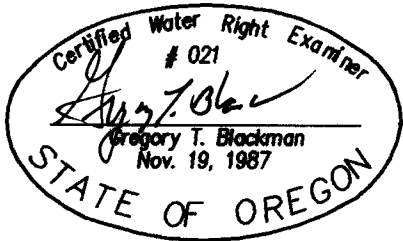


Lands with primary surface rights under Certificate #41059 requesting supplemental water from a new well.



Lands requesting primary water rights from a new well.

Note: P.O.A.#1 for Certificate #41059 is a spring located 75' North and 1925' East of the Southwest corner of the NW $\frac{1}{4}$ of the NW $\frac{1}{4}$ of Section 27.



SUPERSEDING

July 16, 2003

APPLICATION MAP OF SUPPLEMENTAL WATER FROM A NEW WELL

FOR Russel & Patricia Bingaman

BY BAGETT - GRIFFITH & BLACKMAN 2006 ADAMS AVENUE LAGRANDE, OREGON 97850

NOTE: The preparation of this map was for the purpose of identifying the location of the proposed water right and has no intent to provide dimensions or location of property ownership lines. Location information shown hereon was furnished by the applicant.

Application No. G-15931 Permit Number G-15534

RECEIVED

JUL 18 2003

WATER RESOURCES DEPT. SALEM, OREGON