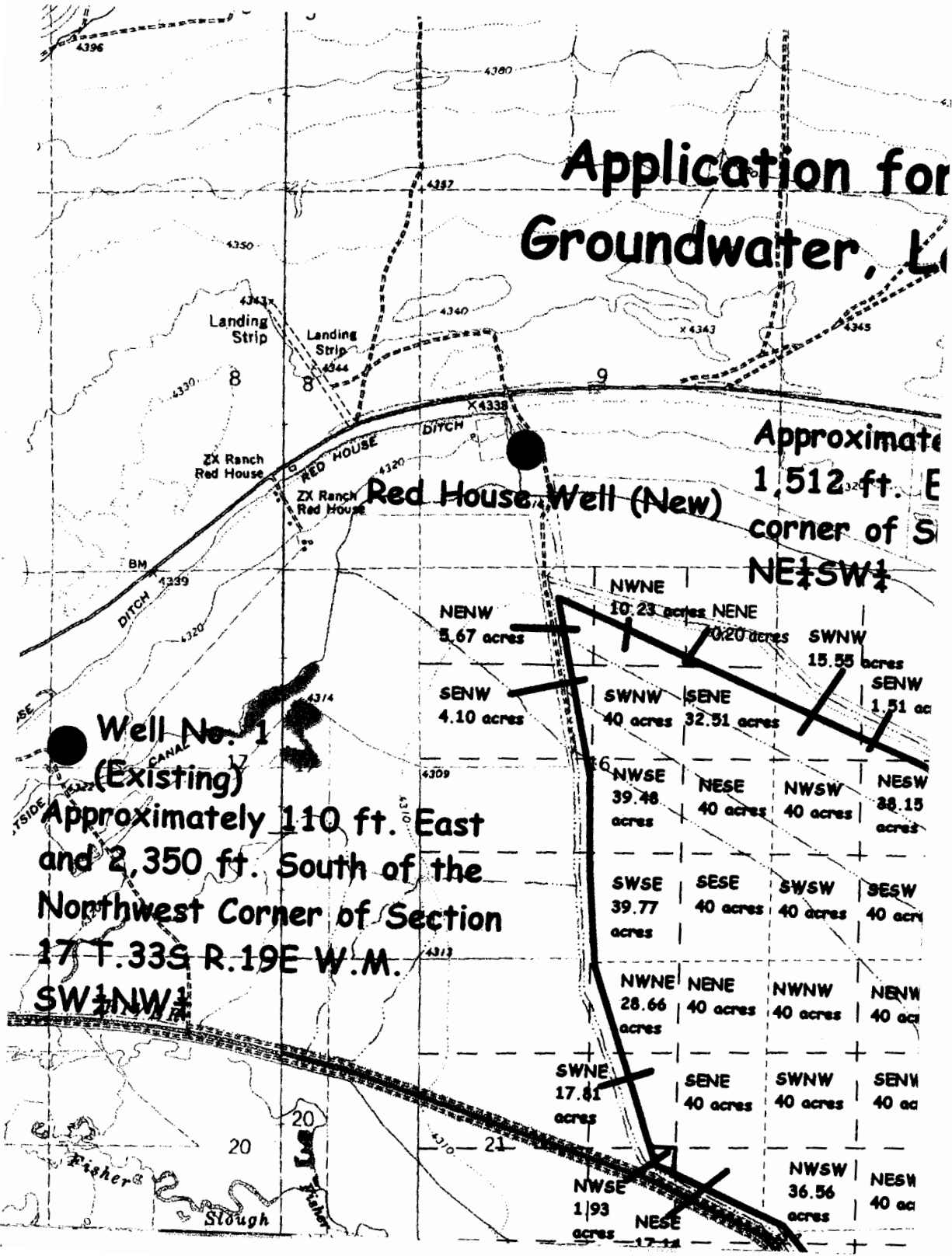


Application for Groundwater, L



Approximate
1,512 ft. E
corner of S
NE $\frac{1}{4}$ SW $\frac{1}{4}$

Red House Well (New)

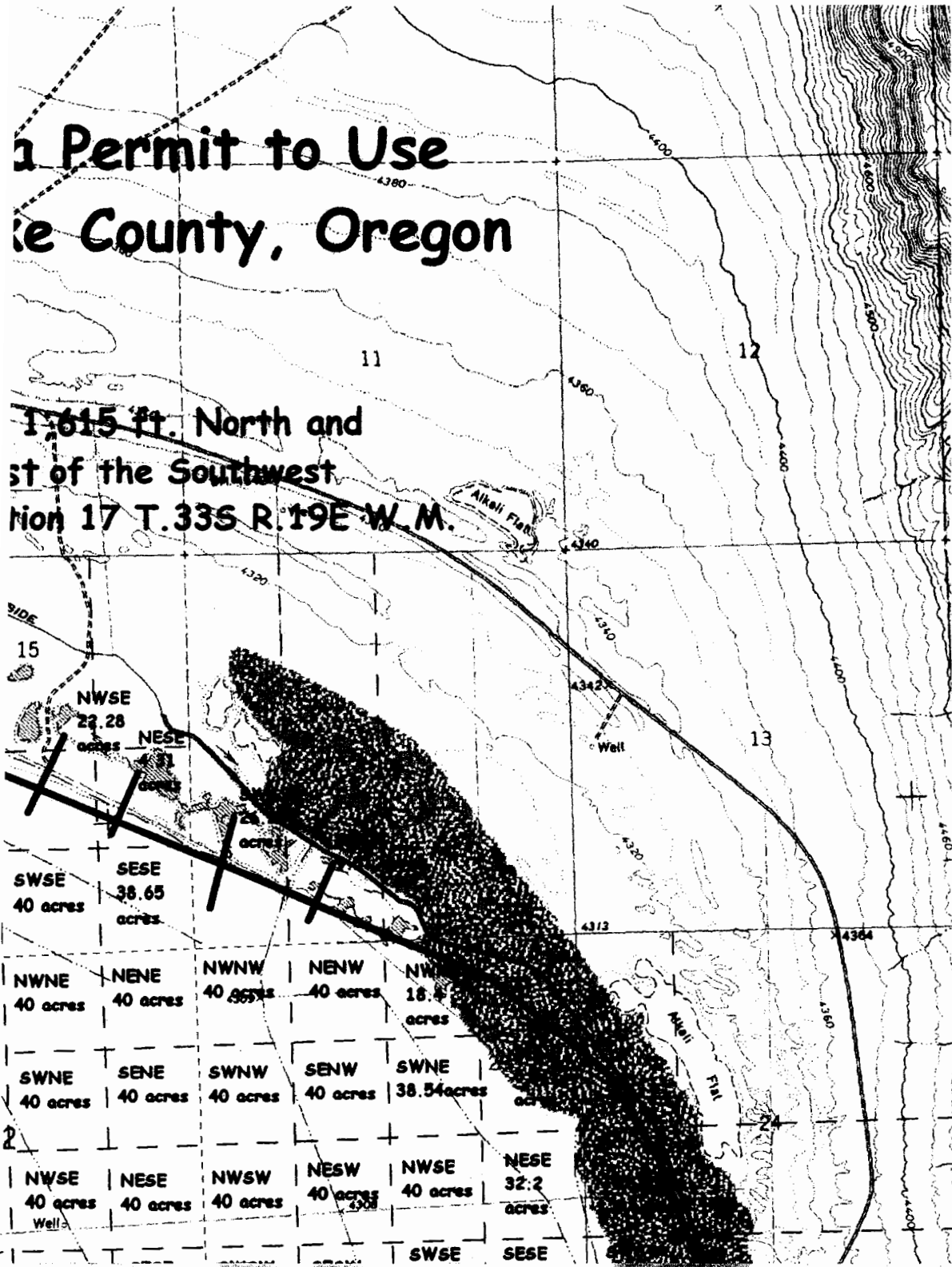
Well No. 1
(Existing)
Approximately 110 ft. East
and 2,350 ft. South of the
Northwest Corner of Section
17 T.33S R.19E W.M.
SW $\frac{1}{4}$ NW $\frac{1}{4}$

NENW 5.67 acres	NWNE 10.23 acres	NENE 10.20 acres	SWNW 15.55 acres
SESW 4.10 acres	SWNW 40 acres	SENE 32.51 acres	SESW 1.51 ac
NWSE 39.48 acres	NESE 40 acres	NWSW 40 acres	NESE 38.15 acres
SWSE 39.77 acres	SESE 40 acres	SWSW 40 acres	SESW 40 ac
NWNE 28.66 acres	NENE 40 acres	NWNW 40 acres	NENW 40 ac
SWNE 17.81 acres	SENE 40 acres	SWNW 40 acres	SESW 40 ac
NWSE 1.93 acres	NESE 17.14	NWSW 36.56 acres	NESE 40 ac

appno G-15996 Permit no B-15548

Permit to Use County, Oregon

1,615 ft. North and
West of the Southwest
Corner of Section 17 T.33S R.19E W.M.



Application for a Permit to Use Groundwater, Lake County, Oregon

Approximately 1,615 ft. North and 1,512 ft. West of the Southwest corner of Section 17 T.33S R.19E W.M. NE $\frac{1}{4}$ SW $\frac{1}{4}$

Well No. 1 (Existing)
 Approximately 110 ft. East and 2,350 ft. South of the Northwest Corner of Section 17 T.33S R.19E W.M. SW $\frac{1}{4}$ NW $\frac{1}{4}$

Red House Well (New)

Scale: 1 Mile

North

= Proposed Place of Use
 = Proposed Points of Diversion

The Place of Use within T.33S R.19E is contained within Lake County Assessor's Tax Lot No. 500

The Place of Use within T.34S R.19E is contained within Lake County Assessor's Tax Lot No. 200

T.33S R.19E W.M.

T.34S R.19E W.M.

App No G-15994
 Permit No

RECEIVED

APR 28 2003

WATER RESOURCES DEPT.
 SALEM, OREGON

