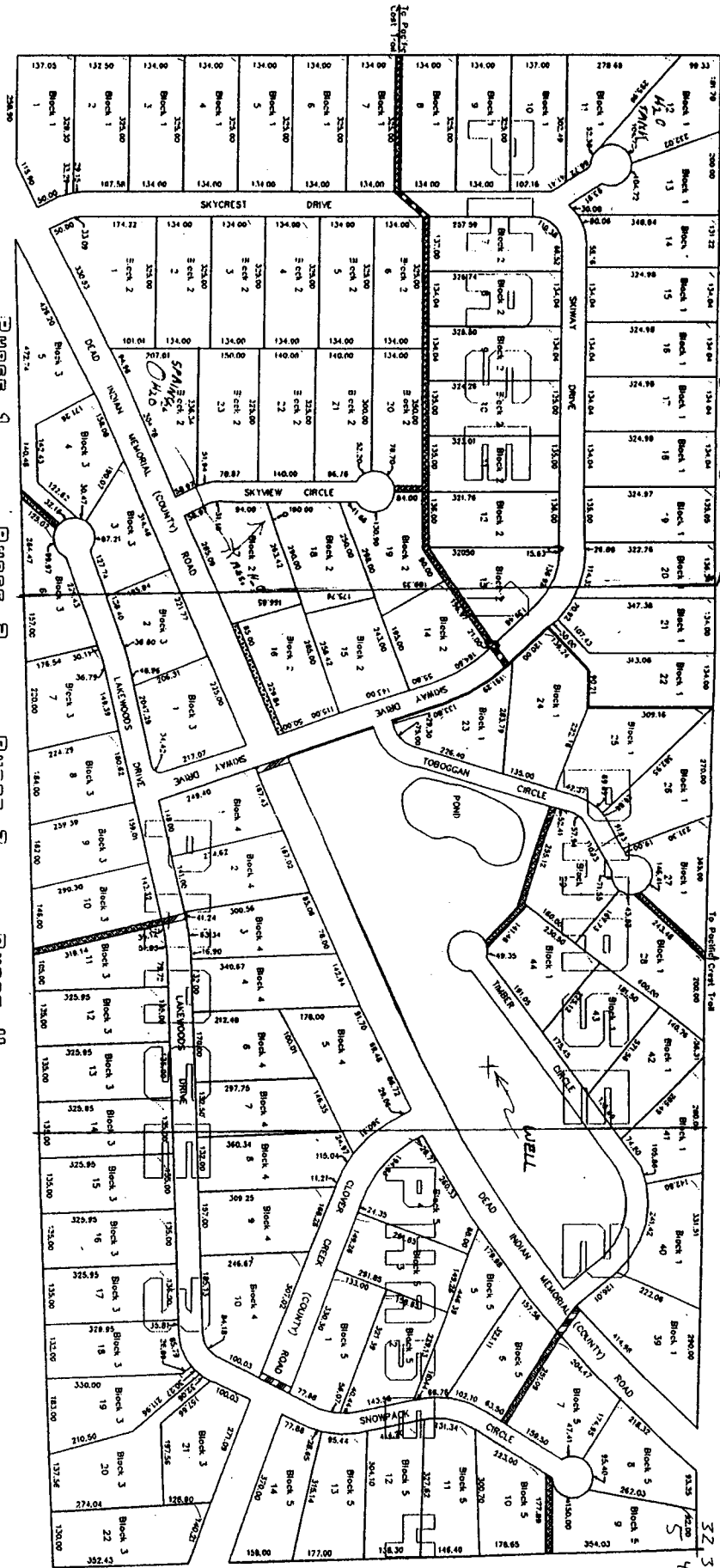


N/4 CORNER SECTION 5 S 5

LAKEWOODS

32 33 4

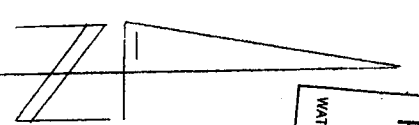


APPND G-15906
 PERMIT NO G-155534
 G-155555

BLK No.	LOT No.	LOT SIZE	BLK No.	LOT No.	LOT SIZE	BLK No.	LOT No.	LOT SIZE	BLK No.	LOT No.	LOT SIZE
1	1	1.00 AC	1	1	1.00 AC	1	1	1.00 AC	1	1	1.00 AC
1	2	1.00 AC	1	2	1.00 AC	1	2	1.00 AC	1	2	1.00 AC
1	3	1.00 AC	1	3	1.00 AC	1	3	1.00 AC	1	3	1.00 AC
1	4	1.00 AC	1	4	1.00 AC	1	4	1.00 AC	1	4	1.00 AC
1	5	1.00 AC	1	5	1.00 AC	1	5	1.00 AC	1	5	1.00 AC
1	6	1.00 AC	1	6	1.00 AC	1	6	1.00 AC	1	6	1.00 AC
1	7	1.00 AC	1	7	1.00 AC	1	7	1.00 AC	1	7	1.00 AC
1	8	1.00 AC	1	8	1.00 AC	1	8	1.00 AC	1	8	1.00 AC
1	9	1.00 AC	1	9	1.00 AC	1	9	1.00 AC	1	9	1.00 AC
1	10	1.00 AC	1	10	1.00 AC	1	10	1.00 AC	1	10	1.00 AC
1	11	1.00 AC	1	11	1.00 AC	1	11	1.00 AC	1	11	1.00 AC
1	12	1.00 AC	1	12	1.00 AC	1	12	1.00 AC	1	12	1.00 AC
1	13	1.00 AC	1	13	1.00 AC	1	13	1.00 AC	1	13	1.00 AC
1	14	1.00 AC	1	14	1.00 AC	1	14	1.00 AC	1	14	1.00 AC
1	15	1.00 AC	1	15	1.00 AC	1	15	1.00 AC	1	15	1.00 AC
1	16	1.00 AC	1	16	1.00 AC	1	16	1.00 AC	1	16	1.00 AC
1	17	1.00 AC	1	17	1.00 AC	1	17	1.00 AC	1	17	1.00 AC
1	18	1.00 AC	1	18	1.00 AC	1	18	1.00 AC	1	18	1.00 AC
1	19	1.00 AC	1	19	1.00 AC	1	19	1.00 AC	1	19	1.00 AC
1	20	1.00 AC	1	20	1.00 AC	1	20	1.00 AC	1	20	1.00 AC
1	21	1.00 AC	1	21	1.00 AC	1	21	1.00 AC	1	21	1.00 AC
1	22	1.00 AC	1	22	1.00 AC	1	22	1.00 AC	1	22	1.00 AC
1	23	1.00 AC	1	23	1.00 AC	1	23	1.00 AC	1	23	1.00 AC
1	24	1.00 AC	1	24	1.00 AC	1	24	1.00 AC	1	24	1.00 AC
1	25	1.00 AC	1	25	1.00 AC	1	25	1.00 AC	1	25	1.00 AC
1	26	1.00 AC	1	26	1.00 AC	1	26	1.00 AC	1	26	1.00 AC
1	27	1.00 AC	1	27	1.00 AC	1	27	1.00 AC	1	27	1.00 AC
1	28	1.00 AC	1	28	1.00 AC	1	28	1.00 AC	1	28	1.00 AC
1	29	1.00 AC	1	29	1.00 AC	1	29	1.00 AC	1	29	1.00 AC
1	30	1.00 AC	1	30	1.00 AC	1	30	1.00 AC	1	30	1.00 AC
1	31	1.00 AC	1	31	1.00 AC	1	31	1.00 AC	1	31	1.00 AC
1	32	1.00 AC	1	32	1.00 AC	1	32	1.00 AC	1	32	1.00 AC
1	33	1.00 AC	1	33	1.00 AC	1	33	1.00 AC	1	33	1.00 AC
1	34	1.00 AC	1	34	1.00 AC	1	34	1.00 AC	1	34	1.00 AC
1	35	1.00 AC	1	35	1.00 AC	1	35	1.00 AC	1	35	1.00 AC
1	36	1.00 AC	1	36	1.00 AC	1	36	1.00 AC	1	36	1.00 AC
1	37	1.00 AC	1	37	1.00 AC	1	37	1.00 AC	1	37	1.00 AC
1	38	1.00 AC	1	38	1.00 AC	1	38	1.00 AC	1	38	1.00 AC
1	39	1.00 AC	1	39	1.00 AC	1	39	1.00 AC	1	39	1.00 AC
1	40	1.00 AC	1	40	1.00 AC	1	40	1.00 AC	1	40	1.00 AC
1	41	1.00 AC	1	41	1.00 AC	1	41	1.00 AC	1	41	1.00 AC
1	42	1.00 AC	1	42	1.00 AC	1	42	1.00 AC	1	42	1.00 AC
1	43	1.00 AC	1	43	1.00 AC	1	43	1.00 AC	1	43	1.00 AC
1	44	1.00 AC	1	44	1.00 AC	1	44	1.00 AC	1	44	1.00 AC
1	45	1.00 AC	1	45	1.00 AC	1	45	1.00 AC	1	45	1.00 AC
1	46	1.00 AC	1	46	1.00 AC	1	46	1.00 AC	1	46	1.00 AC
1	47	1.00 AC	1	47	1.00 AC	1	47	1.00 AC	1	47	1.00 AC
1	48	1.00 AC	1	48	1.00 AC	1	48	1.00 AC	1	48	1.00 AC
1	49	1.00 AC	1	49	1.00 AC	1	49	1.00 AC	1	49	1.00 AC
1	50	1.00 AC	1	50	1.00 AC	1	50	1.00 AC	1	50	1.00 AC

WELL IS LOCATED:
 525 FT S &
 1180 FT W FROM
 NE CORNER SECTION 5

APP # G-15906



1" = 400'

RECEIVED
 JAN 07 2003
 WATER RESOURCES DEPT
 SALEM, OREGON

RECEIVED
 DEC 24 2002
 WATER RESOURCES DEPT
 SALEM, OREGON

CLATSOP COUNTY
 LAKEWOODS
 OREGON