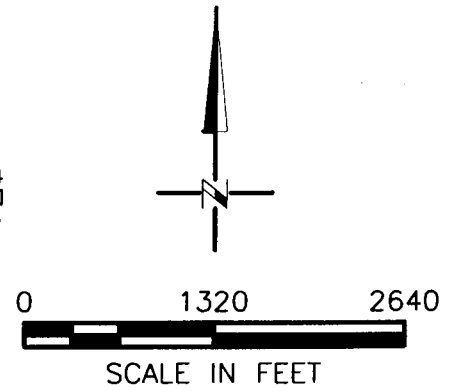
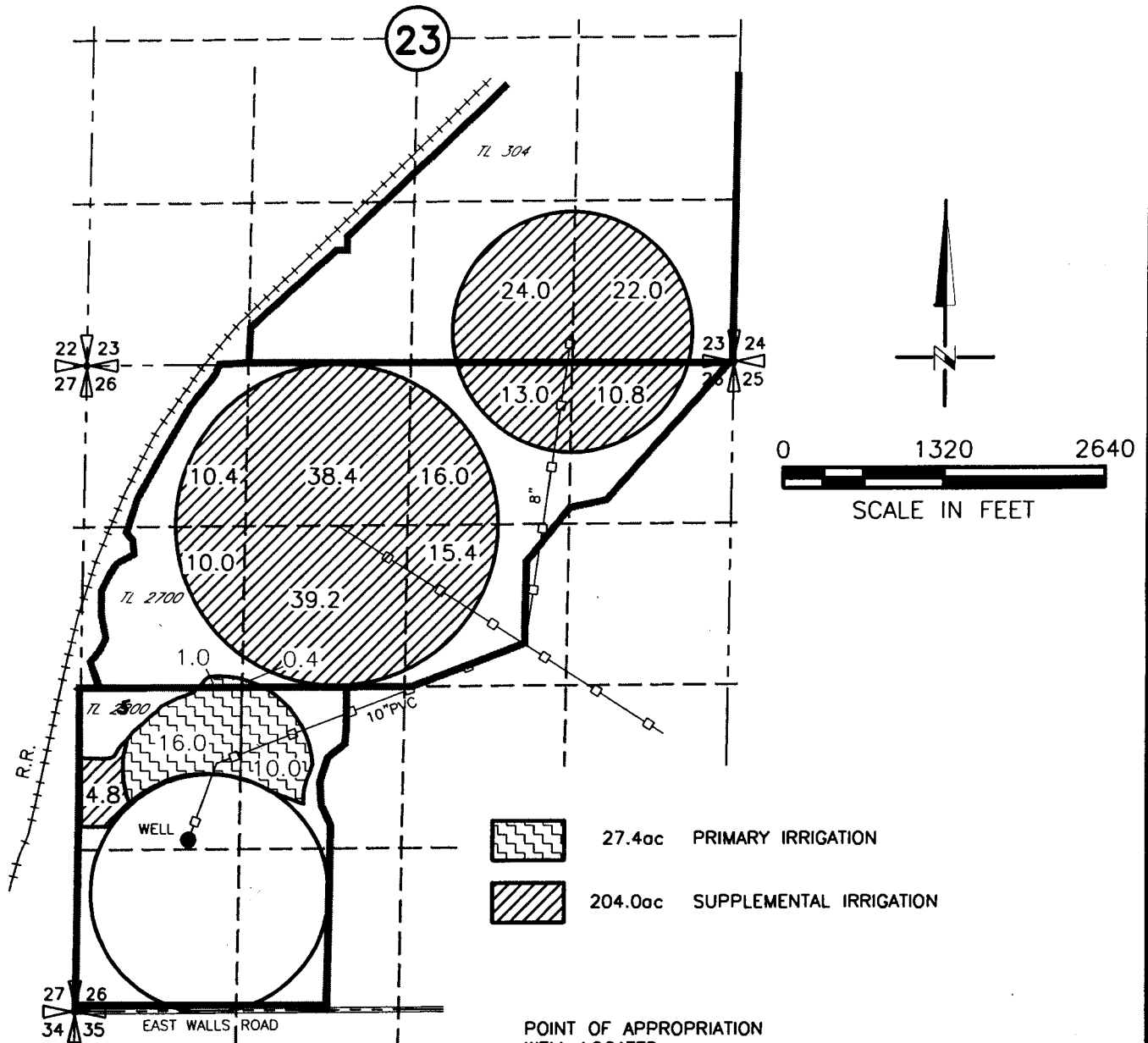


# WATER RIGHT APPLICATION MAP

## for

### LESS MARKS

### T 5N, R 29 E. WM



- 27.4ac PRIMARY IRRIGATION
- 204.0ac SUPPLEMENTAL IRRIGATION

POINT OF APPROPRIATION  
WELL LOCATED  
900' EAST AND 1250' SOUTH FROM  
THE W 1/4 CORNER OF SEC 26

app # ~~6-15386~~ <sup>83</sup> 6-15386  
Permit # 15560

**RECEIVED**  
**SEP 06 2002**  
WATER RESOURCES DEPT.  
SALEM, OREGON

NOTE:  
THE PURPOSE OF THIS MAP IS TO IDENTIFY THE APPROXIMATE LOCATION  
OF THE WATER RIGHT. IT IS NOT INTENDED TO PROVIDE INFORMATION  
RELATIVE TO THE LOCATION OF PROPERTY OWNERSHIP BOUNDARY LINES.

8/23/02  
3522MARK.DWG  
3522.136