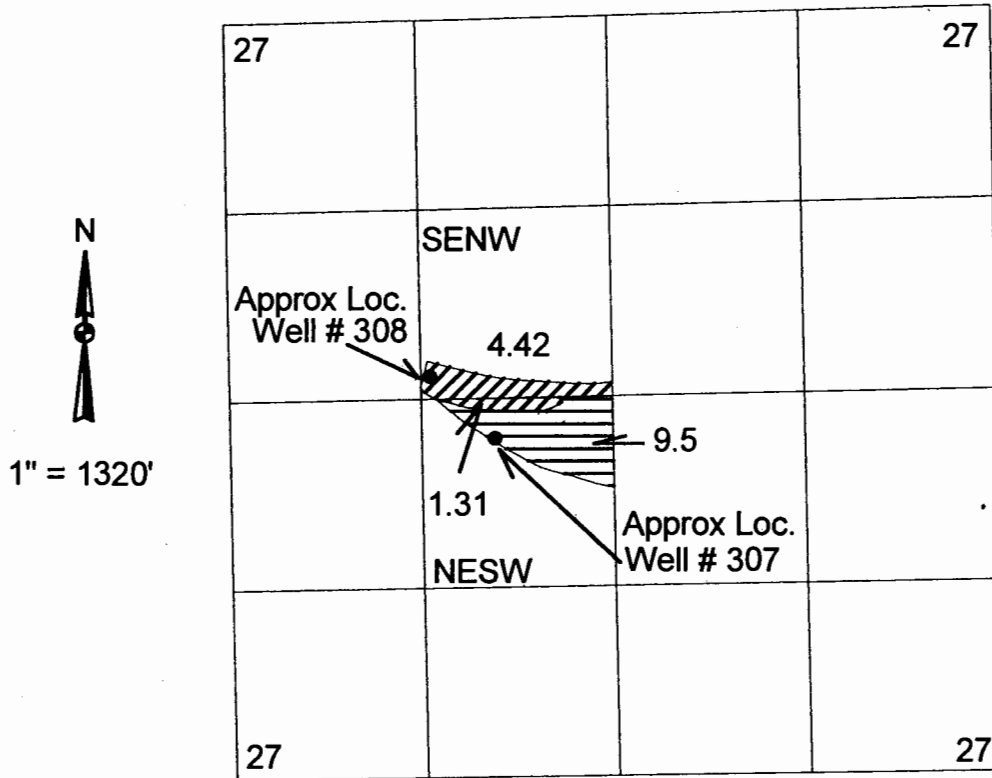


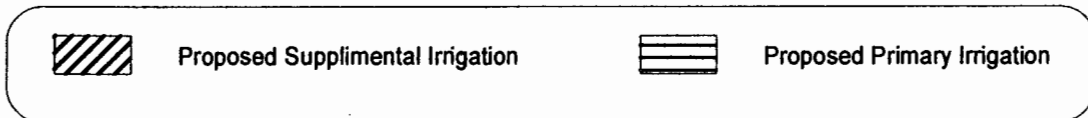
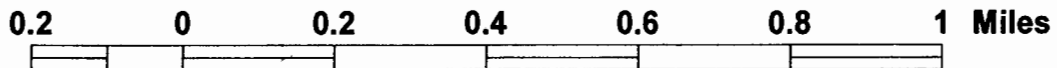
# Application map for Willis Kimball

## T. 13S R. 29 E WM Sec 27

### TaxLot 3700



Well # 308 is approx 1400' E and 2470' S of NW corner of Sec 27 T13S R29E WM  
Well # 307 is approx 1840' E and 2915' S of NW corner of Sec. 27 T13S R29E WM



**RECEIVED**  
APR 04 2003  
WATER RESOURCES DEPT.  
SALEM, OREGON

App No G-15973 Permit No G-15578