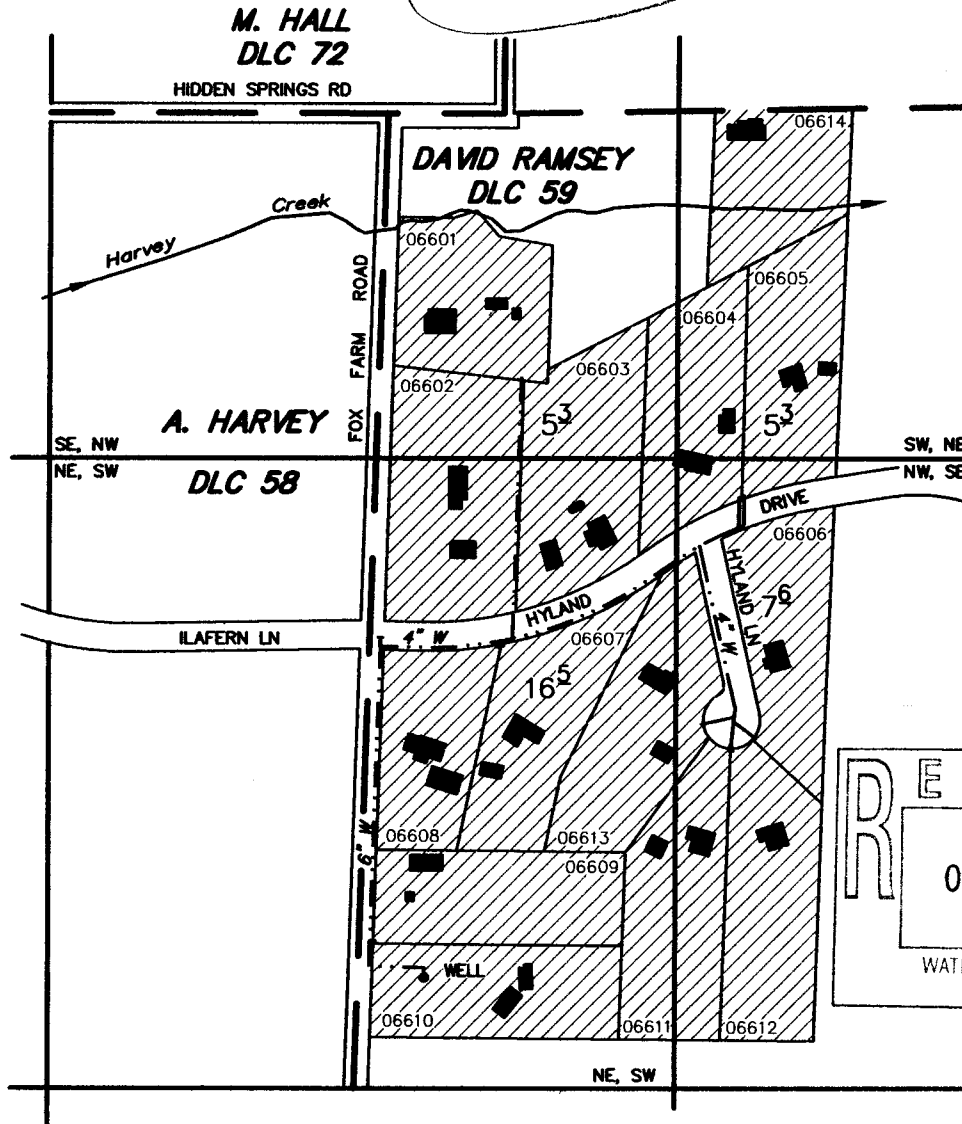
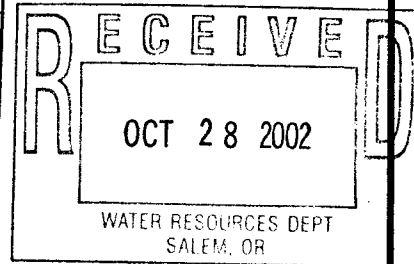


T3S, R3W, WM
 SW,NE & SE,NW & NE,SW & NW,SE
 SEC 16 24
 YAMHILL COUNTY



TAX MAP, 0303 24
 Tax Lots - 06601
 06602
 06603
 06604
 06605
 06606
 06607
 06608
 06609
 06610
 06611
 06612
 06613
 06614

--- X" W --- WATERLINE



WELL LOCATION: 1809' S and 83' E of NW Cor, DAVID RAMSEY DLC 59

Application to Appropriate Ground Water

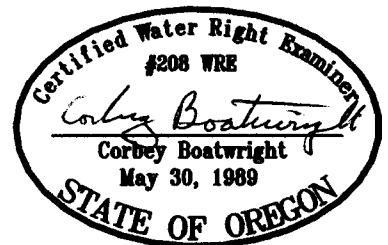
Application No. _____ Permit No. _____

Sunnycrest Meadows Water Association

October 24, 2002
 SCALE: 1" = 400'

NOTE: This map is for the purpose of identifying the location of water rights and has no intent to dimension or locate property ownership lines.

*app# G-15962
 Permit # G 15589*



expires - December 31, 2003