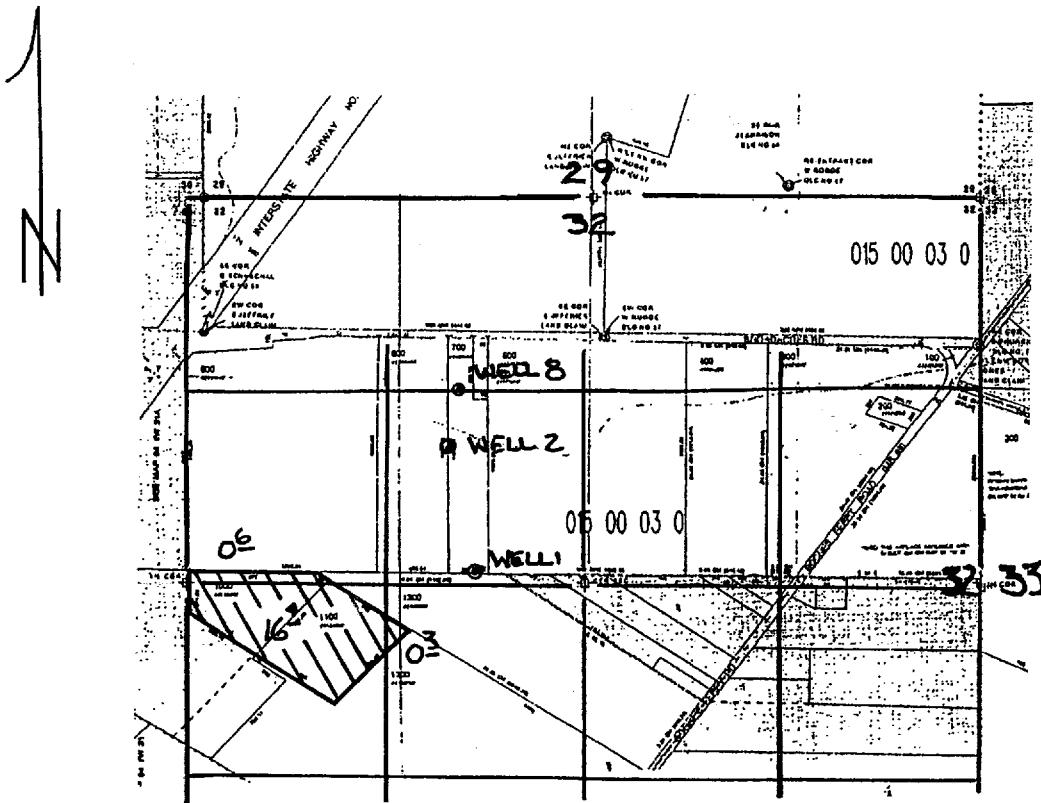


MAY 21 2003

APPLICATION MAP In the name of Tom DeArmond

Section 32 T4S R 1 W, WM



Well # 1: 60' N and 1950' E from the W $\frac{1}{4}$ corner sec. 32
Well # 2: 980' N and 1650' E from the W $\frac{1}{4}$ corner sec. 32
Well # 8: 1350' N and 1860' E from the W $\frac{1}{4}$ corner sec. 32

Scale 1" = 1320'

App No G-16011
Permit No G-15593