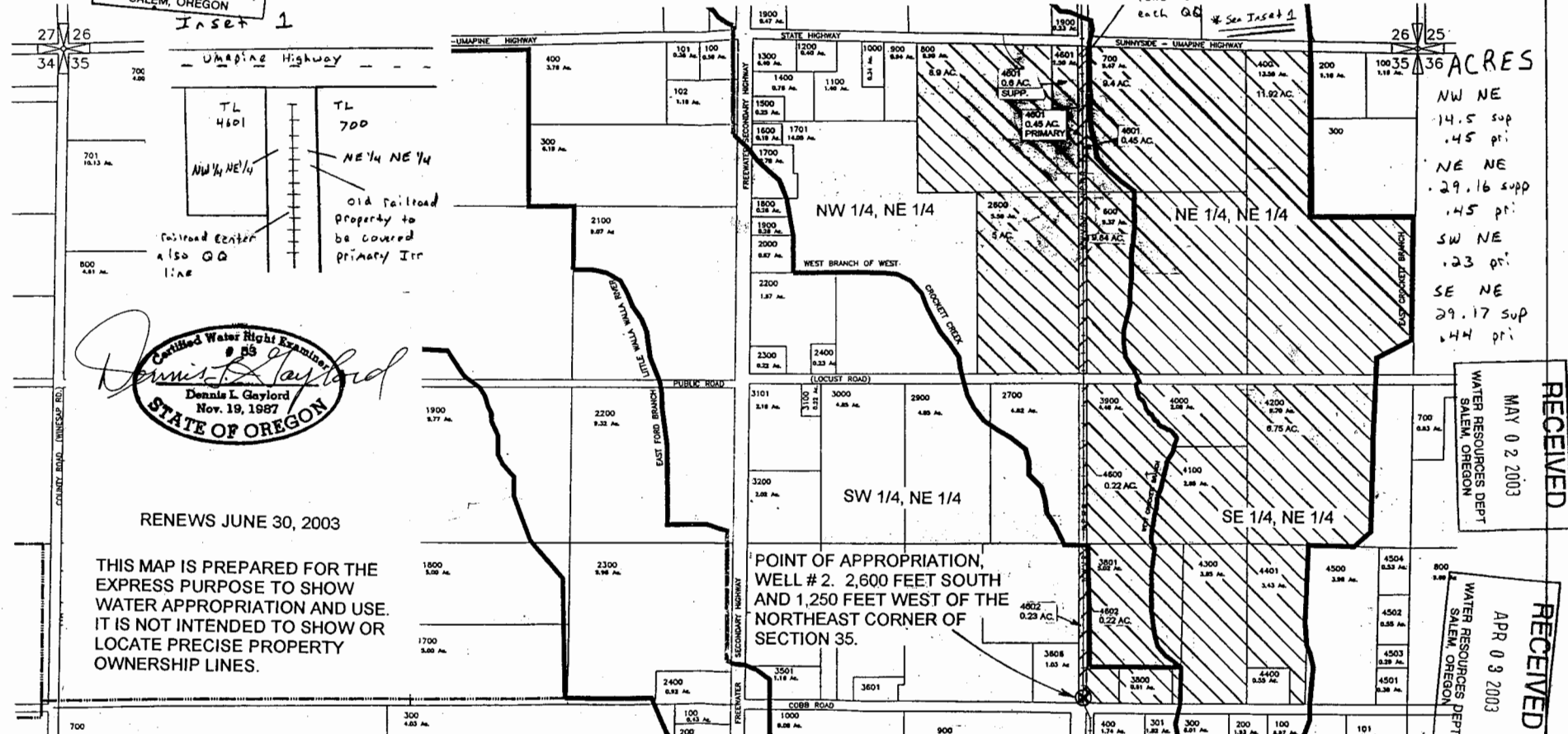


NORTH 1/2 SECTION 35 TOWNSHIP 6 NORTH, RANGE 35 EAST, W.M. UMATILLA COUNTY

RECEIVED
JUL 07 2003
WATER RESOURCES DEPT
SALEM, OREGON

Inset 1



36 ACRES

NW NE
14.5 sup
.45 pri

NE NE
.29.16 supp
.45 pri

SW NE
.23 pri

SE NE
29.17 sup
.44 pri

Dennis L. Gaylord
Certified Water Right Examiner
65
Dennis L. Gaylord
Nov. 19, 1987
STATE OF OREGON

RENEWS JUNE 30, 2003

THIS MAP IS PREPARED FOR THE EXPRESS PURPOSE TO SHOW WATER APPROPRIATION AND USE. IT IS NOT INTENDED TO SHOW OR LOCATE PRECISE PROPERTY OWNERSHIP LINES.

RECEIVED
MAY 02 2003
WATER RESOURCES DEPT
SALEM, OREGON

RECEIVED
APR 03 2003
WATER RESOURCES DEPT
SALEM, OREGON

- LEGEND**
- ☉ = AREA TO BE IRRIGATED FROM WELL # 2 + # 1
PRIMARY Irrigation
 - ☉ = AREA TO BE SUPPLEMENTALLY IRRIGATED FROM WELL # 2 + # 1
 - ☉ Well # 2

MAP TO ACCOMPANY WATER RIGHT APPLICATION
IRRIGATION AND SUPPLEMENTAL IRRIGATION
APPLICANT: WALTER ROLOFF

MAP BASE USED WITH PERMISSION FROM WALLA WALLA RIVER IRRIGATION DISTRICT

DENNIS L. GAYLORD, CWRE
71614 S.W. LAKE DRIVE
PENDLETON, OR 97801
541 - 276 - 6260
JUNE, 2002

© SCALE IN FEET

DWG 35N

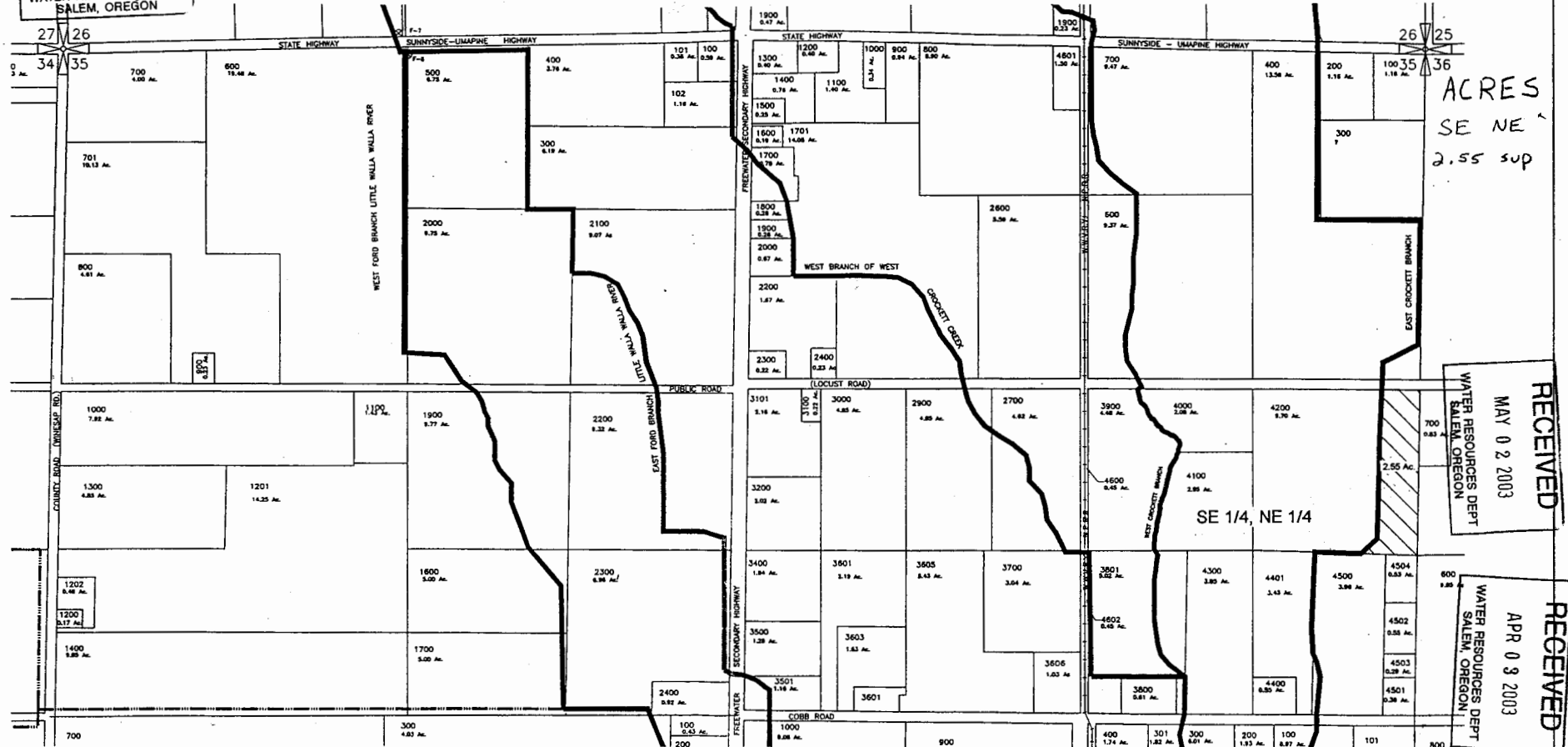
WALLA WALLA RIVER IRRIGATION DISTRICT

SCM Consultants, Inc. *Professional Engineers*
Hennrich, WA 99336
4378.015 4376-35N.DWG

11/29/00

NORTH 1/2 SECTION 35 TOWNSHIP 6 NORTH, RANGE 35 EAST, W.M. UMATILLA COUNTY

RECEIVED
JUL 07 2003
WATER RESOURCES DEPT
SALEM, OREGON



ACRES
SE NE
2.55 sup

RECEIVED
MAY 02 2003
WATER RESOURCES DEPT
SALEM, OREGON

RECEIVED
APR 03 2003
WATER RESOURCES DEPT
SALEM, OREGON

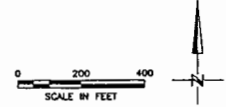
⊗ Area to be Supplementally
Irrigated from well # 1 + well # 2
2.55 acres SE 1/4 NE 1/4 sec 35

MAP TO ACCOMPANY WATER RIGHT APPLICATION
SUPPLEMENTAL IRRIGATION
APPLICANT: WALTER ROLOFF

MAP BASE USED WITH PERMISSION FROM WALLA WALLA RIVER IRRIGATION DISTRICT

WALLA WALLA RIVER IRRIGATION DISTRICT

Permit No. G-15612
App no G-16014 DWG 35N



SCM Consultants, Inc. Architects & Engineers
Kennewick, WA 99338

4376.015

4376-35N.DWG

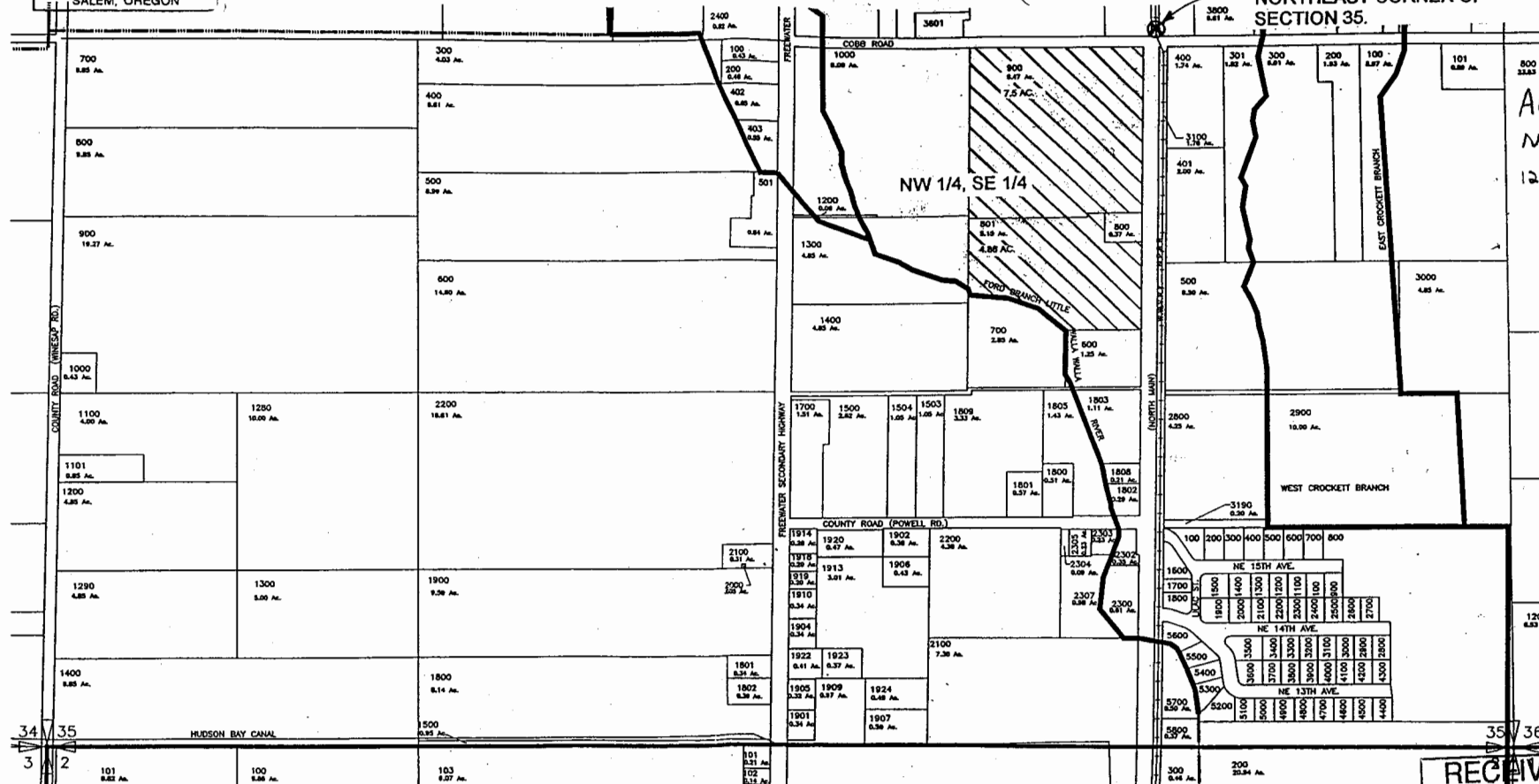
11/29/00

RECEIVED
 JUL 07 2003
 WATER RESOURCES DEPT
 SALEM, OREGON

SOUTH 1/2 SECTION 35
 TOWNSHIP 6 NORTH, RANGE 35 EAST, W.M.
 UMATILLA COUNTY

MAP SHEET TWO OF TWO

POINT OF APPROPRIATION,
 WELL # 2. 2,600 FEET SOUTH
 AND 1,250 FEET WEST OF THE
 NORTHEAST CORNER OF
 SECTION 35.



ACRES
 NW SE
 12.36 sup

- ⊗ Well # 2
- ⊘ Area to be Supplementally irrigated from well #1 & #2
 12.36 acres NW 1/4 SE 1/4 Sec 35

MAP TO ACCOMPANY WATER RIGHT APPLICATION
 IRRIGATION AND SUPPLEMENTAL IRRIGATION
 APPLICANT: WALTER ROLOFF

MAP BASE USED WITH PERMISSION FROM WALLA WALLA RIVER IRRIGATION DISTRICT

WALLA WALLA RIVER IRRIGATION DISTRICT

RECEIVED
 APR 03 2003
 WATER RESOURCES DEPT
 SALEM, OREGON

RECEIVED
 MAY 02 2003
 WATER RESOURCES DEPT
 SALEM, OREGON

SCALE IN FEET

DWG 35S

4376.015 4376-35S.DWG

11/29/02

app no G-16044 Permit NO. G-156d2

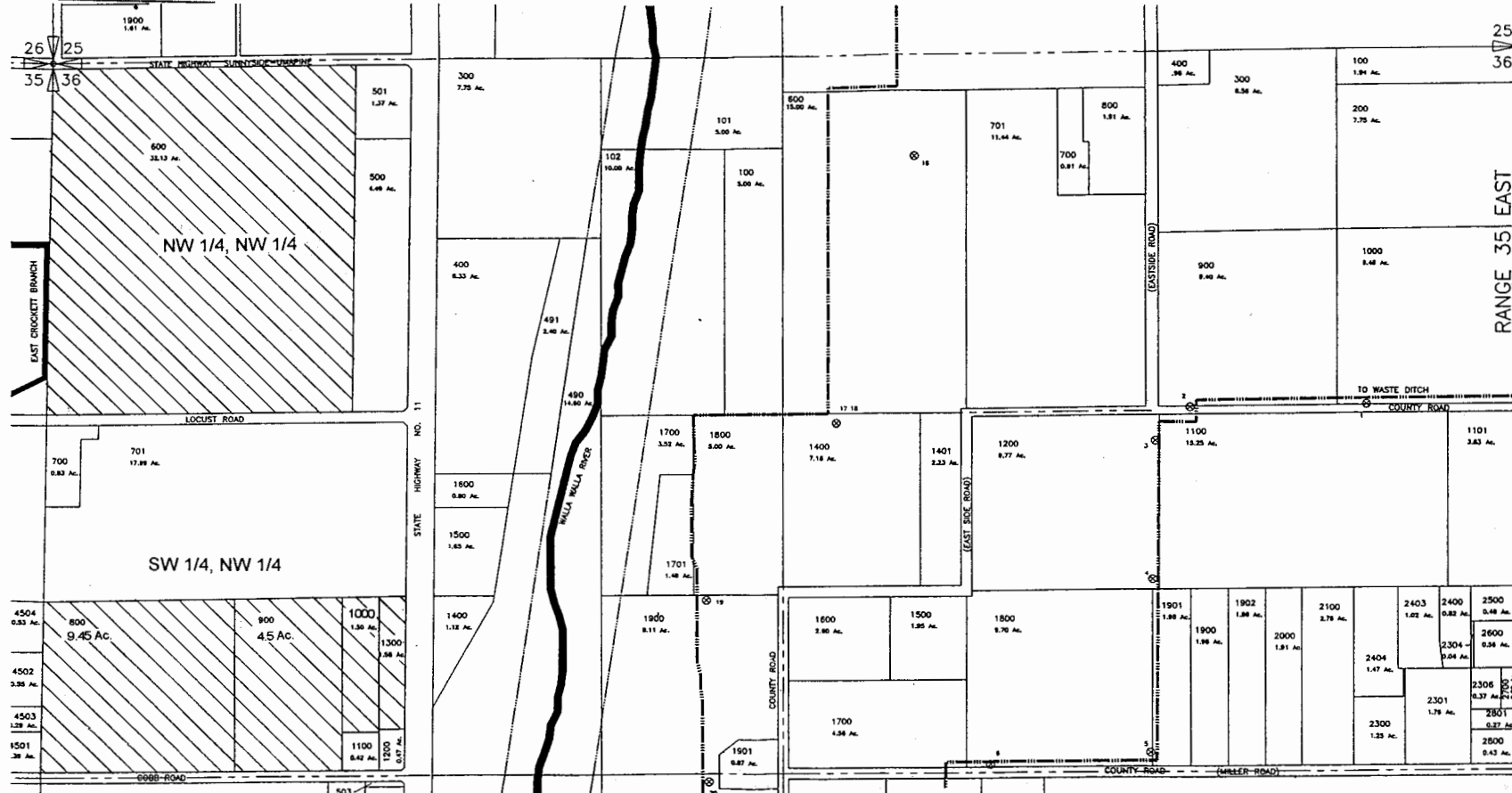
RECEIVED

JUL 07 2003

WATER RESOURCES DEPT
SALEM, OREGON

NORTH 1/2 SECTION 36
TOWNSHIP 6 NORTH, RANGE 35 EAST, W.M.
UMATILLA COUNTY

MAP SHEET THREE OF FOUR



ACRES
NW NW
32.13 sup
SW NW
17.03 sup

RECEIVED
MAY 02 2003
WATER RESOURCES DEPT
SALEM, OREGON

RECEIVED
APR 03 2003
WATER RESOURCES DEPT
SALEM, OREGON

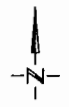
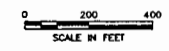
MAP TO ACCOMPANY WATER RIGHT APPLICATION
SUPPLEMENTAL IRRIGATION
APPLICANT: WALTER ROLOFF

Area to be Supplementally
Irrigated from well #1 + #2
32.13 acres NW 1/4 NW 1/4 sec 36
17.03 acres SW 1/4 NW 1/4 sec 36

MAP BASE USED WITH PERMISSION FROM WALLA WALLA RIVER IRRIGATION DISTRICT

WALLA WALLA RIVER IRRIGATION DISTRICT

Permit NO. G-1561
app. no 6-16044 DWG 36N



SCM Consultants, Inc. Architects & Engineers
Kennewick, WA 99338
4376.015 4376-36N.DWG

11/29/00

SOUTH 1/2 SECTION 36 TOWNSHIP 6 NORTH, RANGE 35 EAST, W.M. UMATILLA COUNTY

RECEIVED

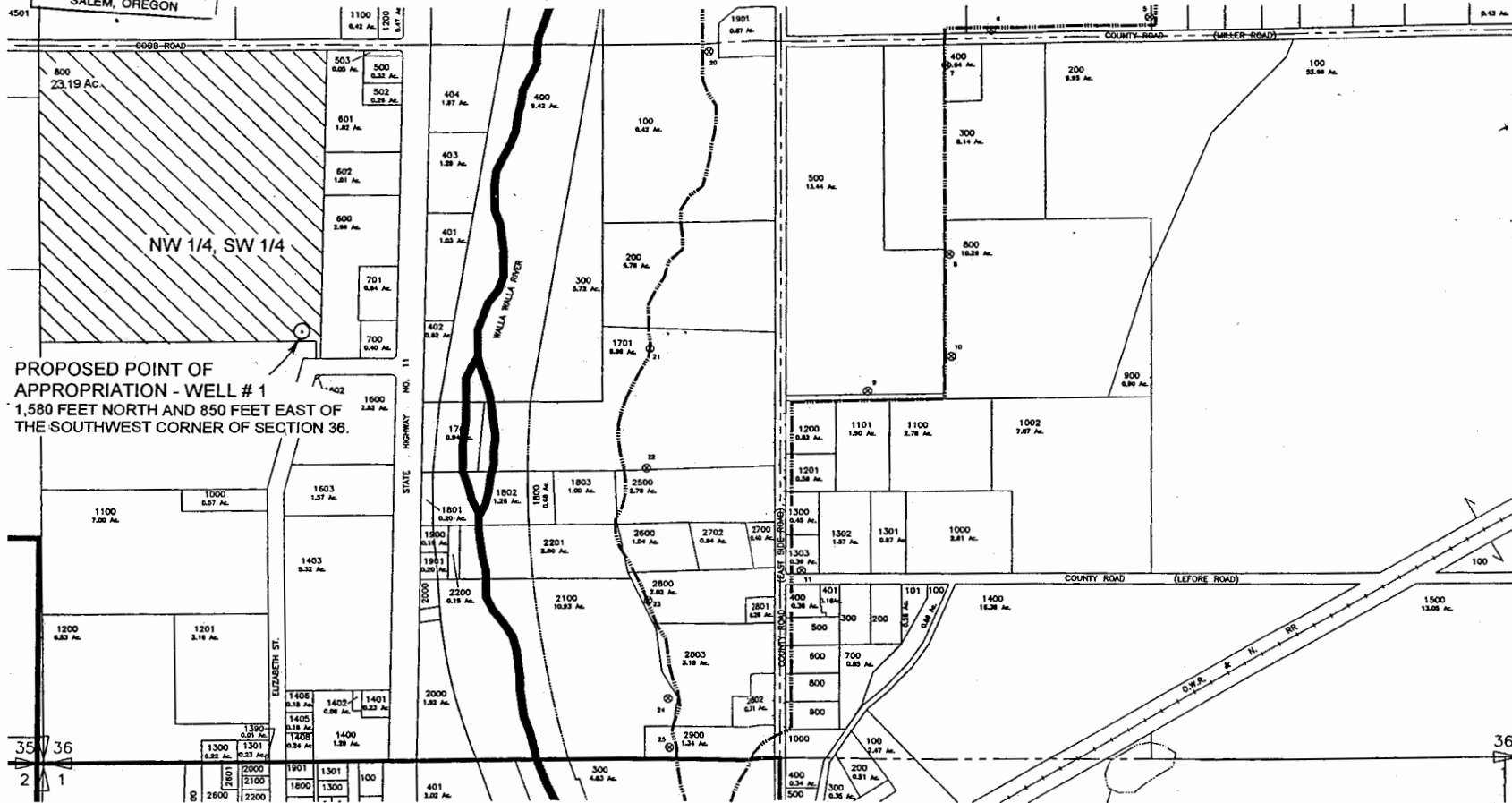
JUL 07 2003

WATER RESOURCES DEPT
SALEM, OREGON

ACRES
NW SW
23.19 ssp

RECEIVED
MAY 02 2003
WATER RESOURCES DEPT
SALEM, OREGON

RECEIVED
APR 09 2003
WATER RESOURCES DEPT
SALEM, OREGON



PROPOSED POINT OF APPROPRIATION - WELL # 1
1,580 FEET NORTH AND 850 FEET EAST OF
THE SOUTHWEST CORNER OF SECTION 36.

○ Well # 1

⊘ Area to be Supplementally
Irrigated from Well # 1 & # 2

MAP TO ACCOMPANY WATER RIGHT APPLICATION
SUPPLEMENTAL IRRIGATION
APPLICANT: WALTER ROLOFF

23.19 acres NW 1/4 SW 1/4 Sec 36 MAP BASE USED WITH PERMISSION FROM WALLA WALLA RIVER IRRIGATION DISTRICT

app no G-16044
Permit NO. G-15613

DWG 36S

WALLA WALLA RIVER IRRIGATION DISTRICT

SCM Consultants, Inc. Architects & Engineers
Hermiston, OR 97131

4376.015

4376-36S.DWG

11/29/00