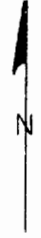
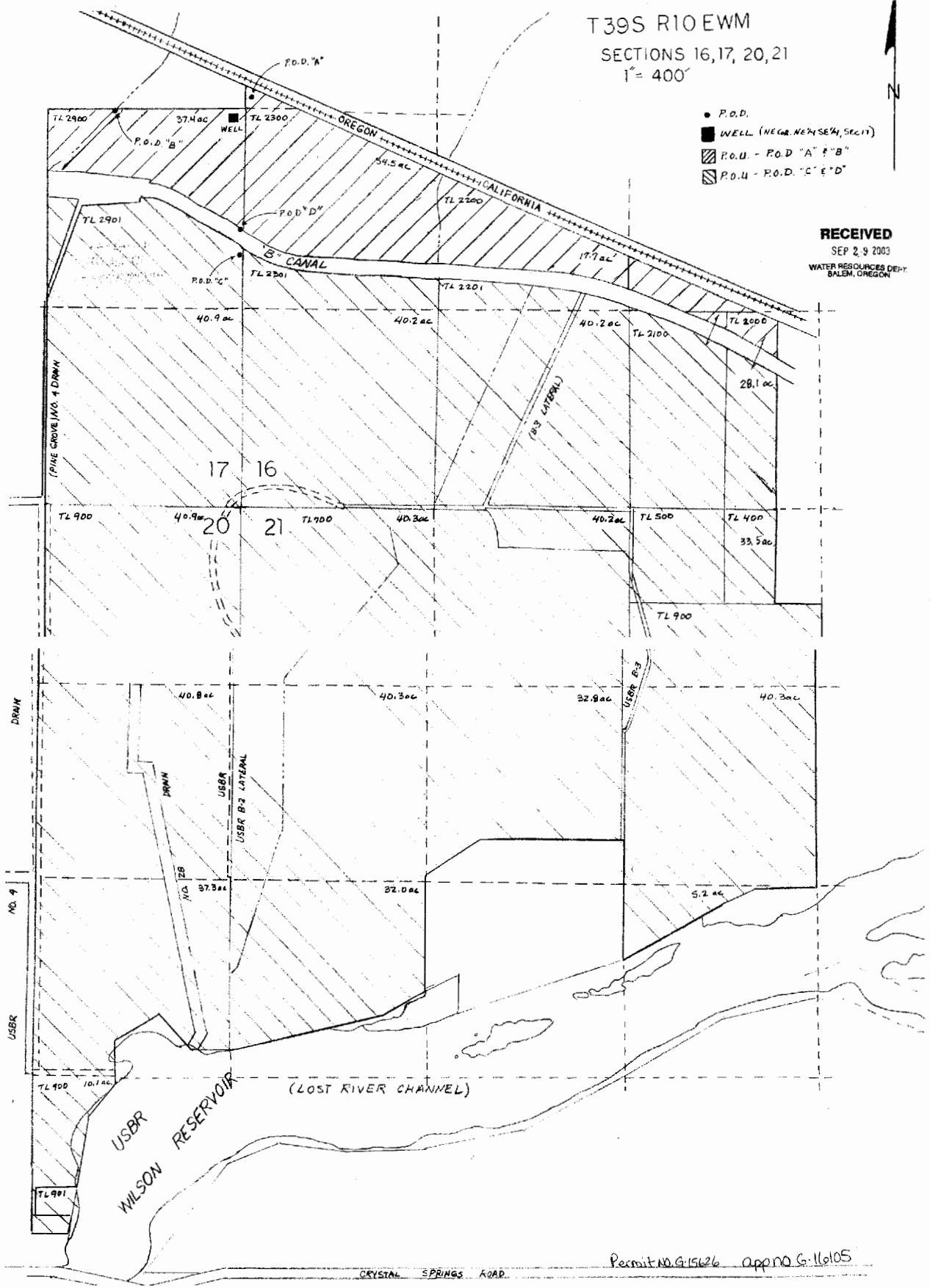


T39S R10EWM
 SECTIONS 16, 17, 20, 21
 1" = 400'



- P.O.D.
- WELL (NEGR. NE/4SE/4, SEC. 17)
- ▨ P.O.U. - P.O.D. "A" & "B"
- ▩ P.O.U. - P.O.D. "C" & "D"

RECEIVED
 SEP 29 2003
 WATER RESOURCES DEPT.
 BALEM, OREGON



Permit NO. G-15626 appn G-116105

Legal Description for location of well #1:

Northeast corner of NE1/4 SE1/4 Section 17, Township 39 South, Range 10 East of the Willamette Meridian

Acreage per 1/4 1/4, lying below the USBR "B" Canal, was taken from Klamath Irrigation District's adjudication map. The quarter-quarters are not exact 40's as determined by survey.

Acres per 1/4 1/4

	Acres
Section 16, T39S, R10 EWM	
SW1/4 SE1/4	28.1
NE1/4 SW1/4	17.7
SW1/4 NW1/4	0.8
NW1/4 SW1/4	33.7
SW1/4 SW1/4	40.2
SE1/4 SW1/4	40.2
Section 17, T39S, R10 EWM	
NE1/4 SE1/4	37.4
SE1/4 SE1/4	40.9
Section 20, T39S, R10 EWM	
NE1/4 NE1/4	40.9
SE1/4 NE1/4	40.8
NE1/4 SE1/4	37.3
SE1/4 SE1/4	10.1
Section 21, T39S, R10 EWM	
NW1/4 NE1/4	33.5
SW1/4 NE1/4	40.3
NW1/4 SE1/4	5.2
NE1/4 NW1/4	40.2
NW1/4 NW1/4	40.3
SE1/4 NW1/4	32.8
SW1/4 NW1/4	40.3
NW1/4 SW1/4	32.0
Total	632.7

App. NO. G-16105
Permit NO. G-15626

RECEIVED

SEP 29 2003

WATER RESOURCES DEPT.
SALEM, OREGON