

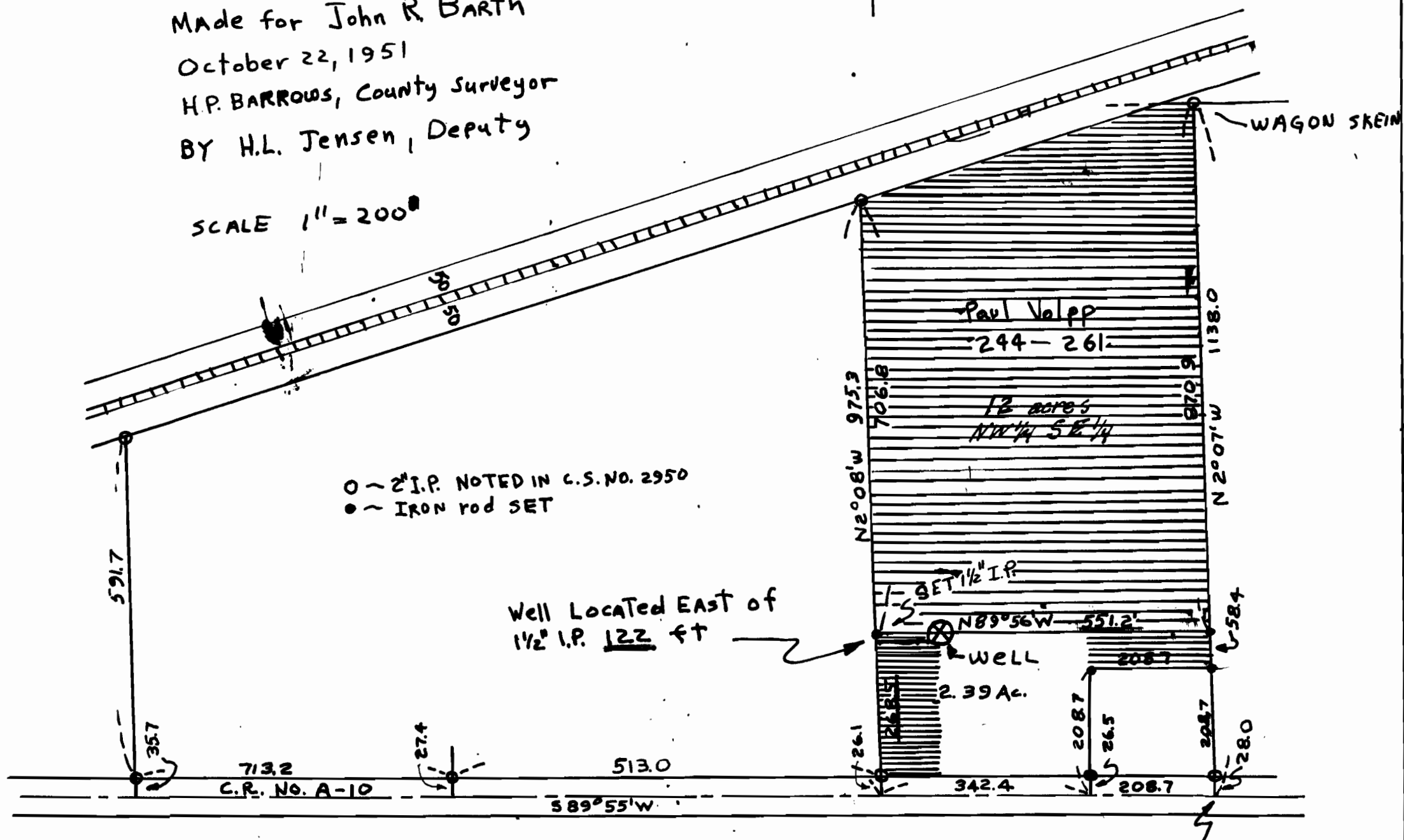
SKETCH of SURVEY IN
 ANDERSON SMITH D.L.C. #64
 Section 6, T.1N, R.2W, W.M.

Made for John R. Barth
 October 22, 1951
 H.P. BARROWS, County Surveyor
 BY H.L. Jensen, Deputy

SCALE 1" = 200'

6-1N2-4

T.1N, R.2W, W.M.
 Section 6.



Application No. G-1706
 Permit No. G-1565

SAID To Be 589° 55' W
 1151.7 ft. from S.E. Cor.
 of Anderson Smith
 D.L.C. No. 64