

REVISED

JUN 07 2003

WASCO TITLE INC.

WASCO TITLE INC.
512 Washington Street
The Dalles OR 97058

Scale = 1" = 1320'

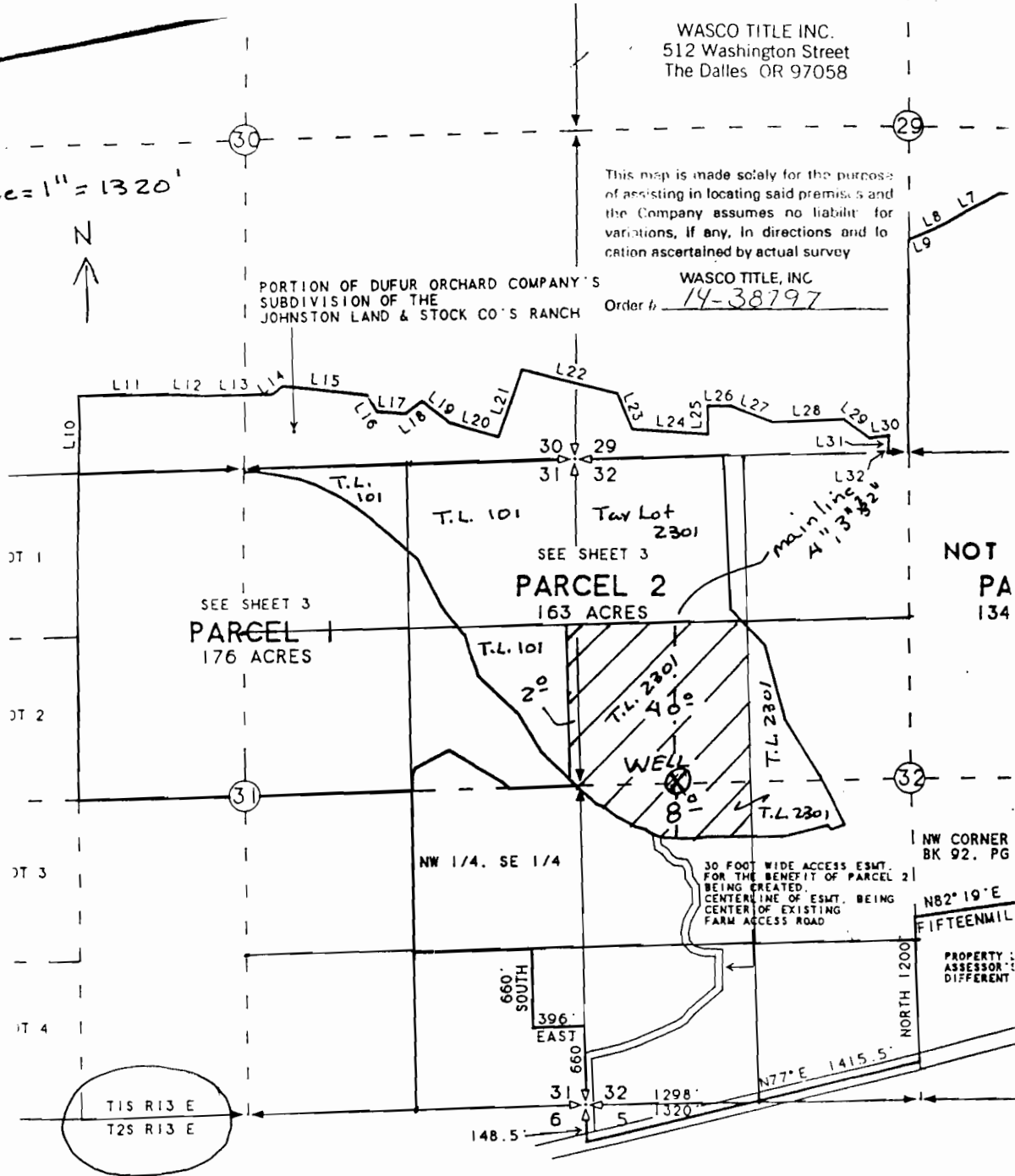


This map is made solely for the purpose of assisting in locating said premises and the Company assumes no liability for variations, if any, in directions and location ascertained by actual survey

PORTION OF DUFUR ORCHARD COMPANY'S
SUBDIVISION OF THE
JOHNSTON LAND & STOCK CO'S RANCH

WASCO TITLE, INC
Order # 14-38797

Lateral lines of mainline will be 3/4" lines for sprinklers (micro)



NOT
PA
134

NW CORNER
BK 92, PG

N82°19'E
FIFTEENMIL

PROPERTY
ASSESSOR'S
DIFFERENT

App no G 16026

LINE	BEARING	DISTANCE	LINE	BEARING	DISTANCE
L 1	S 00° 59' 00" W	791.40'	L 18	N 53° 35' 00" E	1
L 2	N 81° 33' 00" W	405.30'	L 19	S 51° 00' 00" E	2
L 3	S 85° 25' 00" W	274.40'	L 20	S 72° 55' 00" E	4
L 4	N 74° 51' 00" W	539.70'	L 21	N 19° 00' 00" E	5
			L 22	S 75° 05' 00" E	-

WELL LOCATION IS 790 feet East of
West 1/4 Corner Section 32