

MEASURED MECH. WHEEL  
 WELL IS LOCATED: 127'S & 302'E OF  
~~CENTER~~ OF SECT. 35, S1N 28E  
 1/16 CORNER OR

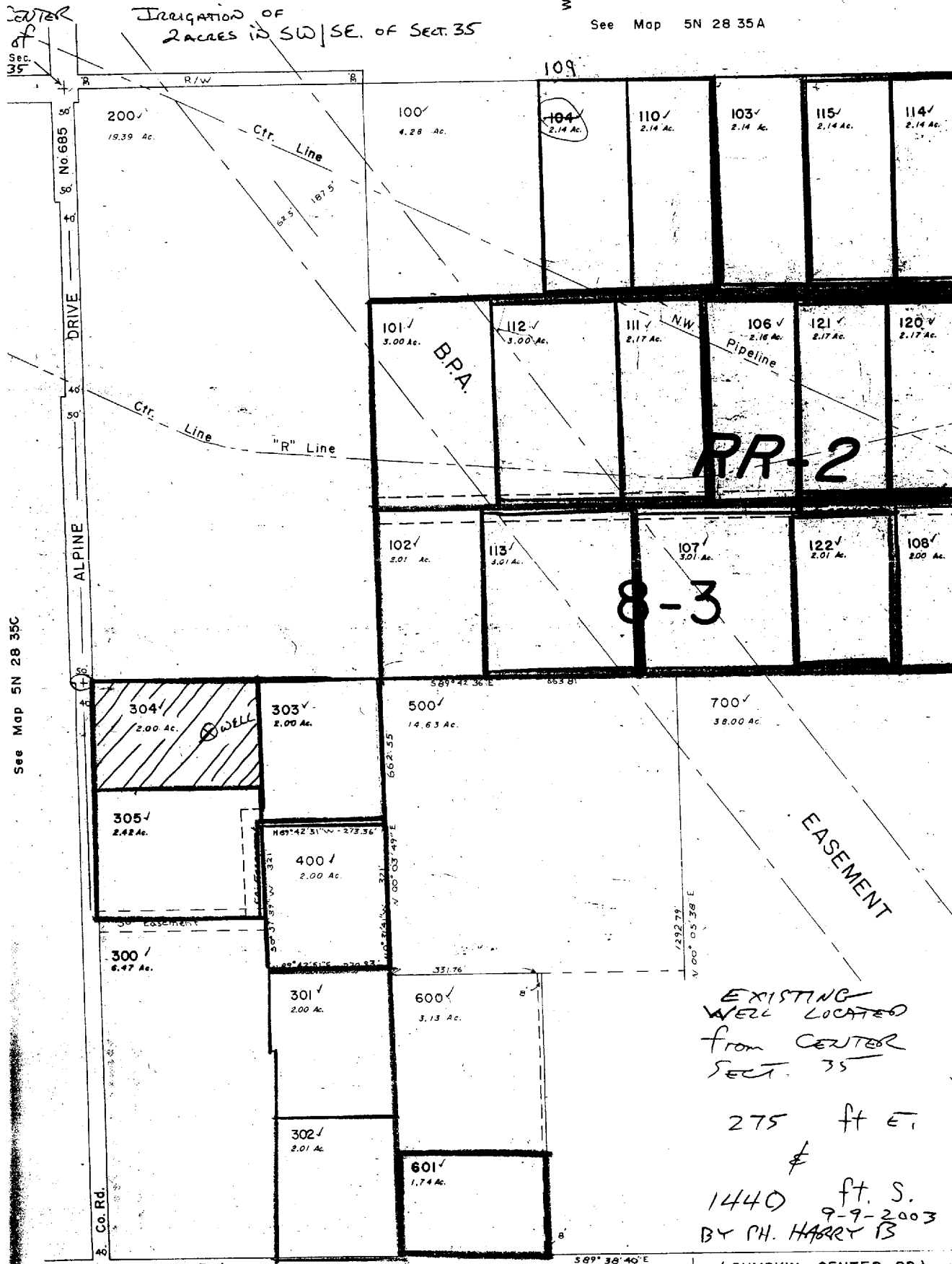
1/4 CORN SW 1/4 CORNER OF SE 1/4 OF  
 SECT. 35

SE 1/4 Sec. 35 T.5N. R.28E.W.  
 UMATILLA COUNTY

RECEIVED  
 SEP 08 2003  
 WATER RESOURCES DEPT.  
 SALEM, OREGON

App # G-16078  
 Permit #

See Map 5N 28 35A



See Map 5N 28 35C

EXISTING  
 WELL LOCATED  
 FROM CENTER  
 SECT. 35

275 ft E.

1440 ft S.  
 9-9-2003  
 BY PH. HARRY IS

app no G-16078