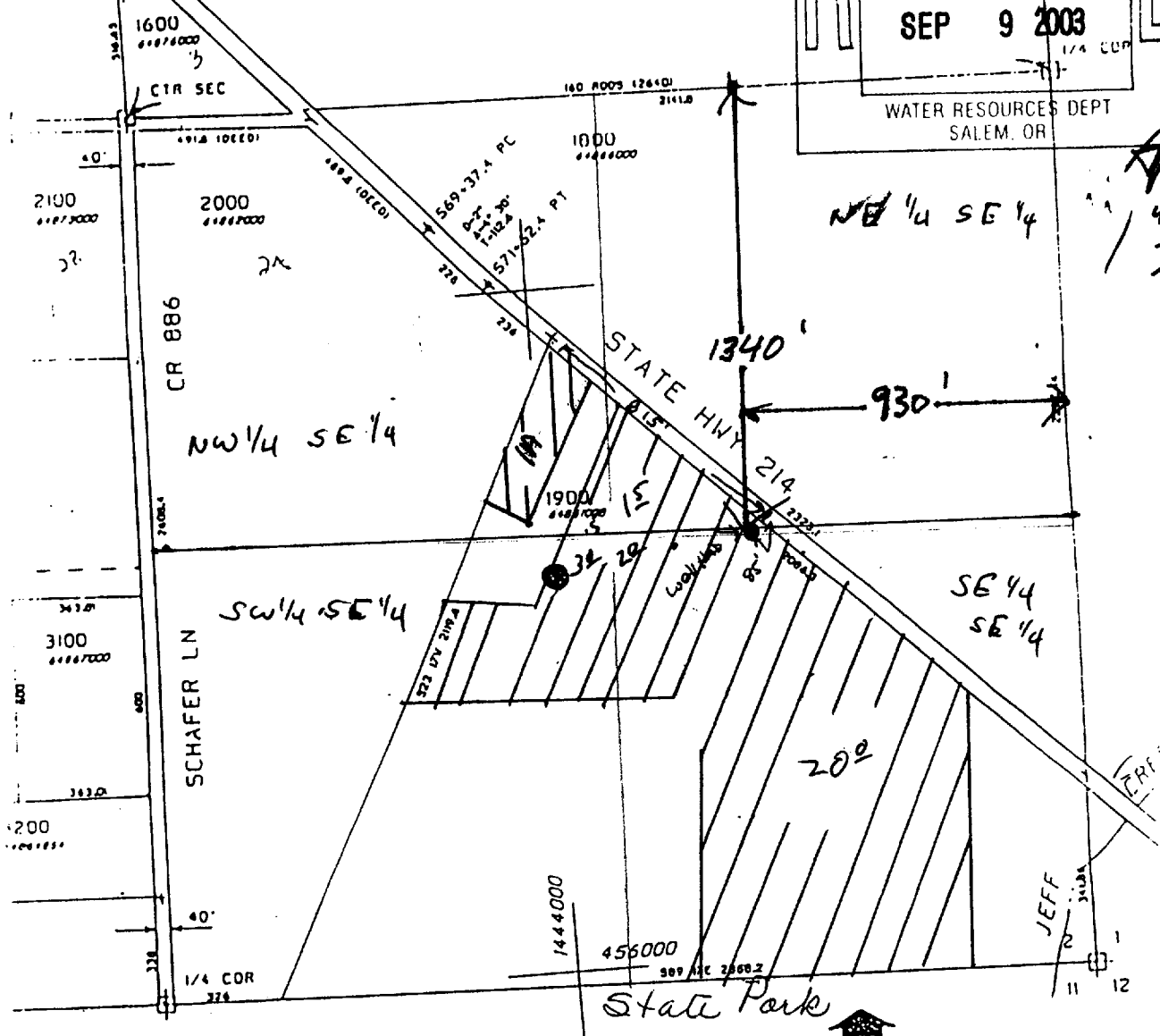


WORKING COPY
093 00 08 0

RECEIVED
SEP 9 2003
WATER RESOURCES DEPT
SALEM, OR



Approximate
1/4 = 500'

SEE MAP 08 1E 12

KEY TITLE COMPANY
THIS COPY OF ASSESSOR'S MAP IS PROVIDED SOLELY TO ASSIST IN LOCATING SUBJECT PROPERTY. NO LIABILITY IS ASSUMED BY KEY FOR DISCREPANCIES IN THIS MAP AS OUTLINED AND THE ACCOMPANYING...

RECEIVED
SEP 9 2003
WATER RESOURCES DEPT
SALEM, OR

RECEIVED
SEP 9 2003
WATER RESOURCES DEPT
SALEM, OR

app no
G-16079
Permit no
G-15680