

APPLICATION FOR A PERMIT TO
APPROPRIATE GROUND WATER

6-16144

IN THE NAME OF
SUSAN L. DIBBLE

IN THE B.W. WILSON D.L.C. NO. 64
SE 1/4, SECTION 30, TOWNSHIP 12 SOUTH,
RANGE 5 WEST W.M.
BENTON COUNTY, OREGON
OCTOBER 25, 2003



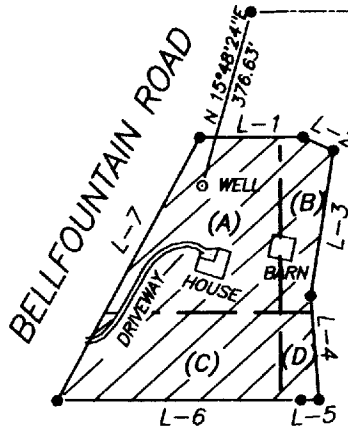
THIS MAP IS FOR THE PURPOSE OF OBTAINING A
WATER RIGHT AND IS NOT INTENDED TO PROVIDE
LEGAL DIMENSIONS FOR LOCATIONS OF PROPERTY
BOUNDARIES

NARRATIVE

This map was generated from
"PROPERTY LINE ADJUSTMENT FOR
SUSAN L. DIBBLE" dated June 18,
2001 on file in the Benton County
Surveyor's Office, C.S. File NO. 9657

S.W. CORNER
D.L.C. NO. 62

AIRPORT AVENUE



TAX LOT 1105 = 5.00 ACRES

- (A) NW 1/4, SE 1/4 = 2.05 ACRES
- (B) NE 1/4, SE 1/4 = 0.68 ACRES
- (C) SW 1/4, SE 1/4 = 1.73 ACRES
- (D) SE 1/4, SE 1/4 = 0.32 ACRES

TOTAL 4.78 ACRES TO IRRIGATE

COURSE	BEARING	DISTANCE
L-1	N 89°59'49"E	215.88'
L-2	S 65°23'47"E	69.01'
L-3	S 08°53'59"W	307.18'
L-4	S 04°25'18"E	216.87'
L-5	N 89°58'17"W	38.10'
L-6	N 89°59'20"W	507.59'
L-7	N 28°30'45"E	623.99'

RECEIVED

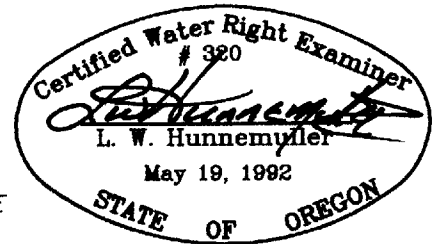
DEC 03 2003

WATER RESOURCES DEPT.
SALEM, OREGON

SURVEYED BY:
L. W. HUNNEMULLER
3055 N.E. LANCASTER
CORVALLIS, OR 97330
PHONE: (541) 757-7614

LEGEND

- MONUMENT OF RECORD
 - PROJECTED 1/16 SECTION LINE
- SCALE 1 INCH = 400 FEET



H0701

Permit no. G 15692