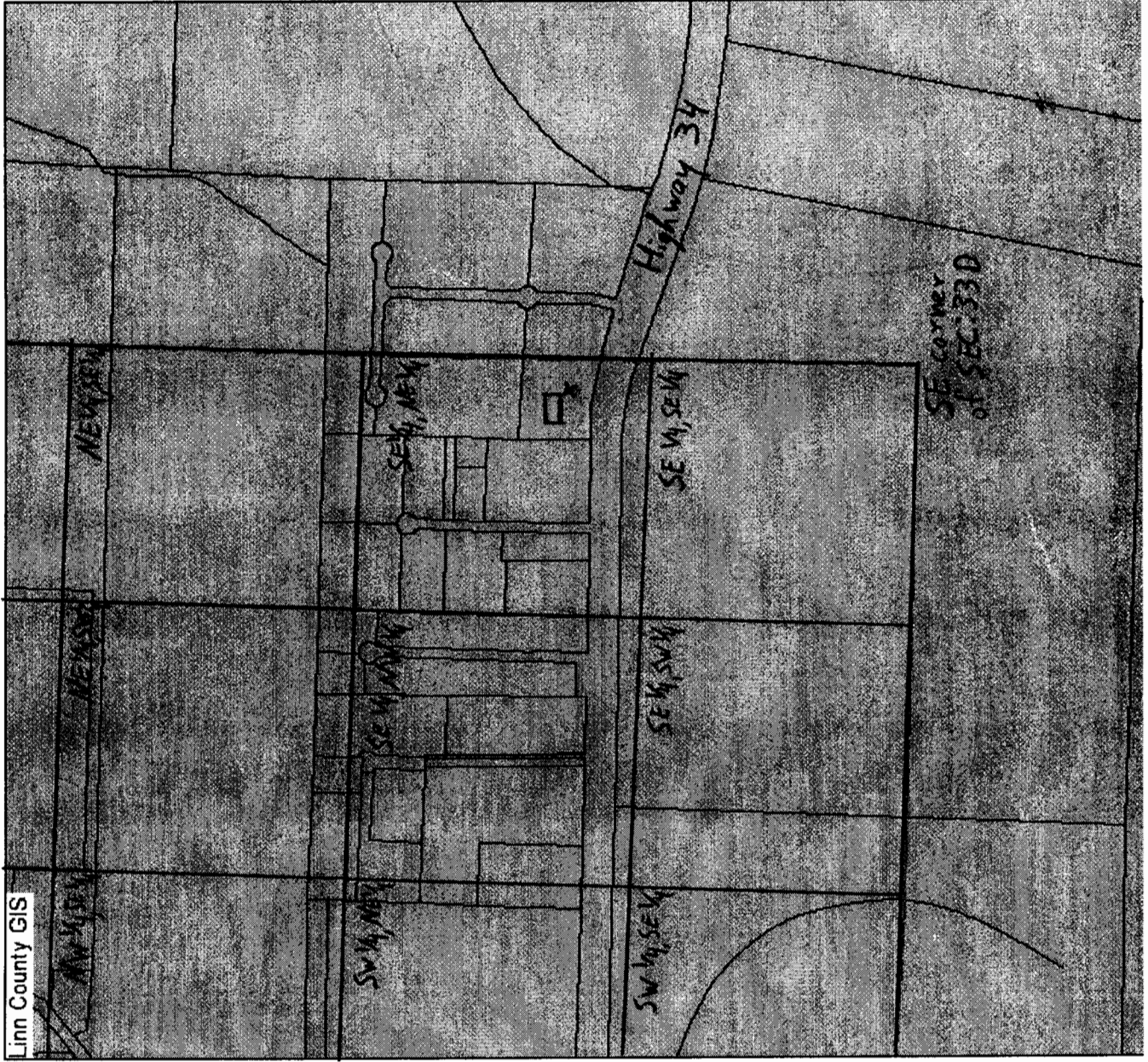


T: 11S R: 04W SEC: 33D Tax Lot: 2900



Linn County in
Willamette Basin

Scale
1" = 800 feet

App no G-16125
Permit no. G-15719

44°34'3" Latitude
-123°10'22" Longitude
→ POD Coordinates

□ = 33472
Texas St. SW (POU)

x = well (POD)

→ 150' West and
1700' North of
Southeast corner
of Section 33D

