

PREPARED FOR
USE ONLY.

SECTION 13 T.40S. R.09E. W.M.
KLAMATH COUNTY

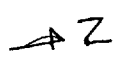
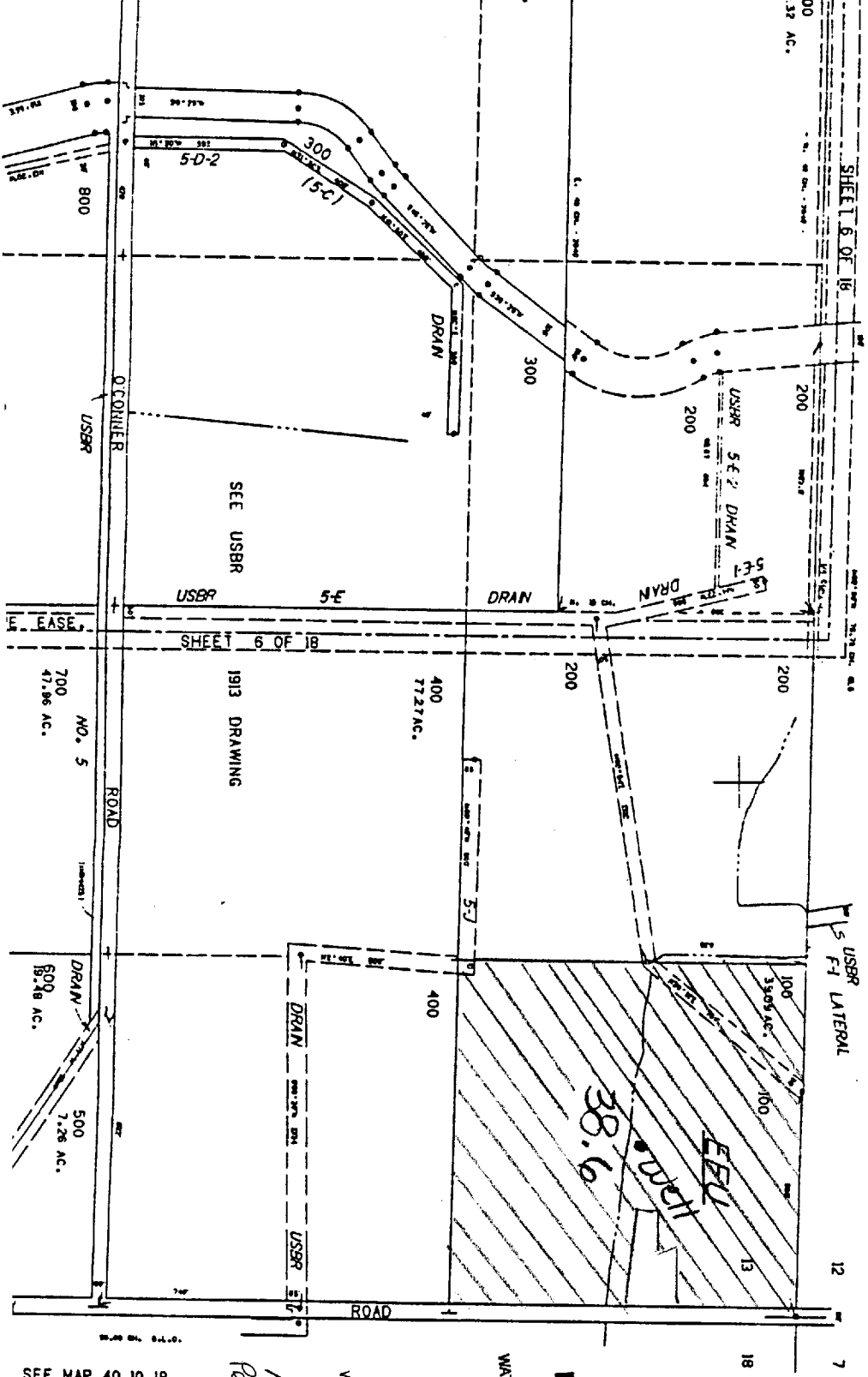
SCALE=1"=400'

SEE MAP 40 09 12

Well loc: 600 feet South and
600 feet West from the
NE corner Section 13.

40 09 13

40-9e13



RECEIVED
MAY 06 2003
WATER RESOURCES DEPT.
SALEM, OREGON

RECEIVED
MAY 27 2003
WATER RESOURCES DEPT.
SALEM, OREGON

App # G-16000
Permit # G-16000

SEE MAP 40 10 18