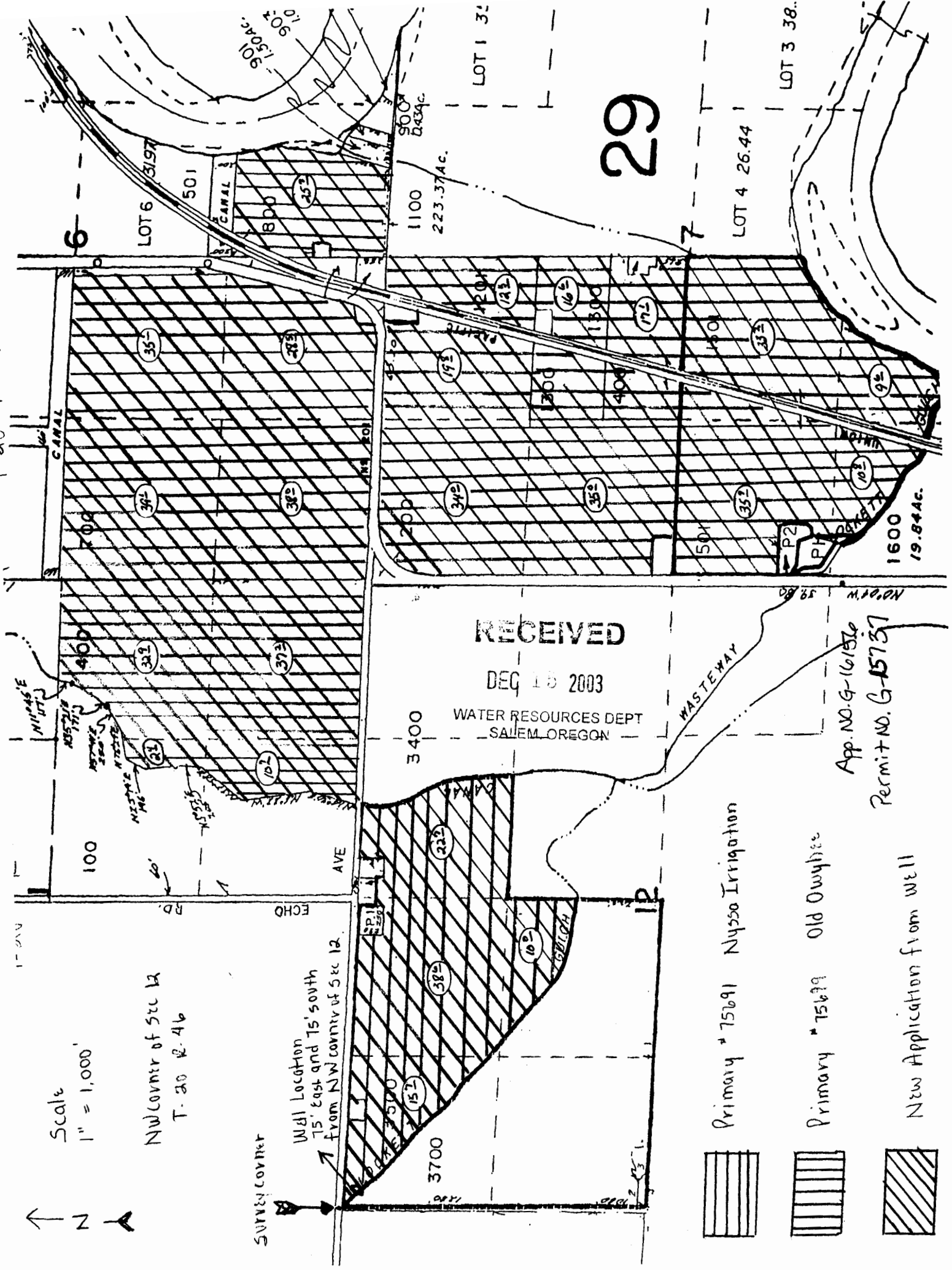


Scale  
1" = 1,000'

NW corner of Sec 12  
T. 20 R. 46


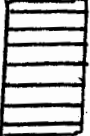

Well Location  
75' East and 75' South  
from NW corner of Sec 12.

SURVEY CORNER



29

RECEIVED  
DEC 16 2003  
WATER RESOURCES DEPT  
SALEM OREGON

-  Primary # 75691 Nuyso Irrigation
-  Primary # 75699 Old Owyhee
-  New Application from well

App. NO. G-161576  
Permit NO. G-15737