

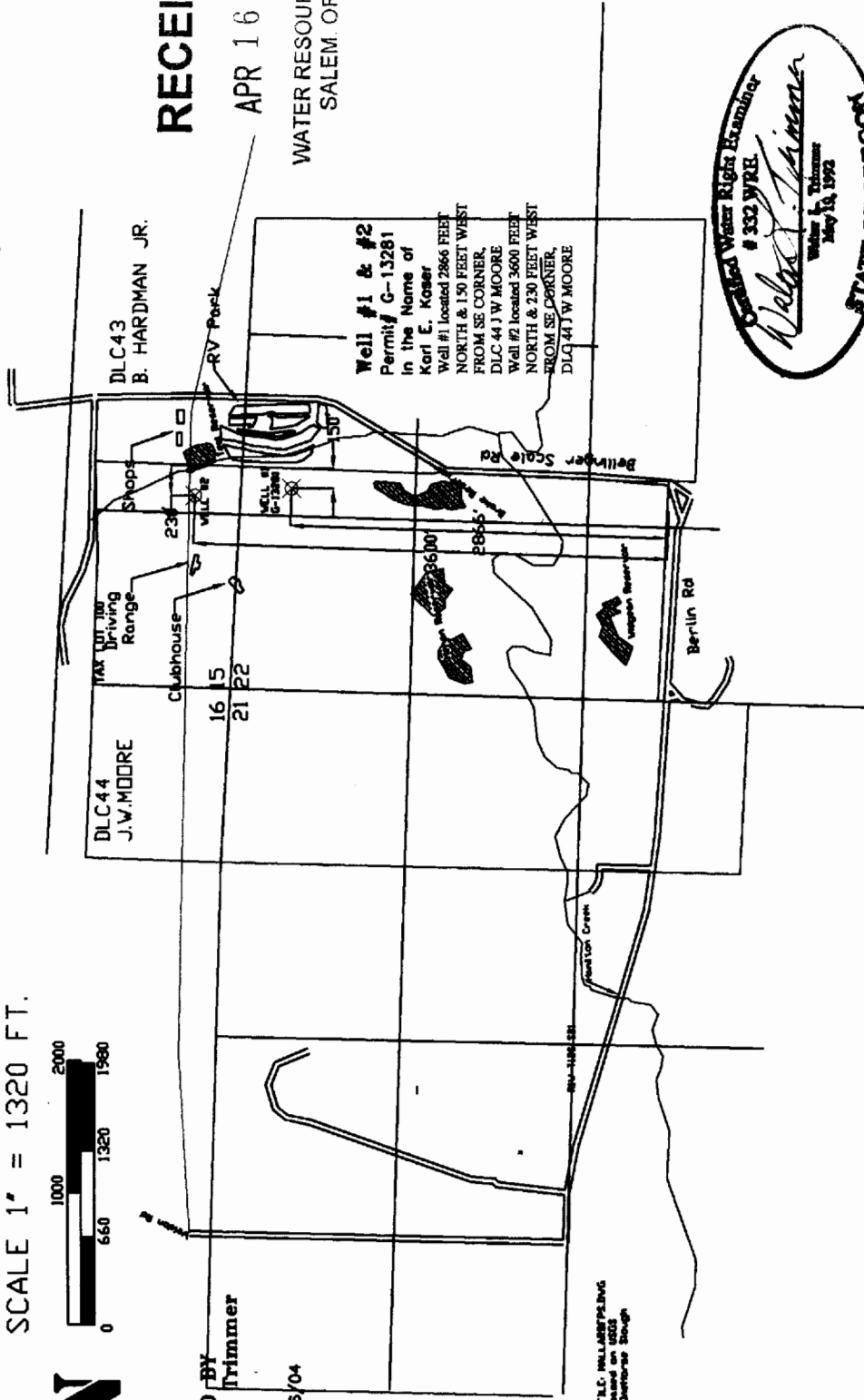
Groundwater Application G-16143

TOWNSHIP 12 SOUTH RANGE 1 WEST, W.M.

SCALE 1" = 1320 FT.



PREPARED BY
 Walter L. Trimmer
 CWRE/332
 9/7/2003
 changed 4/6/04



WATER RESOURCES DEPT.
 SALEM, OREGON

RECEIVED

APR 16 2004



EXP 6/30/04

Application G-16143