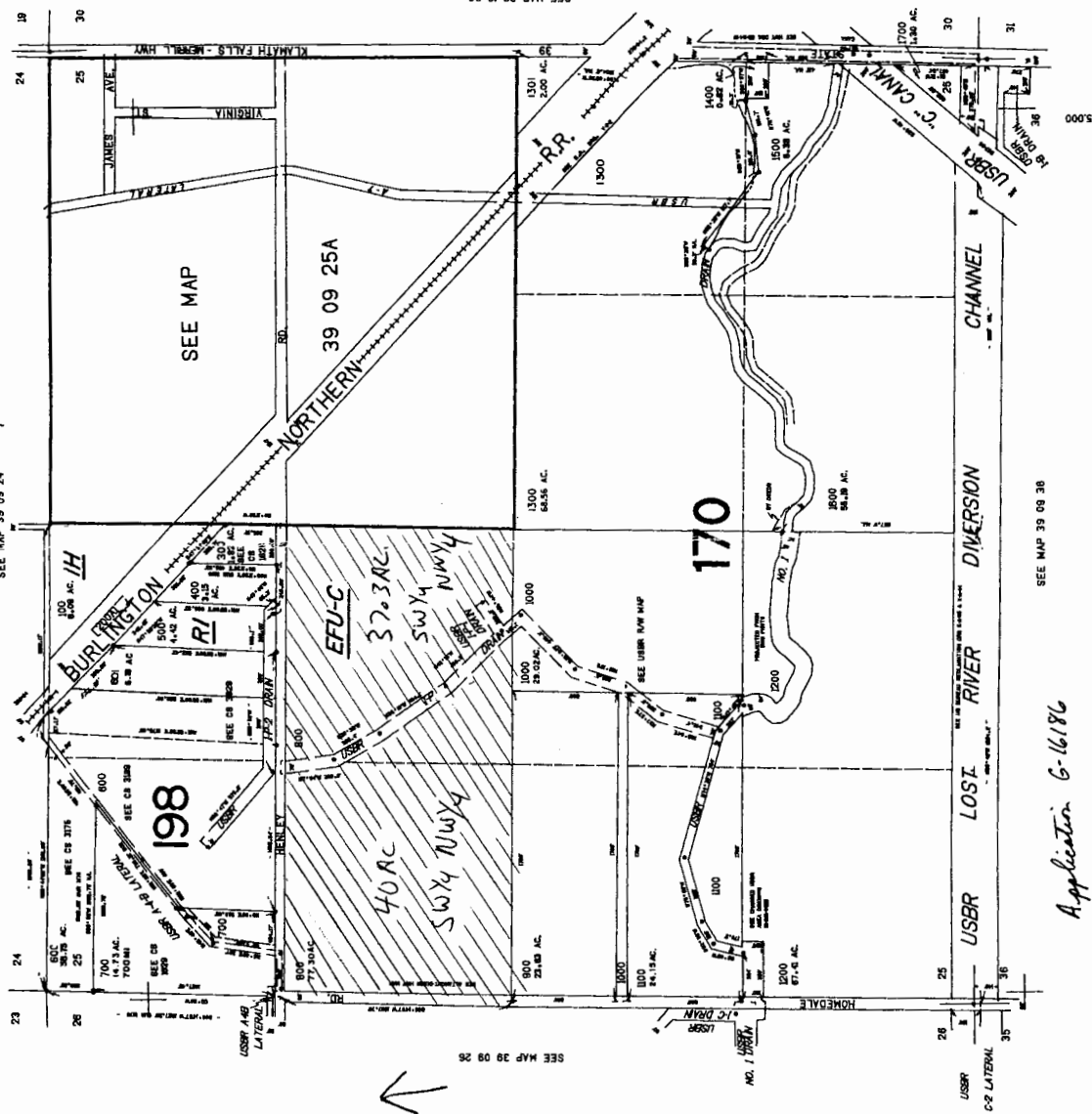


(1 of 6)

39 09 25
& INDEX

SECTION 25 T.39S. R.09E. WM.
KLAMATH COUNTY
1" = 400'

THIS MAP WAS PREPARED FOR
ASSESSMENT PURPOSE ONLY



N
↑

RECEIVED
FEB 10 2004
WATER RESOURCES DEPT
SALEM, OREGON

175.00
39 09 25
& INDEX

Application G-16186

(2 of 6)

39 09 26

SECTION 26 T.39S. R.09E. WM.
KLAMATH COUNTY

THIS MAP WAS PREPARED FOR
ASSESSMENT PURPOSE ONLY

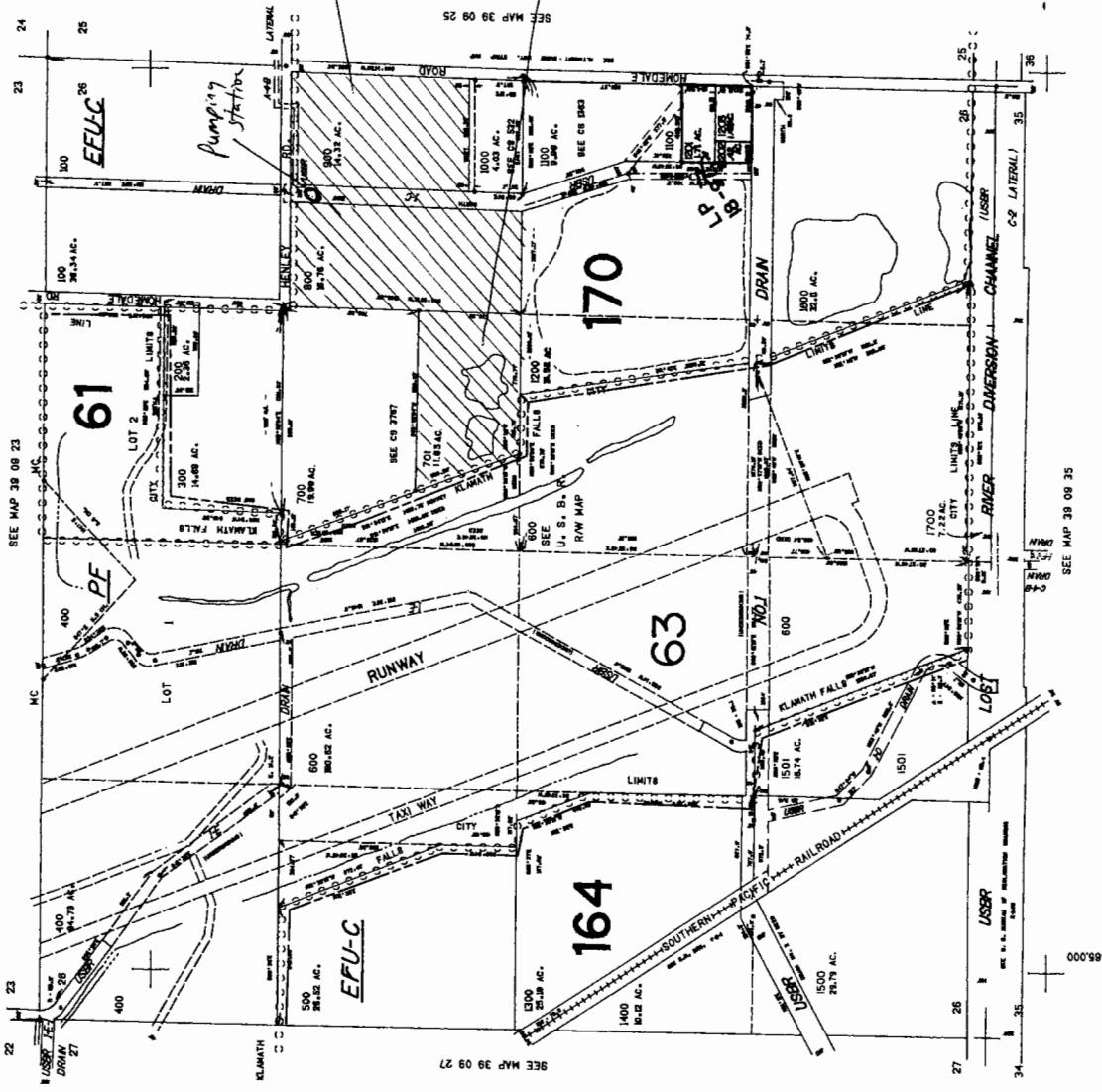
1"=400'

1" = 400'

N ↑

SE 1/4 NE 1/4
31.08 AC.

SW 1/4 NE 1/4
11.83 AC



39 09 26

SEE MAP 39 09 35

SEE MAP 39 09 27

SEE MAP 39 09 23

SEE MAP 39 09 25

F405 R9E
See 24

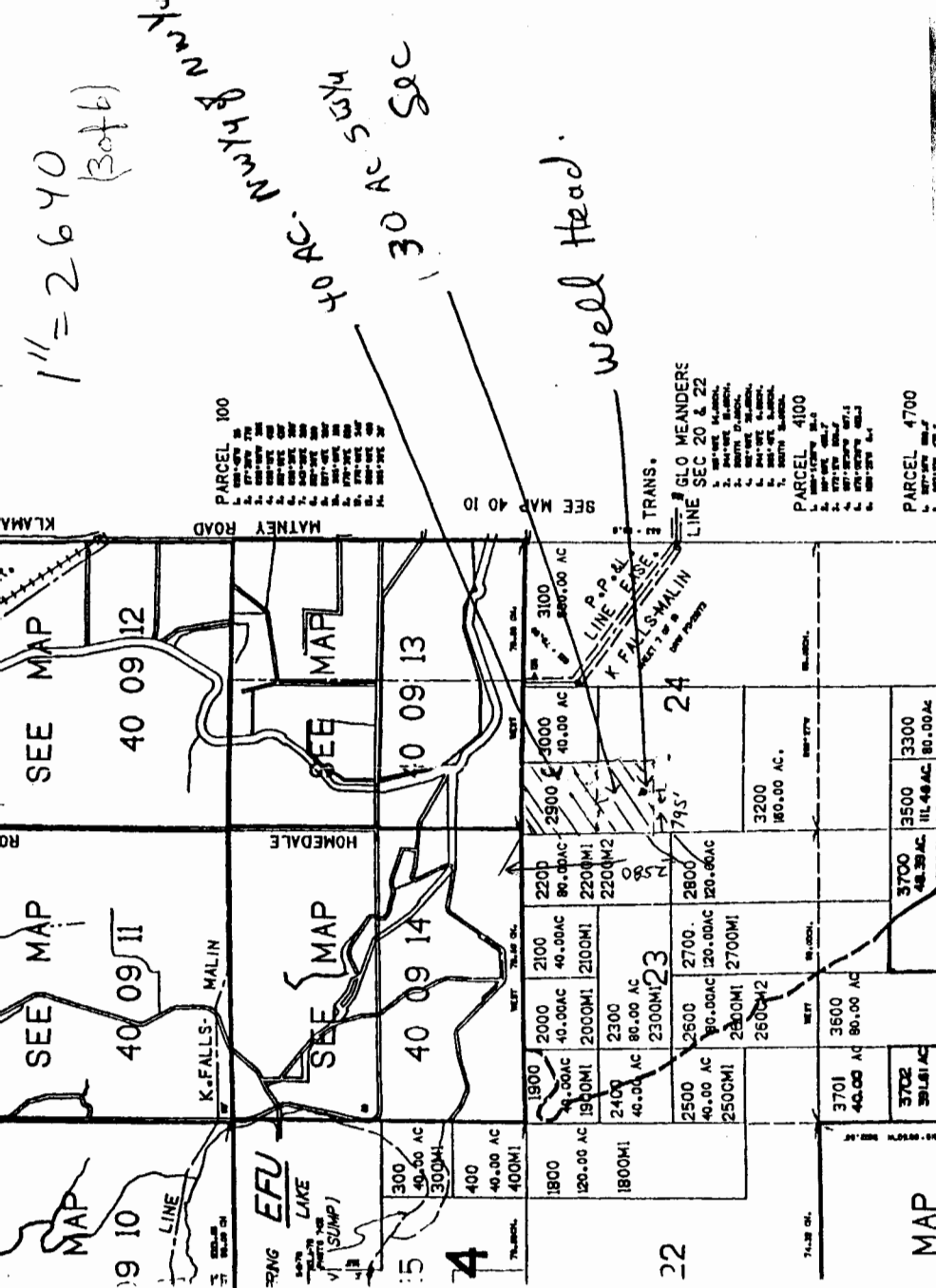
RECEIVED
FEB 10 2004
WATER RESOURCES DEPT.
SALEM, OREGON

N ↑

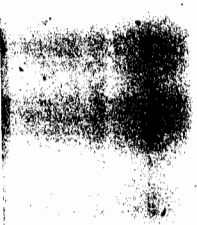
1" = 2640'

Application G-16186

1" = 2640' (Bofb)
Township R9N
County W. M. T. Co. Oregon
30 AC Sec



19 10 40 09 10 SEE MAP	40 09 11 40 09 11 SEE MAP	40 09 12 40 09 12 SEE MAP	40 09 13 40 09 13 SEE MAP	40 09 14 40 09 14 SEE MAP	23 23 2300M ² 2300M ²	24 24 2400M ² 2400M ²
1800 1800M ¹ 120.00 AC 40.00 AC 300M ¹	1900 1900M ¹ 120.00 AC 40.00 AC 300M ¹	2000 2000M ¹ 120.00 AC 40.00 AC 300M ¹	2100 2100M ¹ 120.00 AC 40.00 AC 300M ¹	2200 2200M ¹ 120.00 AC 40.00 AC 300M ¹	2500 2500M ¹ 120.00 AC 40.00 AC 300M ¹	2600 2600M ¹ 120.00 AC 40.00 AC 300M ¹
3702 3702M ¹ 120.00 AC 40.00 AC 300M ¹	3701 3701M ¹ 120.00 AC 40.00 AC 300M ¹	3500 3500M ¹ 120.00 AC 40.00 AC 300M ¹	3300 3300M ¹ 120.00 AC 40.00 AC 300M ¹	3700 3700M ¹ 120.00 AC 40.00 AC 300M ¹	3500 3500M ¹ 120.00 AC 40.00 AC 300M ¹	3300 3300M ¹ 120.00 AC 40.00 AC 300M ¹



SECTION 18 T.40S. R.10E. W.M.
KLAMATH COUNTY

(4 of 6)

Nw 1/4 of NW 1/4

THIS MAP WAS PREPARED FOR
ASSESSMENT PURPOSE ONLY.

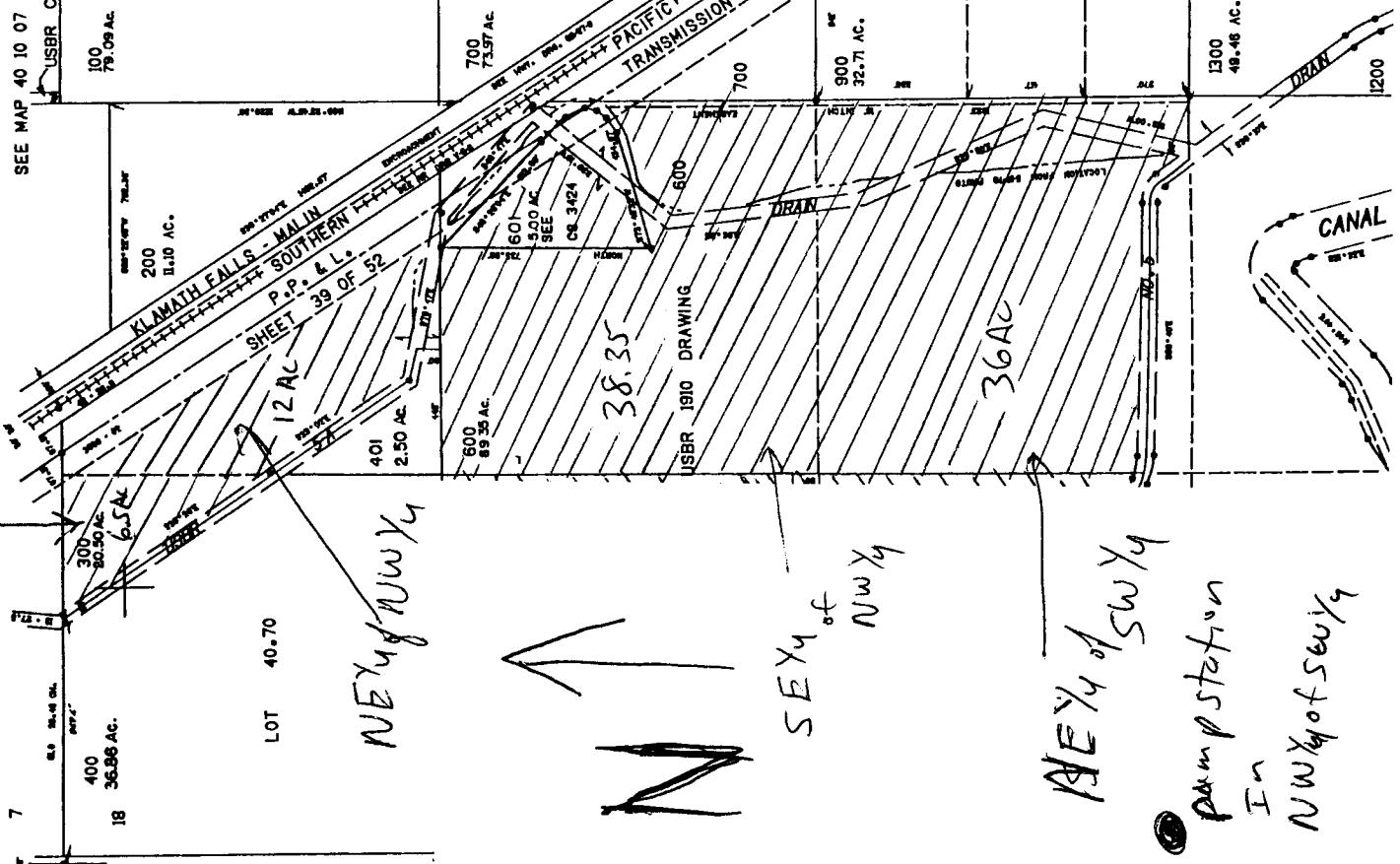
Application G-16186

1" = 400'

7
12
13
18
7
18
USBR C-7-B LAT.
SEE MAP 40 10 07
100 79.09 AC.
200 11.10 AC.
400 36.86 AC.
600 89.30 AC.
800 141.43 AC.
900 32.71 AC.
1000 48.46 AC.
1400 14.53 AC.

RECEIVED
FEB 10 2004
WATER RESOURCES DEPT
SALEM, OREGON

164



NE 1/4 of NW 1/4

SE 1/4 of NW 1/4

NE 1/4 of SW 1/4

Pump station
in
NW 1/4 of SW 1/4

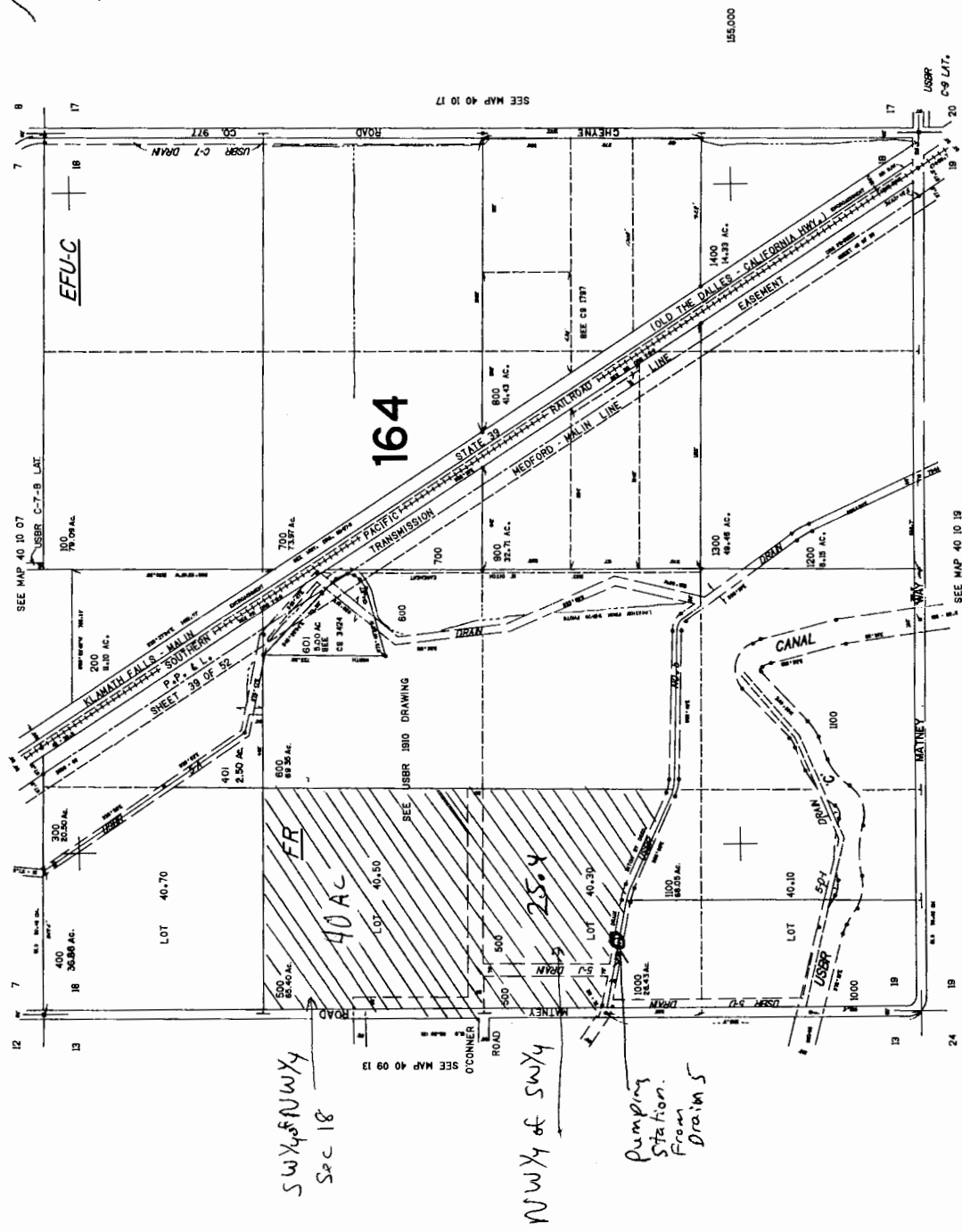
5 of 6

40 10 18

SECTION 18 T.40S. R.10E. W.M.
KLAMATH COUNTY

1"=400'

THIS MAP WAS PREPARED FOR
ASSESSMENT PURPOSE ONLY.



SW 1/4 NW 1/4
Sec 18

NW 1/4 of SW 1/4

Pumping
Station
From
Drains

RECEIVED

FEB 10 2004

WATER RESOURCES DEPT
SALEM, OREGON

40 10 18

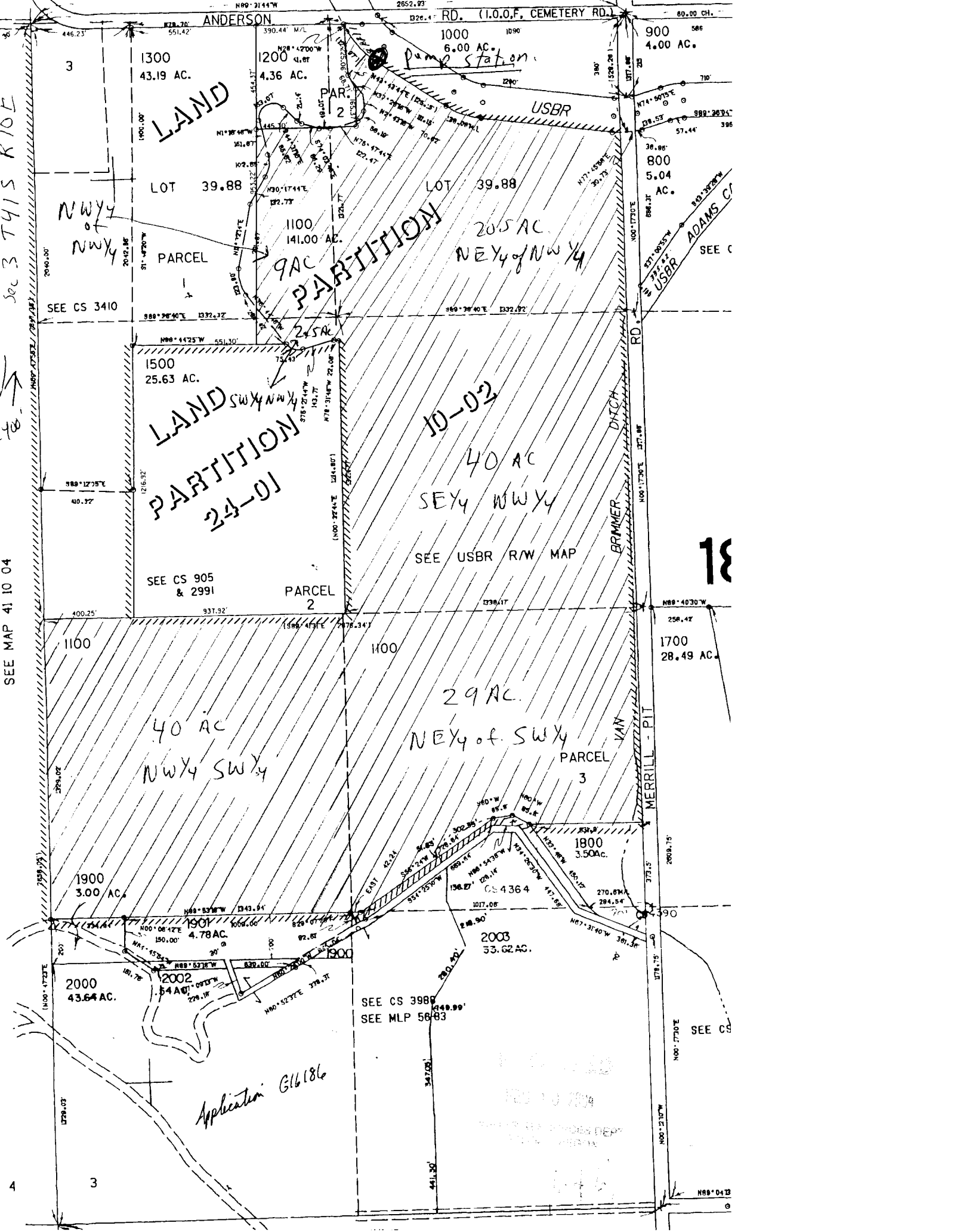
1676.000

Sec 3 T41S R10E

40

SEE MAP 41 10 04

4



Application G16186

SEE CS 3988
SEE MLP 5683

10-02

LAND SW $\frac{1}{4}$ NW $\frac{1}{4}$
PARTITION
24-01

LAND
PARTITION

40 AC
SE $\frac{1}{4}$ NW $\frac{1}{4}$
SEE USBR R/W MAP

40 AC
NW $\frac{1}{4}$ SW $\frac{1}{4}$

29 AC
NE $\frac{1}{4}$ of SW $\frac{1}{4}$

205 AC
NE $\frac{1}{4}$ of NW $\frac{1}{4}$

800
5.04 AC.
SEE C

1800
3.50 AC.

2003
53.62 AC.

2000
43.64 AC.

1901
4.78 AC.

1900
3.00 AC.

1100
40 AC

1700
28.49 AC.

1500
25.63 AC.

1200
4.36 AC.

1300
43.19 AC.

1000
6.00 AC.

900
4.00 AC.

1000
141.00 AC.

1100
141.00 AC.

1200
4.36 AC.

1300
43.19 AC.

1400
43.64 AC.

1500
25.63 AC.

1600
40 AC

1700
28.49 AC.

1800
3.50 AC.

1900
3.00 AC.

2000
43.64 AC.

2001
4.78 AC.

2002
54.00 AC.

2003
53.62 AC.

2004
4.78 AC.

2005
4.78 AC.

2006
4.78 AC.

2007
4.78 AC.

2008
4.78 AC.

2009
4.78 AC.

2010
4.78 AC.

2011
4.78 AC.

2012
4.78 AC.

2013
4.78 AC.

2014
4.78 AC.

2015
4.78 AC.

2016
4.78 AC.

2017
4.78 AC.

2018
4.78 AC.

2019
4.78 AC.

2020
4.78 AC.

2021
4.78 AC.

2022
4.78 AC.

2023
4.78 AC.

2024
4.78 AC.

2025
4.78 AC.

2026
4.78 AC.

2027
4.78 AC.

2028
4.78 AC.

2029
4.78 AC.

2030
4.78 AC.

2031
4.78 AC.

2032
4.78 AC.

2033
4.78 AC.

2034
4.78 AC.

2035
4.78 AC.

2036
4.78 AC.

2037
4.78 AC.

2038
4.78 AC.

2039
4.78 AC.

2040
4.78 AC.

2041
4.78 AC.

2042
4.78 AC.

2043
4.78 AC.

2044
4.78 AC.

2045
4.78 AC.

2046
4.78 AC.

2047
4.78 AC.

2048
4.78 AC.

2049
4.78 AC.

2050
4.78 AC.

2051
4.78 AC.

2052
4.78 AC.

2053
4.78 AC.

2054
4.78 AC.

2055
4.78 AC.

2056
4.78 AC.

2057
4.78 AC.

2058
4.78 AC.

2059
4.78 AC.

2060
4.78 AC.

2061
4.78 AC.

2062
4.78 AC.

2063
4.78 AC.

2064
4.78 AC.

2065
4.78 AC.

2066
4.78 AC.

2067
4.78 AC.

2068
4.78 AC.

2069
4.78 AC.

2070
4.78 AC.

2071
4.78 AC.

2072
4.78 AC.

2073
4.78 AC.

2074
4.78 AC.

2075
4.78 AC.

2076
4.78 AC.

2077
4.78 AC.

2078
4.78 AC.

2079
4.78 AC.

2080
4.78 AC.

2081
4.78 AC.

2082
4.78 AC.

2083
4.78 AC.

2084
4.78 AC.

2085
4.78 AC.

2086
4.78 AC.

2087
4.78 AC.

2088
4.78 AC.

2089
4.78 AC.

2090
4.78 AC.

2091
4.78 AC.

2092
4.78 AC.

2093
4.78 AC.

2094
4.78 AC.

2095
4.78 AC.

2096
4.78 AC.

2097
4.78 AC.

2098
4.78 AC.

2099
4.78 AC.

2100
4.78 AC.

2101
4.78 AC.

2102
4.78 AC.

2103
4.78 AC.

2104
4.78 AC.

2105
4.78 AC.

2106
4.78 AC.

2107
4.78 AC.

2108
4.78 AC.

2109
4.78 AC.

2110
4.78 AC.

2111
4.78 AC.

2112
4.78 AC.

2113
4.78 AC.

2114
4.78 AC.

2115
4.78 AC.

2116
4.78 AC.

2117
4.78 AC.

2118
4.78 AC.

2119
4.78 AC.

2120
4.78 AC.

2121
4.78 AC.

2122
4.78 AC.

2123
4.78 AC.

2124
4.78 AC.

2125
4.78 AC.

2126
4.78 AC.

2127
4.78 AC.

2128
4.78 AC.

2129
4.78 AC.

2130
4.78 AC.

2131
4.78 AC.

2132
4.78 AC.

2133
4.78 AC.

2134
4.78 AC.

2135
4.78 AC.

2136
4.78 AC.

2137
4.78 AC.

2138
4.78 AC.

2139
4.78 AC.

2140
4.78 AC.

2141
4.78 AC.

2142
4.78 AC.

2143
4.78 AC.

2144
4.78 AC.

2145
4.78 AC.

2146
4.78 AC.

2147
4.78 AC.

2148
4.78 AC.

2149
4.78 AC.

2150
4.78 AC.

2151
4.78 AC.

2152
4.78 AC.

2153
4.78 AC.

2154
4.78 AC.

2155
4.78 AC.

2156
4.78 AC.

2157
4.78 AC.

2158
4.78 AC.

2159
4.78 AC.

2160
4.78 AC.

2161
4.78 AC.

2162
4.78 AC.

2163
4.78 AC.